



Product & Service Guide





CONTENTS



3

INTRODUCTION



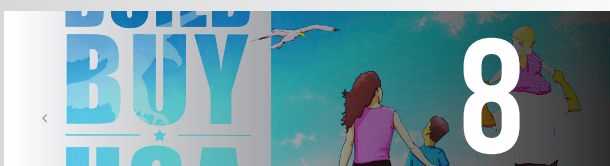
4

WHERE TO FIND UNION-MADE GOODS



6

HOW TO READ A VIN



8

BUILD BUY USA



9

REGION 1



21

REGION 1A



29

REGION 1D



39

REGION 2B



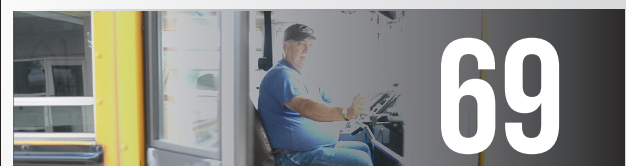
51

REGION 4



62

REGION 5



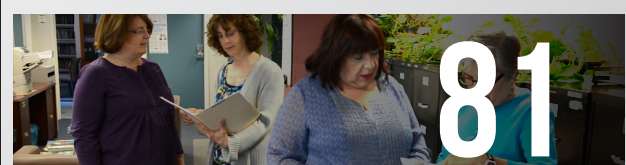
69

REGION 8



75

REGION 9



81

REGION 9A



94

CONSUMER AVAILABLE PRODUCTS

INTRODUCTION

Every dollar is a vote. When we spend our hard-earned dollars on union-made and USA-made goods, we vote for a strong labor movement and a thriving national economy. We show solidarity every time we support goods and services produced by our hardworking sisters and brothers.

This guide celebrates the excellence of UAW members. You may browse the products and services provided by UAW members in each region. There is also a section where you can review consumer available products by category. We hope you make the choice to support our UAW members by spending your money on products and services they make possible.

Finding union-made products can be difficult because few items are labeled “union-made.” However, this guide provides you with a list of tools for locating UAW-made goods. We encourage you to sign-up for updates through UAWire, by going to uaw.org/action. We strive to keep our members informed of union products and their availability in the community; which includes updating our members on product manufacturing that has moved out of the United States and product boycotts endorsed by the AFL-CIO.

We encourage UAW local unions to host the UAW Education Department’s workshop, “The Ethical Consumer”. This course is designed to teach the concept of ethical consumerism, which is the power of our wallets and how our spending affects union jobs.

We hope you find this guide useful. Please join us in making our spending decisions count!

Excellence



Pride



WHERE TO BUY UNION-MADE GOODS?



RESOURCES

UNION-MADE

-  WWW.UAW.ORG
-  WWW.LABOR411.COM
-  WWW.GETITUNION.COM
-  WWW.UNIONPLUS.ORG/BUY-UNION-MADE
-  WWW.BUILDBUYUSA.ORG

MADE IN U.S.A

-  WWW.ALLUSACLOTHING.COM
-  WWW.AMERICANSWORKING.COM
-  WWW.MADEINUSAFOREVER.COM
-  [GO4 USA \(APP\)](#)
-  [BUYCOTT \(APP\)](#)
-  [MADE IN? \(APP\)](#)
-  [MADE IN USA \(APP\)](#)

Tell a friend to...

Today 9:21PM

Text **candy** to **22555**
for union-made candy

Today 9:21PM

Text **airline** to **22555**
for union-friendly airlines

Today 9:21PM

Text **cars** to **22555**
for union-made cars

Today 9:21PM

Text **hotel** to **22555**
for union-friendly hotels

Today 9:21PM

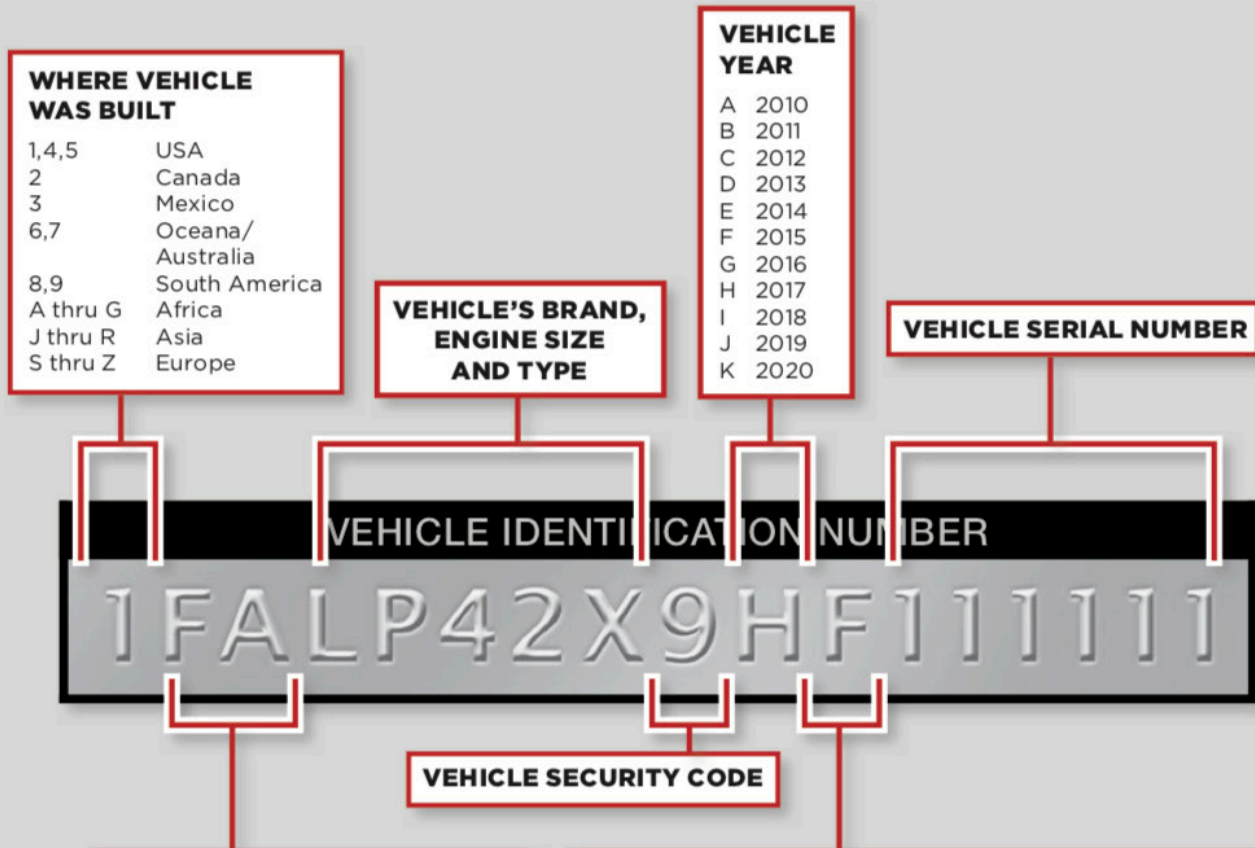
Text **beer** to **22555**
for union-made beer

Today 9:21PM

Text **toys** to **22555**
for union-made wine

Finding Union-Made goods and
services is just a TEXT AWAY!

What's in a VIN?



VEHICLE MANUFACTURER

B,C or D	FCA USA
Starts with F	Ford
Starts with G	General Motors
C4	Jeep
L	Lincoln

PLANT THAT ASSEMBLED THE VEHICLE

CODES FOR FORD PLANTS

D	Ford Ohio Assembly Plant, Avon Lake, OH
E	Ford Kentucky Truck Assembly, Louisville, KY
F	Ford Dearborn Truck Assembly, Dearborn, MI
G	Ford Chicago Assembly Plant, Chicago, IL
K	Ford Kansas City Assembly Plant, Claycomo, MO
L	Ford Michigan Assembly Plant, Warren, MI
U	Ford Louisville Assembly Plant, Louisville, KY
W	Ford Wayne Stamping and Assembly Plant, Wayne, MI
5	Ford Flat Rock Assembly, Flat Rock, MI
B	Ford Oakville Assembly Plant, Oakville, Ontario, Canada

CODES FOR GM PLANTS

0	GM Lansing Grand River Assembly Plant, Lansing, MI
1	GM Wentzville Assembly, Wentzville, MO
2	GM Spring Hill Assembly Plant, Spring Hill, TN
4	GM Orion Assembly Plant, Lake Orion, MI
5	GM Bowling Green Assembly Plant, Bowling Green, KY
7	GM Lordstown Assembly Plant, Lordstown, OH
F	GM Fairfax Assembly Plant, Fairfax, KS
F	GM Flint Truck Assembly Plant, Flint, MI
J	GM Lansing Delta Township Assembly Plant, Lansing, MI
R	GM Arlington Assembly Plant, Arlington, TX
U	GM Detroit/Hamtramck Assembly, Detroit, MI
Z	GM Fort Wayne Truck Assembly Plant, Fort Wayne, IN
6	GM CAMI Automotive Assembly, Ingersol, Ontario, Canada
1	GM Oshawa Car Assembly Plant, Oshawa, Ontario, Canada

CODES FOR FCA USA PLANTS

C	FCA USA Jefferson North Assembly Plant, Detroit, MI
D	FCA USA Belvidere Assembly Plant, Belvidere, IL
N	FCA USA Sterling Heights Assembly Plant, Sterling Heights, MI
S	FCA USA Warren Truck Assembly Plant, Warren, MI
L/W	FCA USA Toledo North Assembly Plant, Toledo, OH
H	FCA Canada Brampton, Assembly Plant, Brampton, Ontario, Canada
R	FCA Canada Windsor Assembly Plant, Windsor, Ontario, Canada

Vehicle Recommendations

One way to tell if you are buying a UAW-made vehicle is to consult the list on the opposite page. If it has an asterisk, you need to do a little detective work. The vehicle sticker will tell you the final assembly plant as well as the Vehicle Identification Number (VIN).

The UAW recommends buying certain Canadian-built vehicles because they are built by our brothers and sisters in Canada's Unifor union and have significant UAW-made content that supports the jobs of our brothers and sisters in transmission, foundry, stamping and parts plants. Those are listed under Unifor.

And just because a vehicle VIN starts with a 1, 2, 4, or 5, doesn't automatically mean it's a recommended buy. Vehicles not on the list that start with these numerals are made in nonunion plants.

2018 UAW Union-Built Vehicle Guide

BUY USA • BUY UNION • BUY USA • BUY UNION • BUY USA • BUY UNION • BUY USA • BUY UNION

UAW CARS

Buick LaCrosse
Cadillac ATS
Cadillac CTS
Cadillac CT6
(excluding plug-in hybrid)
Chevrolet Bolt (electric)
Chevrolet Camaro
Chevrolet Corvette
Chevrolet Cruze*
Chevrolet Cruze (diesel)
Chevrolet Impala
Chevrolet Malibu
Chevrolet Sonic*
Chevrolet Volt (electric)
Ford Focus
Ford Focus (electric)
Ford Mustang
Ford Taurus
Lincoln Continental

UAW TRUCKS

Chevrolet Colorado
Chevrolet Silverado**
Ford F Series
GMC Canyon
GMC Sierra**
Ram 1500***

UAW SUVs/CUVs

Buick Enclave
Cadillac Escalade
Cadillac Escalade ESV
Cadillac Escalade Hybrid
Cadillac XT4
Cadillac XT5
Chevrolet Suburban
Chevrolet Tahoe
Chevrolet Tahoe (police)
Chevrolet Tahoe (special service)
Chevrolet Traverse
Dodge Durango
Ford Escape
Ford Expedition
Ford Explorer
GMC Acadia
GMC Yukon
GMC Yukon Hybrid
GMC Yukon XL
Jeep Cherokee
Jeep Grand Cherokee
Jeep Wrangler
Lincoln MKC
Lincoln Navigator

UAW VANS

Chevrolet Express
Ford Transit
GMC Savana

UNIFOR CARS

Cadillac XTS
Chevrolet Impala
Chevrolet Impala (police)
Chrysler 300
Dodge Challenger
Dodge Charger

UNIFOR SUVs/CUVs

Chevrolet Equinox*
Ford Edge
Ford Flex
Lincoln MKT
Lincoln MKX

UNIFOR TRUCKS

Chevrolet Silverado Double Cab
GMC Sierra Double Cab

UNIFOR VANS

Chrysler Pacifica
Dodge Grand Caravan

These vehicles are made in the United States or Canada by members of the UAW and Canada's Unifor union, formerly the Canadian Auto Workers (CAW). Because of the integration of United States and Canadian vehicle production, all the vehicles listed made in Canada include significant UAW-made content and support the jobs of UAW members.

However, vehicles marked with a single asterisk (*) are also produced in Mexico. All Cruze hatchbacks and some sedans are manufactured in Mexico. The diesel version is manufactured in the United States by UAW members. The Chevrolet Equinox is manufactured in Canada by Unifor members and also in Mexico. The light-duty and heavy-duty Chevrolet Silverado and GMC Sierra pickup trucks, marked with a double asterisk (**), are manufactured in the United States and other countries. The light-duty Ram 1500, marked with a triple asterisk (***), is manufactured in the United States and Mexico, while all heavy-duty Ram models are built in Mexico. When purchasing one of the above vehicles, it's important to check the Vehicle Identification Number (VIN). A VIN beginning with "1" or "4" or "5" identifies a U.S.-made vehicle; a "2" identifies a Canadian-made vehicle; a 3 identifies a vehicle made in Mexico.

Not all vehicles made in the United States or Canada are built by union-represented workers. Vehicles not listed here, even if produced in the United States or Canada, are not union made.



BUILD BUY USA

IT'S ABOUT OUR FUTURE

BuildBuyUSA is about our future. It's about the big picture of bringing back the well-paying and sustainable manufacturing jobs that supported all of us for generations. It's also about the small choices we make every day. Through the power of our wallets, we can reward employers who respect worker rights and the environment, who hire from the community and give back to those who help us all grow. We can have the future we want, but it won't happen through grandstanding or flag waving. By working together, our actions and choices can change the future.



IT'S THAT SIMPLE. WILL YOU JOIN US?



facebook.com/buildbuyusa



twitter.com/buildbuyusa



instagram.com/buildbuyusa



www.buildbuyusa.org



info@buildbuyusa.org



REGION 1

Region 1 covers the following counties in Michigan: Huron, Lapeer, Macomb, Oakland, St. Clair, Sanilac, Tuscola and part of Wayne (including Detroit) and Canadian UAW local unions.

Region	Local	Unit	Corporation	Product or Service	Category
1	7	1	FCA Jefferson North Assembly	Chrysler/Jeep Assembly	Automotive
1	22	3	General Motors	Assembly of Volt, Impala, LaCrosse, CT-6	Automotive
1	22	4	Textron Incorporated	Gas Tank	Automotive
1	22	5	General Motors	Nurses	Automotive
1	22	7	Aramark Corporation	Janitorial Services	Janitorial
1	22	11	Hydrochem LLC	Clean Paint Booths	Automotive
1	44	1	Mueller Industries Inc.	Brass Stock	Automotive/ Home Products/ Tools/Manufacturing
1	51	1	FCA Mack Engine	3.6,3.2, and 3.0 Engines (supply most FCA vehicles in the U.S. and Canada	Automotive
1	51	2	Caravan Facilities Management	Janitorial Service for Mack Engine	Janitorial
1	51	3	Caravan Facilities Management	Janitorial Service for Jefferson North Assembly	Janitorial
1	51	4	Hydro- Chem Filter Corporation	Janitorial Service for Jefferson North Assembly Paint Shop	Janitorial
1	140	4	FCA Warren Assenbly	Assembly of Dodge Trucks	Automotive
1	140	8	Caravan Facilities Management	Janitorial Service	Janitorial
1	155	4	Hydra-Lock Corporation	Machining/Assembly	Automotive
1	155	130	Essex Brass Corp	Stamping	Automotive
1	155	143	Altra Industrial Motion, Inc.		
1	155	166	Hercules Machine Tool & Die Company	Tool & Die	Automotive
1	155	246	Nor-Cote Incorporated	Tanks	Defense
1	155	418	American Axle & Manufacturing	Forging/ Machining	Automotive
1	155	448	Inalfa Roof Systems Inc.	Sun Roofs	Automotive
1	155	482	Fargowear	Metal Fabrication	Automotive
1	155	532	Invo-Spline	Machining	
1	155	536	Thyssen Krupp	Line Assembly	Automotive
1	155	550	Mayco International, Inc.	Injection Molding/Instrument Panel Assembly	Automotive
1	155	564	Detroit Flame Hardening	Heat Treat	Automotive

Region	Local	Unit	Corporation	Product or Service	Category
1	155	574	Sodecia North America	Skilled Trades	Automotive
1	155	575	Sodecia North America	Tool & Die	Automotive
1	155	580	Mount Clemens Dial-A-Ride	Door to Door Bus Service	Transportation
1	155	581	Fenner Plc	Seals	Automotive
1	155	583	American Axle & Manufacturing	Axle	Automotive
1	155	584	Global Titanium	Heat Treat	Automotive
1	155	585	Avis Industrial Corporation	Tube Frame	Automotive, Other
1	155	592	Phoenix Wire Cloth	Welding	Automotive
1	155	609	La Rosa Refrigeration & Equipment	Refrigeration	Food Service
1	155	614	Miscellaneous		
1	155	619	Cranks Catering Services	Food Service	Food Service
1	155	621	Schroth Enterprises, Inc.		
1	155	630	Comer Holdings	Seating	Automotive
1	155	633	Sterling Insurance Agency	Insurance Sales	Other
1	155	636	Flex-N-Gate Corp	Bumpers/Stamping	Automotive
1	155	646	Spectra LLC	Bus Chassis	Automotive
1	155	648	Dmr Advertising	Clothing, Banners, Mugs	Printing/Apparel-Promotional Goods
1	155	651	Tower International	Stamping	Automotive
1	155	652	Bosal International	Assembly	Automotive
1	155	656	Arch Global Precision LLC	Machining	Other Manufacturing
1	155	657	Bokum Tool Company	Machining	Automotive, Other
1	155	659	Milton Manufacturing, Inc.	Machining/Welding	Automotive, Defense
1	155	661	Weldaloy Products Company	Forging/ Machining	Aerospace
1	155	666	U S Manufacturing Corporation	Rear Axle Shafts	Automotive
1	155	668	American Axle & Manufacturing	Forge/Heat Treat	Automotive
1	155	669	PSA Peugeot Citroen SA	Interior/Exterior	Automotive

Region	Local	Unit	Corporation	Product or Service	Category
1	155	670	Avi Foodsystems Inc.		
1	155	671	PSA Peugeot Citroen SA	Interior Molding	Automotive
1	155	673	Android Industries	Tire Wheel Assembly	Automotive
1	155	675	PSA Peugeot Citroen SA	Seating	Automotive
1	155	676	Mike's Legends Catering	Food Service	Food Service
1	155	677	Oakland County Democratic Party	Municipal	Public Sector
1	155	678	Magna International Incorporated	Seating	Automotive
1	155	680	Just In Time, LLC	Apparel	Apparel
1	155	681	Oakland Stamping LLC	Stamping/Assembly	Automotive, Other
1	155	682	United Service Group	Temp Service	Temp Agency
1	155	683	Comer Holdings	Automotive Seating	Automotive
1	155	684	Eat Catering Company LLC	Food	Food Service
1	155	685	Inalfa Roof Systems Incorporated	Sun Roofs	Automotive
1	155	686	Magna International Incorporated	Cosmetic Assembly - Front End	Automotive
1	160	1	General Motors	Vehicle Pre-Production: Stamping/Welding/Assembly/Testing/ Design and Build Pre-Production Vehicles	Automotive
1	160	25	Aramark Corporation	Janitorial Services	Janitorial
1	160	26	Caravan Facilities Management	Janitorial Services	Janitorial
1	212	16	FCA	Logistics	Trucking, Logistics, Warehousing
1	212	17	Canyon Oaks Propeller, Inc.	Propellers	Aerospace
1	212	48	Sodecia North America	Dyes	Automotive
1	212	50	FCA	Engineering Office & Clerical	Automotive
1	212	52	FCA	Launch Vehicles	Automotive
1	212	62	FCA	Dyes	Automotive
1	212	69	FCA	Prototype Cars	Automotive
1	212	71	Gb Sales & Service Inc.	Fork Lift Repair	Other
1	212	76	Crown Group Inc.	Paint Axles	Automotive

Region	Local	Unit	Corporation	Product or Service	Category
1	212	77	Detroit Police Investigators	Police Investigators	Public Sector
1	212	79	Caravan Facilities Management	Janitorial Services	Janitorial
1	212	80	Caravan Facilities Management	Janitorial Services	Janitorial
1	212	81	Caravan Facilities Management	Janitorial Services	Janitorial
1	212	82	Atier		
1	212	82	Atier LLC		
1	212	807	KC Integrated Services LLC	Sequencing	Automotive
1	228	1	Ford Motor Company	Axles for the F250-F150-Mustang Ford	Automotive
1	228	4	Royal Oak Ford Sales Inc.	Car Dealership	Dealership
1	228	5	Devon Industrial Group	Janitorial Services	Janitorial
1	228	6	Union Sorters Of America	Sorters	Automotive
1	228	7	The Local Credit Union	Service	Financial
1	246	1	Becton Dickinson & Company	Pharmaceutical	Pharmaceutical
1	251	2	Wabtec Corp	Iron Castings	Railway
1	251	56	Onbelay Investment Corporation	Painting/Assembly	Automotive
1	251	57	March of Dimes Canada	Personal Support Worker	Healthcare
1	251	63	Ro-Matt International Incorporated	Equipment Manufacturing	Other
1	251	64	2532612 Ontario Inc.	Plastic Recycling	Higher Ed
1	251	68	Schepens (E R) Electrical Ltd	Mechanical/Electrical	Other
1	251	69	Toyoda Gosei Co Ltd	Weather Stripping	Automotive
1	251	72	Flex-N-Gate Corp	Sequencing/Assembly	Automotive
1	251	76	Yanfeng Automotive Trim Systems Co. Ltd	Molding/Assembly	Automotive
1	251	81	Compass Group	Cafeteria	Food Service
1	251	83	Ef Education First	Teaching	Education
1	369	3	Sodecia North America	Auto Parts	Automotive
1	375	40	FCA	Auto Parts	Automotive

Region	Local	Unit	Corporation	Product or Service	Category
1	375	65	Black River Mfg	CNC	Automotive
1	375	70	Mapal DR Kress KG	Die Cut Tools	Automotive
1	375	71	Caravan Facilities Management	Janitors	Janitorial
1	400	2	Ford Motor Company	Parts Storage/Prototype	Automotive
1	400	5	Ford Motor Company	Hourly MPG	Automotive
1	400	6	Ford Motor Company	Seating	Automotive
1	400	8	Ford Motor Company	Engine	Automotive
1	400	12	Visteon Corporation		Automotive
1	400	18	Ford Motor Company	Salary MPG	Automotive
1	400	20	EQR2	Embroidery and Screen Printing	Apparel
1	400	24	Wes Pro Fleet Services, Inc.	Switchers	Automotive
1	400	27	Learning Design, Inc.	Writing/Printing Tech Manuals	
1	400	29	Adient Plc	Seats for Ram/F150	Automotive
1	400	31	Utica Community Schools	Clerical	Public Sector
1	400	32	Yanfeng Automotive Trim Systems Co. Ltd	Instrument Panels	Automotive
1	400	33	Utica Community Schools	Maintenance	Janitorial
1	400	34	Abm Industries Incorporated	Janitorial Services	Janitorial
1	400	36	Union Sorters Of America	Sorting/Inspection	Automotive
1	412	12	General Dynamics Corporation	Engineers	Defense
1	412	12	General Dynamics Corporation		Defense
1	412	14	General Dynamics Corporation	Skilled Trades	Defense
1	412	20	FCA	Engineers	Automotive
1	412	24	FCA	Engineers	Automotive
1	412	26	FCA	Engineers	Automotive
1	412	30	FCA	Engineers	Automotive
1	412	38	FCA	Engineers	Automotive
1	412	46	FCA	Engineers	Automotive
1	412	48	FCA	Engineers	Automotive
1	412	50	FCA	Engineers	Automotive
1	412	52	FCA	Engineers	Automotive
1	412	58	FCA	Engineers	Automotive
1	412	62	FCA	Engineers	Automotive

Region	Local	Unit	Corporation	Product or Service	Category
1	412	72	FCA	Engineers	Automotive
1	412	72	FCA		Automotive
1	412	90	United Way Worldwide	Community Service	Nonprofit/Advocacy
1	412	103	FCA		Automotive
1	412	110	Compass Group	Catering	Food Service
1	412	114	FCA	Engineers	Automotive
1	412	116	FHC Health Systems	Service	Healthcare
1	412	118	Health Management Systems	Service	Healthcare
1	412	120	FHC Health Systems	Service	Healthcare
1	412	508	McLaren Health Care Corporation	LPN'S, Telemetry Techs, Surgical Techs, Medical Techs, X-Ray Techs	Healthcare
1	412	509	Daimler Trucks N.A.	Engineers	Heavy Truck
1	412	521	Caravan Facilities Management	Janitorial Services	Janitorial
1	412	522	Warren Municipal Federal Credit Union	Bank	Financial
1	412	524	Terra Contracting	Office	Other
1	412	808	Industrial Mainte- nance Solutions LLC	Office	Other
1	412	809	Macomb County	Civic	Public Sector
1	412	810	Clinton Township	Civic	Public Sector
1	412	811	City of Warren	Civic	Public Sector
1	412	812	36th District Court		Public Sector
1	412	813	Macomb County	Civic	Public Sector
1	412	816	Macomb County	Civic	Public Sector
1	412	817	Macomb County	Civic	Public Sector
1	412	818	City of St. Clair Shores		Public Sector
1	412	819	Clinton Township	Civic	Public Sector
1	412	820	Romeo District Library	Civic	Public Sector
1	412	821	City of Warren	Civic	Public Sector
1	412	823	Washington Township	Civic	Public Sector
1	412	824	Romeo District Library	Civic	Public Sector
1	412	825	Washington Township	Civic	Public Sector
1	412	826	Washington Township	Civic	Public Sector
1	412	827	Macomb County	Civic	Public Sector
1	412	827	Macomb County	Civic	Public Sector
1	412	828	Macomb County	Civic	Public Sector

Region	Local	Unit	Corporation	Product or Service	Category
1	412	828	Macomb County	Civic	Public Sector
1	412	829	City of Detroit	Legal Assistants	Public Sector
1	653	6	General Motors	Stamping	Automotive
1	653	10	General Motors	Warehouse	Automotive
1	653	15	General Motors	Testing Facility	Automotive
1	653	19	Eurest Services	Janitorial Service	Janitorial
1	653	20	Eurest Services	Janitorial Service	Janitorial
1	653	21	Eurest Services	Janitorial Service	Janitorial
1	653	22	Sbm Site Services	Janitorial Service	Janitorial
1	653	23	Challenge Mfg Company	Stamping	Automotive
1	771	17	Repair Industries of Michigan	Shipping Racks/Containers	Automotive
1	771	26	Meier Screw Products & Mfg Co	Fasteners	
1	771	58	Rubber Enterprises, Inc.	Suspension Components	Automotive
1	771	66	Induction Services Inc.	Metal Heat Treating	Other Manufacturing
1	771	69	Super Steel Treating Company	Metal Heat Treating	Automotive
1	771	73	Fitzgerald Finishing Company	Metal Coatings	Manufacturing
1	771	80	Stanley Black & Decker, Inc.	Fasteners/Brackets	Automotive
1	771	82	American National Red Cross	MUA - Blood Processing	Nonprofit/Advocacy
1	771	85	American National Red Cross	DRD - Blood Processing	Nonprofit/Advocacy
1	771	86	American National Red Cross	Lab Tech - Blood Processing	Nonprofit/Advocacy
1	771	92	Hackett Brass Foundry	Steel Foundry	Other
1	771	96	Conway Detroit Corporation		
1	771	104	Howard Finishing LLC	Metal Coatings	Automotive
1	771	106	Hyde Spring & Wire Company	Springs	Automotive
1	771	109	Flex-N-Gate Corp	Stamping	Automotive
1	771	112	Quality Chaser Company	Machine Tooling	Automotive
1	771	114	Ingersoll-Rand Company Limited	Overhead Cranes	Other
1	771	116	Sms Group Gmbh	Metal Coatings/Engraving	Other

Region	Local	Unit	Corporation	Product or Service	Category
1	771	117	Thoreson-Mccosh Inc.	Hoppers	Other
1	771	120	Tank Truck Service & Sales Inc.	Truck Tanks	Defense
1	771	124	John Johnson Co	Tarps/Coverings	Textiles
1	771	125	Anderson Cook Inc.	Powertrain	Automotive
1	771	126	Maclean-Fogg Company	Fasteners/Brackets	Automotive
1	771	135	International Auto Components	Head Liners	Automotive
1	771	137	Aro Sa	Welding/Soldering	
1	771	139	Dana Corporation	Drive Shafts	Automotive
1	771	141	Dana Corporation	Transmissions/Oil Coolers	Automotive
1	771	142	Unique Expressions	Promotional Items	Printing/Apparel-Promotional Goods
1	771	143	Suburban Moblty Auth Reg Trans	Bus Maintenance	Transportation
1	812	1	Sensient Technologies Corp	Food Flavoring	Food Manufacturing
1	869	1	FCA	Office	Automotive
1	869	2	Caravan Facilities Management	Janitorial Services	Janitorial
1	889	8	FCA	Office	Automotive
1	889	12	FCA	Office	Automotive
1	889	16	FCA	Office	Automotive
1	889	22	FCA	Office	Automotive
1	889	30	FCA	Office	Automotive
1	889	32	FCA	Office	Automotive
1	889	34	FCA	Office	Automotive
1	889	42	FCA	Office	Automotive
1	889	52	FCA	Office	Automotive
1	889	69	Delta Dental Plan of Michigan	Service	Healthcare
1	889	78	The Detroit Medical Center	Telephone Operators	Healthcare
1	889	84	Delta Dental Plan of Michigan	Service	Healthcare
1	889	92	FCA	Office	Automotive
1	889	98	FCA	Office	Automotive
1	889	103	FCA	Office	Automotive
1	889	105	FCA	Office	Automotive

Region	Local	Unit	Corporation	Product or Service	Category
1	889	108	Marriott International Inc.	Hotel Service	Lodging
1	889	118	Macomb County	Township Offices	Public Sector
1	889	121	Macomb County	Probate Court	Public Sector
1	889	122	Macomb County	Animal Control	Public Sector
1	889	123	Washington Township	Office	Public Sector
1	889	131	Ferndale Public Schools	Service	Public Sector
1	889	133	Staywell Health Management	Service	Healthcare
1	889	142	Benefit Resources LLC	Mortgage Company	Other
1	889	143	Macomb County	Office	Public Sector
1	889	145	Ciena Health Care Management Inc.	Service	Healthcare
1	909	1	General Motors	Transmissions for Acadia, Impala, Cadillac XTS	Automotive
1	909	2	Eurest Services	Janitorial Services	Janitorial
1	961	1	FCA Marysville Axle	Axles for RAM, Grand Cherokee, V-6 Challengers, V-6 Chargers, and 2000 parts for GM Holden (low volume)	Automotive
1	1149	1	Intertape Polymer Group	Adhesive Tape	Packaging
1	1248	1	FCA	Automotive Parts	Automotive
1	1248	2	General Dynamics Corporation	Janitorial Services	Defense
1	1248	5	Caravan Facilities Management	Janitorial Services	Janitorial
1	1248	6	Penske Corporation	Food	Trucking, Logistics, Warehousing
1	1264	1	FCA Sterling Heights Stamping	Stamping vehicle panels (doors, lift gates, hoods, etc.) for Toledo Assembly, Jefferson North Assembly, and Sterling Heights Assembly	Automotive
1	1264	2	Caravan Facilities Management	Janitorial Service	Janitorial
1	1700	1	FCA Sterling Heights Assembly	RAM Assembly	Automotive
1	1700	2	Caravan Facilities Management	Janitorial Service	Janitorial

Region	Local	Unit	Corporation	Product or Service	Category
1	1700	3	Tri-Dim Filter Corporation		
1	1777	3	Shelby Township	Government	Public Sector
1	1781	1	Blue Cross Blue Shield of Michigan	Service	Healthcare
1	1781	2	Blue Care Network of Michigan	Service	Healthcare
1	1796	3	Wayne County Community College	Administration	Higher Ed
1	1869	1	General Motors	Engineering	Automotive
1	1979	1	Wayne State University	Professional Administration	Higher Ed
1	2071	1	Wayne State University	Staff	Higher Ed
1	2200	11	Detroit Public Library	Pool Librarian	Public Sector
1	2200	12	Detroit Public Library	APL Librarian	Public Sector
1	2200	13	STU Facilities Maintenance	Janitorial at Detroit Public Library	Public Sector/ Janitorial
1	2211	1	City of Detroit	Legal	Public Sector
1	2280	1	Ford Motor Company	Transmissions	Automotive
1	2280	2	Devon Industrial Group	Janitorial Services	Janitorial
1	2280	3	Bay Logistics	Sorters/Inspectors	Automotive
1	2280	4	Quality Plus Containment	Sorters/Inspectors	Automotive
1	2280	5	Azar Inspection Service LLC	Sorters/Inspectors	Automotive
1	2280	6	Mitsubishi Chemical Holdings Corp.	Polymers	Automotive
1	2411	1	Macomb County Community College	Educators	Higher Ed
1	2500	1	Blue Cross Blue Shield of Michigan	Service	Healthcare
1	5960	1	General Motors	Assembly of Chevy Sonic	Automotive
1	5960	6	Voith Ag	Sub Assembly	Automotive
1	5960	7	Team Solutions	Part Stamping	Automotive
1	5960	8	General Motors	Assembly of Chevy Bolt	Automotive
1	5960	10	Jones Lang Lasalle	Janitorial Services	Janitorial
1	5960	12	Integrity Lift Services	Maintain Forklifts	Other
1	5960	13	Sodecia North America	Sub Assembly	Automotive
1	5960	14	Vani Quality Quest Inc.	Sub Assembly	Automotive

Region	Local	Unit	Corporation	Product or Service	Category
1	5960	15	Lear Corporation	Seating	Automotive
1	7777	1	MGM Grand Detroit	Table Games, Cage Cashier, Slot Tech, VIP, Banker	Gaming
1	7777	2	Motor City Casino	Slot Tech, Banners, Cage, Count Room	Gaming
1	7777	3	Greektown Casino	Slot Tech, Banners, Cage, Count Room	Gaming
1	9699	2	Anrod Screen Cylinder Co	Screen Filters	Automotive, Other
1	9699	6	Walbro	Fuel Systems and Tanks/Lawn and Garden	Home Products/ Tools Manufacturing
1	9699	8	Huron, Inc.	Auto Tube	Automotive
1	9699	14	Threaded Products Company	Household Plumbing Fitting	Home Products/ Tools Manufacturing
1	9699	16	Jay & Kay Manufacturing	Boat Arches	Marine
1	9699	18	Trans Tube Inc.	Tube Bending	Defense
1	9699	24	Transign, LLC	Bus Signage	Automotive
1	9699	30	Barron Industries Inc.	Foundry	Automotive, Defense
1	9699	44	Unique Fabricating Inc	Foam Parts	Automotive
1	9699	52	American Axle & Manufacturing	Forging	Automotive
1	9699	62	Ryder System Inc.	Sequencing for Chrysler	Automotive
1	9699	63	International Auto Components	Headliner	Automotive
1	9699	66	Huron Medical Center	Hospital	Healthcare
1	9699	67	Primo Craft	Screen Printing	Apparel
1	9699	69	Cher Marketing	Sales	Other
1	9699	70	PHC	Mental Healthcare	Healthcare
1	9699	71	PHC	Mental Healthcare	Healthcare
1	9699	75	U S Farathane Corporation	Auto Injection Molding	Automotive
1	9699	77	International Auto Components	Auto Carpets	Automotive
1	9699	79	Ti Automotive	Fuel Pumps	Automotive
1	9699	83	Anderson Cook Inc.	Machining	Automotive
1	9699	84	Sant Partners	Hospital	Healthcare
1	9699	85	Amore Digital	Screen Printing	Apparel



REGION 1A

Most of Wayne County, Mich., (including part of Detroit), Monroe County and Washtenaw County, and extends to the Ohio border

Region	Local	Unit	Corporation	Product or Service	Category
1A	38	8	SKF	Ball & Roller Bearing Mfg.	Automotive
1A	38	44	Dexter Fastener Technologies	Automotive Supplier - Bolts, Screws	Automotive
1A	38	47	Ecology Center	Environmental	Nonprofit
1A	38	48	Blue Care Network of Michigan	Phone Customer Care	Healthcare
1A	163	4	Daimler Trucks N.A.	DD5 Truck Engine - Short Haul Pickup Trucks, DD8, DD13,DD15, DD16 - Heavy Duty Diesel Engine, Turbo Charger Captive, Machine Parts, Blocks, Heads, Liners, Bearing Cap ConRods, Consolidation Center - Shipping component parts NAFTA	Automotive
1A	163	10	Oakwood Group	Signatures Audio Covers, Plastic and Stainless Steel/Overhead Systems, Plastic Safety Systems, Energy Absorbers, Audio Covers	Automotive
1A	163	18	General Motors Corporation	High Feature V6 Engines & 10-Speed Transmissions	Automotive
1A	163	23	Continental Services	Food Service provider and catering for Detroit Diesel	Automotive
1A	163	24	Detroit Diesel	DD5 Truck Engine - Short Haul Pickup Trucks, DD8, DD13,DD15, DD16 - Heavy Duty Diesel Engine, Turbo Charger Captive, Maching Parts, Blocks, Heads, Liners, Bearing Cap ConRods, Consolidation Center - Shipping component parts NAFTA	Automotive
1A	163	25	Oakwood Group	Signatures Audio Covers, Plastic and Stainless Steel/Overhead Systems, Plastic Safety Systems, Energy Absorbers, Audio Covers	Automotive
1A	163	26	Oakwood Group	Signatures Audio Covers, Plastic and Stainless Steel/Overhead Systems Plastic Safety Systems, Energy Absorbers, Audio Covers	Automotive
1A	163	27	Oakwood Group	Signatures Audio Covers, Plastic and Stainless Steel/Overhead Systems Plastic Safety Systems, Energy Absorbers, Audio Covers	Automotive
1A	163	29	The Lakeland Center	In & Out Patient Rehabilitation, Traumatic Brain Injury Recovery	Healthcare

Region	Local	Unit	Corporation	Product or Service	Category
1A	163	32	Jones Lang Lasalle	Fix Forklifts and Trucks	Automotive
1A	174	58	Federal Screw Works	Auto Fasteners, Nuts & Bolts	Automotive
1A	174	208	Red Spot Paint & Varnish Co	Paint & Varnish Manufacturer	Automotive
1A	174	216	Danaher Corporation - Kerr Mfg	Dental & Hygiene Products	Healthcare
1A	174	224	C&J Steel Processing & Storage	Flat Rolled Steel Processing	Metals
1A	174	251	Aztec Manufacturing Corp	Stampings	Automotive
1A	174	252	Woodbridge Group	Foam seating	Automotive
1A	174	253	Quaker Chemical Corp	Machining Oil & Chemicals	Other Manufacturing
1A	174	272	Air Conditioning Products Company	Dampers/Wall Shutters	Home Products/ Tools Manufacturing
1A	174	274	Commercial Steel Treating Corp	Heat Treat	Automotive
1A	174	282	Dundee Products Co	Welded Steel Tubes	Automotive
1A	174	285	Whitesell Corporation	Metal Fasteners	Automotive
1A	174	286	Hancock Enterprises	Aluminum Gutters & Downspouts	Home Products/ Tools Manufacturing
1A	174	287	Metro Machine Works	Machine Aircraft Components	Aerospace
1A	174	289	Moeller Manufacturing Company	Machine Aircraft Components/ Dies, Tools, Punches and Batons	Aerospace
1A	174	290	Moeller Manufacturing Company	Machine Aircraft Components/ Dies, Tools, Punches and Batons	Aerospace
1A	174	292	Multiple Employers	Miscellaneous Employees	Other
1A	174	293	General Motors Corporation	Auto Parts to Dealers	Automotive
1A	174	299	Diversified Tooling Group - Superior Cam	Stamping & Laser	Automotive
1A	174	305	Ciena Healthcare Mgt Inc - Fountain View Monroe	Nursing Home	Healthcare
1A	174	306	Promedica - Mercy Memorial	Nursing Home	Healthcare
1A	174	308	US Park	Airport shuttle	Other
1A	174	310	Masco Corporation - Brasscraft	Packaging, Plumbing Parts, & Supplies	Home Products/ Tools Manufacturing
1A	174	315	Maclean-Fogg Company	Various Types of Nuts	Automotive
1A	174	319	Eftec North America LLC	Car Adhesive/Under Coating	Automotive
1A	174	321	ABC Mailing Company	Mailing of Union Materials	Other
1A	174	328	Impressions	Shirts, Jackets and Promotional Items	Printing/Promotional Goods/Apparel
1A	174	331	Recycle Ann Arbor	Recycling	Nonprofit
1A	174	332	Foundations Preschool Of Washtenaw County	Preschool	Nonprofit
1A	174	335	Michigan Mechanical Svc Inc.	Mechanical Contractors	Other

Region	Local	Unit	Corporation	Product or Service	Category
1A	174	345	General Motors Corporation	Auto Parts to Dealers	Automotive
1A	174	347	City of Monroe	Non-Profit Food Bank	Public Sector
1A	174	358	Psa Peugeot Citroen SA - Faurecia	Exhaust Systems	Automotive
1A	174	359	Lear Corporation	Interior Auto Parts	Automotive
1A	174	362	Grupo Antolin North America	Headliners	Automotive
1A	174	366	Ryder System Inc.	Warehouse & Logistics	Trucking, Logistics, Warehousing
1A	174	372	Plastomer Corp	Foam Products	Automotive
1A	174	375	Atlas Copco Ab	Pneumatic Tools	Other Manufacturing
1A	174	376	Eaton Steel Bar Company - Hercules	Roll Steel	Metals
1A	174	378	Alpha Stamping Company	Brackets, Bolts & Fasteners	Automotive
1A	174	382	Quality Metalcraft Inc.	Prototype, Production & Assemblies	Automotive
1A	174	385	Country Fresh	All Dairy Products, including Milk and Butter	Food Manufacturing
1A	174	391	Mitsui & Company Ltd - Steel Tec.	Split Coils	Metals
1A	174	393	Assembly Technologies Intl	Small Electric Components	Other Manufacturing
1A	174	395	Materials Processing Inc.	Painting & Coating, Warehousing & Logistics	Defense
1A	174	396	Tower International	Auto Frames	Automotive
1A	174	402	Jl International Incorporated - Dst	Auto Prototype & Services	Automotive
1A	174	413	Staywell Health Management	Health Services	Healthcare
1A	174	417	JSP Corp	Various Plastic Products	Automotive
1A	174	419	Voss Industries	Various Steel Services	Metals
1A	174	420	Arch Global Precision LLC - Hi-Vol Products	Cold Formed and Precision Machined Parts	Automotive
1A	174	421	Danaher Corporation - Metrex	Dental Apparatus	Healthcare
1A	174	422	Jones Lang Lasalle- Eurest	Janitorial	Janitorial
1A	174	429	Wellington Industries	Metal Stamping & Assemblies	Automotive
1A	174	430	General Motors Corporation	Battery Assembly	Automotive
1A	174	432	City of Inkster	Supervisor	Public Sector
1A	174	435	Dearborn Board Of Education	Child Care	Child Care
1A	174	436	City of Wyandotte	Cafeteria Services	Public Sector

Region	Local	Unit	Corporation	Product or Service	Category
1A	174	437	City of Woodhaven	Firefighters	Public Sector
1A	174	438	City of Westland	City Services	Public Sector
1A	174	439	1St Quality	Sorting	Automotive
1A	182	1	Ford Motor Company	Transmissions	Automotive
1A	245	2	Ford Motor Company	New & Experimental Product Development	Automotive
1A	245	5	The Henry Ford	Museum Maintenance	Museum
1A	245	6	Ford Motor Company	Skilled Trades /Warehouse	Automotive
1A	245	7	Caravan Facilities Management	Janitorial	Automotive
1A	245	8	International Quality Control	Sorting	Automotive
1A	372	2	FCA	Engine Manufacturing Facility	Automotive
1A	372	3	Caravan Facilities Management	Janitorial	Automotive
1A	372	5	Intratech Services	Gauge Management for Facilities	Automotive
1A	372	6	Devon Industrial Group	Building Maintenance	Janitorial
1A	387	1	Ford Motor Company	Stamping	Automotive
1A	387	3	Ford Motor Company	Crankshafts	Automotive
1A	387	5	Devon Industrial Group	Janitorial	Janitorial
1A	600	2	Ford Motor Company	Assembles the F-150	Automotive
1A	600	4	Ford Motor Company	2.0 GDI Engine	Automotive
1A	600	10	Ford Motor Company	Manufactures Doors, Fenders, Tailgates, and Hoods for DTP, Kentucky Truck, Kansas City Ass. And MAP	Automotive
1A	600	12	Ford Motor Company	Manufactures Subassemblies, Roof Rails & Pillars, Chemical and Heat Treated Finished Metals. Rear Axle, Foil and Shock, Front Brake and Tire Wheel Assembly	Automotive
1A	600	16	Ford Motor Company	Facility & Project Maintenance & Install	Automotive
1A	600	18	A K Steel Corporation	Iron & Steel Mills - Steel Processing	Automotive
1A	600	20	Ford Motor Company	Parts Distribution Center for New Model Programs	Automotive
1A	600	28	Ford Motor Company	Toolmaking, Die Making, Die Setting & Repair	Automotive
1A	600	38	Ford Motor Company	Nursing Care to Members	Healthcare

Region	Local	Unit	Corporation	Product or Service	Category
1A	600	41	Medilodge Group Inc	Nursing Home	Healthcare
1A	600	42	Henry Ford Health System	Healthcare	Healthcare
1A	600	43	Arc Of The United States	Counseling	Healthcare
1A	600	47	Midwestern Vision Center	Vision Plans	Healthcare
1A	600	50	Lutheran Child & Family Service - New Directions	Family Services	Nonprofit
1A	600	55	Henry Ford Health System	Labor Unit	Healthcare
1A	600	56	Heritage Optical Center Inc.	Vision Plans	Healthcare
1A	600	57	Midwest Health Center P C	Healthcare	Healthcare
1A	600	58	Midwestern Dental Associates	Dental Plan	Healthcare
1A	600	60	Henry Ford Health System	Registered Nurses	Healthcare
1A	600	61	Henry Ford Health System	Marketing	Healthcare
1A	600	66	Mobis North America LLC	Suspensions & Frames FCC Chrysler Jeep	Automotive
1A	600	67	Henry Ford Health System	Clerical	Healthcare
1A	600	68	Adient Plc- Bridgewater	Seats	Automotive
1A	600	70	Comprehensive Logistics Co. Inc.	Logistical Co., - Ford	Automotive
1A	600	71	St. Claire Inc.	Book Publishers	Publications/Books/Book Stores
1A	600	72	Ryder System Inc.	Warehousing	Trucking, Logistics, Warehousing
1A	600	76	Yanfeng Automotive Trim Systems Co. Ltd	Plastic Injection Molding	Automotive
1A	600	79	Golden Dental Plans	Dental Plan	Healthcare
1A	600	80	Judicial Attorneys Association	Court Processing Attorneys	Legal
1A	600	81	The Idea Group	Vendor	Other
1A	600	84	Leadec	Janitorial	Automotive
1A	600	85	Hydrochem LLC	Janitorial Services Rouge/Manages Paint Facilities DTP	Automotive
1A	600	86	CEVA Logistics U.S. Inc.	Trucking	Trucking, Logistics, Warehousing
1A	600	87	Plastic Omnimum	Gas Tanks for Big 3	Automotive
1A	600	88	Detroit Manufacturing Systems LLC	Console Assm. and Sequencing for Auto/Manufactures Pullies and Inner Rings - Whirlpool	Automotive
1A	600	89	Tri-Am Transport LLC	Freight Transportation for AK Steel	Trucking, Logistics, Warehousing
1A	600	90	JA Quality Assurance Group	Support Services	Healthcare
1A	600	91	The Industrial Athlete	Physical, Occupational & Speech Therapists	Healthcare

Region	Local	Unit	Corporation	Product or Service	Category
1A	600	92	Amerasorting LLC	Sorting & Inspection	Automotive
1A	600	93	Union Sorters of America	Sorting & Inspection	Automotive
1A	600	94	International Quality Control	Sorting & Inspection	Automotive
1A	600	95	Piston Automotive LLC	Braking Assembly, Coolant System Assembly & Interior Assembly (Dashboard Consoles, Seating) Big 3	Automotive
1A	600	96	Rouge Fire Rescue	Fire Protection	Public Sector
1A	600	97	Ryder Trucking - Magna	Distribution, Trucking	Trucking, Logistics, Warehousing
1A	600	99	Aris Industries	Consulting Services	Other
1A	600	100	Sakthi Group	Builds Knuckles (Brake Systems), Castings, and Gas Pumps for Big 3 & Volkswagen	Automotive
1A	600	101	Estwo Promotions, Inc.	Commercial Screen Printing	Printing/Apparel Promotional Goods
1A	723	1	Ford Motor Company	Warehouse Parts, Sort & Resort	Automotive
1A	723	2	Metalurgica Gerdau Sa	Hot Rolled and Cold Finished Carbon and Alloy Steel Bars	Metals
1A	723	3	Frenchtown Township	Firefighters & EMS	Public Sector
1A	723	6	Yanfeng Automotive Trim Systems Co. Ltd	Sub Assembly Injection Molding/ Vac-Form Molding/ Assembly & Injection Molding	Automotive
1A	723	7	FCA	2.0 & 2.4 Shark Engine/ WGE World Gas Engine	Automotive
1A	723	12	Neapco LLC	Drive Shaft Assembly	Automotive
1A	723	13	Devon Industrial Group	Maintenance Operations	Janitorial
1A	723	14	Caravan Facilities Management	Janitorial	Automotive
1A	723	15	Monroe County	Professional Public Employees	Public Sector
1A	845	1	Ford Motor Company	Vehicle Parts Manufacturing	Automotive
1A	845	2	Ford Motor Company	Vehicle Parts Manufacturing	Automotive
1A	845	3	Devon Industrial Group	Janitorial	Janitorial
1A	845	4	Elesco Industries LLC - Devon	Janitorial	Janitorial
1A	845	6	Detroit Thermal Systems LLC	Parts for Ford	Automotive
1A	878	4	Tenneco Automotive Inc	Research & Design Automotive Shocks	Automotive
1A	892	1	Faurecia - Ford Motor Co.	Vehicle Parts Manufacturing	Automotive
1A	892	7	Union Sorters Of America	Sort Parts	Automotive

Region	Local	Unit	Corporation	Product or Service	Category
1A	898	1	Ford Motor Company	DTP/MAP Sequencing and Coil, Throttle and Fuel Pump, Carbon Canisters, Batteries, Transmission Oil Pump and Transportation	Automotive
1A	900	1	Ford Motor Company	Assembly Plant for Focus and C Max	Automotive
1A	900	3	Leadac	Janitorial	Janitorial
1A	900	6	Leadac	Janitorial	Janitorial
1A	900	9	Leadac	Janitorial	Janitorial
1A	900	11	Sava Senior Care	Nurses	Healthcare
1A	900	12	Union Sorters Of America	Re-work to verify stock is cleared for Assembly	Automotive
1A	900	13	Bay Logistics	Sorters	Automotive
1A	900	14	Healthcare Services Group Inc.	Janitorial	Janitorial
1A	900	15	Lean Process Improvement	Sorters	Automotive
1A	900	16	Azar Inspection Service LLC	Sorters	Automotive
1A	900	19	International Quality Control	Sort Parts	Automotive
1A	931	1	Ford Motor Company	Ford Prototypes prior to going to production	Automotive
1A	1284	1	FCA	FCA - Research & Design	Automotive
1A	1970	1	Ford Motor Company	Product Engineering Designer (CAD)/Chemist and Material Engineering	Automotive
1A	1970	2	Ford Motor Company	Product Engineering Designer (CAD)/Chemist and Material Engineering	Automotive
1A	1970	3	Carlyle Group	Basic Inorganic Chemical Mfg.	Other Manufacturing
1A	1975	3	Eastern Michigan University	Clerical	Higher Education
1A	1976	1	Eastern Michigan University	Professional/Technical	Higher Education
1A	3000	1	Ford Motor Company	Assembly Plant for Ford Mustang	Automotive
1A	3000	5	Kirchhoff Automotive	Automotive Frame Stamping	Automotive
1A	3000	11	ABM Industries Incorporated	Janitorial	Janitorial
1A	3000	12	International Quality Control	Sorters	Automotive
1A	3000	13	Union Sorters Of America	Part Supplier/Part Sorting	Automotive
1A	3000	14	Dakkota Integrated Systems LLC	Warehouse/Sub-Assembly for FRAP	Automotive
1A	3000	15	Rush Trucking	Trucking	Automotive
1A	6000	1	State of Michigan	State Workers	Public Sector
1A	6000	2	State of Michigan	State Workers	Public Sector



REGION 1D

Covers UAW workers in Michigan's Upper Peninsula and the central, western and northern portions of the Lower Peninsula.

Region	Local	Unit	Corporation	Product or Service	Category
1D	4	2	Mueller Industries Inc.	Brass Extrusions	Other Manufacturing
1D	4	4	Extruded Aluminum Corp	Aluminum Extrusions	Automotive
1D	8	1	Federal Mogul Corporation	Piston Rings, Axle Shins	Automotive
1D	19	20	Light Metals Corporation	Aluminum Extrusions	Other Manufacturing
1D	19	48	Leon Plastics	Injection Molding	Automotive
1D	19	68	Corvac Composites	Plastic Injection Molding	Automotive
1D	19	70	T-Shirts Plus	Clothing and Embroidery	Apparel
1D	19	74	Grand Rapids Township	Public Service - Firefighters	Public Sector
1D	19	75	Yanfeng Automotive Trim Systems Co. Ltd	Plastic Injection Molding	Automotive
1D	19	76	Rapid Engineering Inc.	Commercial Heaters	Other Manufacturing
1D	21	1	Cone Drive Operations Inc.	Gears	Industrial
1D	62	9	Kellogg Crankshaft Co	Product	Automotive
1D	62	12	Modern Machine Tool Co	Product	Automotive
1D	62	66	Jason Incorporated	Build Seats For ATVs, Lawn Tractors, Snowmobiles, Light Commercial Ag.	Off Road Vehicles
1D	62	97	Camshaft Machine Co LLC	Camshafts	Automotive
1D	67	3	Anchor Danley	Cut Steel	Metals
1D	113	1	L3 Technologies Inc.	Engines, Transmissions, Suspensions, and Turret-Drive Systems for Combat Vehicles	Defense
1D	135	1	American Seating Company	Seats for Mass Transit	Other Manufacturing
1D	138	1	Hastings Manufacturing and Speed Pro	Piston Rings	Automotive
1D	167	1	Robert Bosch Fuel Systems	Diesel Train Injector Etc.	Automotive
1D	167	2	GMCH	GM Components	Automotive
1D	167	3	North American Fuel Systems Remanufacturing	Remanufactured Fuel Injectors	Automotive
1D	167	4	Caravan Knight	Janitorial	Janitorial
1D	284	1	SAF- Holland	Produce Fifth-Wheel and Pintle-Hook Components For Commercial Vehicles	Trucking, Logistics, Warehousing
1D	330	1	General Electric		Defense
1D	334	1	Blissfield Manufacturing Co	Oil and Transmission Coolers	Agricultural
1D	362	1	General Motors Corporation	Produce Cam Shafts for GM Powertrain	Automotive
1D	362	2	Caravan Facilities Management	Janitorial Services for the GM Bay City Manuf.	Janitorial
1D	362	3	McLaren Homecare	Homecare	Healthcare
1D	362	4	McLaren Homecare	Homecare	Healthcare

Region	Local	Unit	Corporation	Product or Service	Category
1D	362	6	McLaren Healthcare Corp	Healthcare Tech	Healthcare
1D	362	7	Midmichigan Health	Healthcare Tech	Healthcare
1D	362	8	Bangor Charter Township	Township Employees	Public Sector
1D	362	9	Bangor Charter Township Volunteer Firefighters	Volunteer Firefighters	Public Sector
1D	373	1	American Axle & Manufacturing	Production of Powertrain Components, including: Valve Bodies, Clutch Housings, Solenoid Bodies and More	Automotive
1D	383	1	Bosch (Robert) GMBH Bosch Braking	Power-Boost Brakes	Heavy Truck
1D	388	1	Cooper-Standard Automotive	Manufacture Window and Door Seals for GM, Ford and Chrysler	Automotive
1D	389	6	Fluid Routing Solutions	Gas-Tube Filler	Automotive
1D	413	1	Flanders Industries	Wicker Furniture	Furniture Production
1D	455	10	Amsted Industries	Clutch Stampings	Automotive
1D	455	16	Saginaw Bearing Co	Bearings	Automotive
1D	455	34	KUKA AG	Transmission Test Equipment	Automotive
1D	455	38	Johnson Carbide Products	Carbide Tooling	Automotive
1D	455	41	Severance Tool Ind	Carbide Tooling	Automotive
1D	455	43	Amsted Industries	Clutch Plate Assemblies	Automotive
1D	455	47	Alfe Heat Treating	Heat Treat For GM	Automotive
1D	455	48	Saginaw County	County Paraprofessional Employees	Public Sector
1D	455	49	Saginaw County	County Professional Employees	Public Sector
1D	455	50	Saginaw County	County Managerial Employees	Public Sector
1D	467	1	ZF Friedrichshafen AG	Automotive	Automotive
1D	467	2	Wellspring Lutheran Services	Nursing Home	Healthcare
1D	467	3	Medilodge Group Inc.	Nursing Home	Healthcare
1D	475	1	Aeroquip	Custom Air and Fluid-Con- veyance Products for Commercial and Military Aerospace Systems	Defense
1D	503	1	International Auto Components	Auto Interiors	Automotive
1D	504	1	Lefere Forge & Machine Co	Forging	Other Manufacturing

Region	Local	Unit	Corporation	Product or Service	Category
1D	539	1	Textron Automotive	Camshafts and Cast-Iron Engine Components	Automotive
1D	566	1	Jones L E Company	Valve Seat Inserts	Automotive
1D	598	1	General Motors Corporation	Heavy-Duty Chevrolet, GMC Sierra Crew and Regular Cab Trucks, Light-Duty Chevrolet Silverado Crew and Regular Cab Trucks	Automotive
1D	598	7	Hamtramck Energy Services LLC	Third-Party Expertise in Managing and Staffing Powerhouses and Wastewater Treatment Facilities	Energy
1D	598	9	Aramark Corporation	Sanitation, Maintenance, Truck Repair	Janitorial
1D	602	1	General Motors Corporation	Enclave, Traverse	Automotive
1D	602	2	Jones Lang Lasalle	Sanitation and Maintenance	Janitorial
1D	649	1	Rosback F P Co	Book Binding	Publications
1D	651	1	General Motors Corporation	Supply Chain, Logistics, Warehousing and Distribution	Trucking, Logistics, Warehousing
1D	651	2	Jones Lang Lasalle	Janitorial	Janitorial
1D	651	3	Aramark Corporation	Sanitation and Maintenance	Janitorial
1D	652	4	General Motors Corporation	ATS, CTS, Camero	Automotive
1D	652	5	Ryder System Inc.	Provides Kitting of Parts and Transportation of Parts to GM	Trucking, Logistics, Warehousing
1D	652	6	Android Industries	Sequences Dashboards and Consoles for GM Delta Assembly	Automotive
1D	652	7	Yanfeng Automotive Trim Systems Co. Ltd	Plastic Mold Injection	Automotive
1D	652	8	General Motors Corporation	Sequencer for GM Lansing	Automotive
1D	659	4	General Motors Corporation	1.4-Liter Engines for Chevrolet Cruze and Volt	Automotive
1D	659	8	General Motors Corporation	CCA Plant, GM Parts Warehouse	Automotive
1D	659	10	General Motors Corporation	Sheet Metal Stampings for 20 GM Facilities, approx. 740 Part Numbers	Automotive
1D	659	18	Automotive Component Carrier	Trucking Company	Trucking, Logistics Warehousing

Region	Local	Unit	Corporation	Product or Service	Category
1D	659	20	General Motors Corporation	Tool, Dies	Automotive
1D	659	21	Android Industries	Produces Brake Assemblies for GM Flint Truck Assembly and Other Automotive Suppliers	Automotive
1D	659	22	Logistics Services Inc.	Sequencing	Automotive
1D	659	26	Aramark Corporation	Service	Janitorial
1D	659	28	Jones Lang Lasalle	Provides Janitorial Services for GM Plant and Some Facilities Maintenance	Janitorial
1D	668	1	General Motors Corporation	GM Head and Block Casting and Machining	Automotive
1D	668	2	Caravan Facilities Management	Janitorial	Janitorial
1D	699	1	Pacific Century Motors Inc.	Steering Columns and Drive Line	Automotive
1D	708	12	Stokes Steel Treating	Provides Heat Treating for Oem and Other Suppliers	Automotive and Other Manufacturing
1D	708	48	Premiere Packaging Inc.	Bottle Cleaning Products, Car Waxes	Other Manufacturing
1D	708	52	Oil Chem	Recycle Oils and Compounds For Reuse	Automotive and Other Manufacturing
1D	708	53	Mid-State Plating Company	Chroming of Small Parts	Automotive
1D	708	63	Stat Emergency Medical Service	Provides Ambulance and Transportation Services in Genesee County and Saginaw County	Healthcare
1D	724	36	Huntsman International LLC	Chemicals	Aerospace, Automotive, Industrial Electrical
1D	724	50	Industrial Metal Products Corp	Machines	Automotive
1D	724	62	Delta Dental Plan of Michigan	Medical Billing	Healthcare
1D	724	74	Marubeni-Itochu Steel Inc.	Provides Steel Blanks for GM, Ford and Chrysler	Automotive
1D	724	77	Dimondale Nursing Care Facility	Cooks, Housekeeping, Aides, Nursing Assistants	Healthcare
1D	724	78	Dakkota Integrated Systems LLC	Sequencing of Headliners and Consoles For GM	Automotive
1D	724	79	Woodbridge Group	Sub Assemblies	Automotive
1D	724	80	Cadbury Schweppes	Dr. Pepper	Food Manufacturing

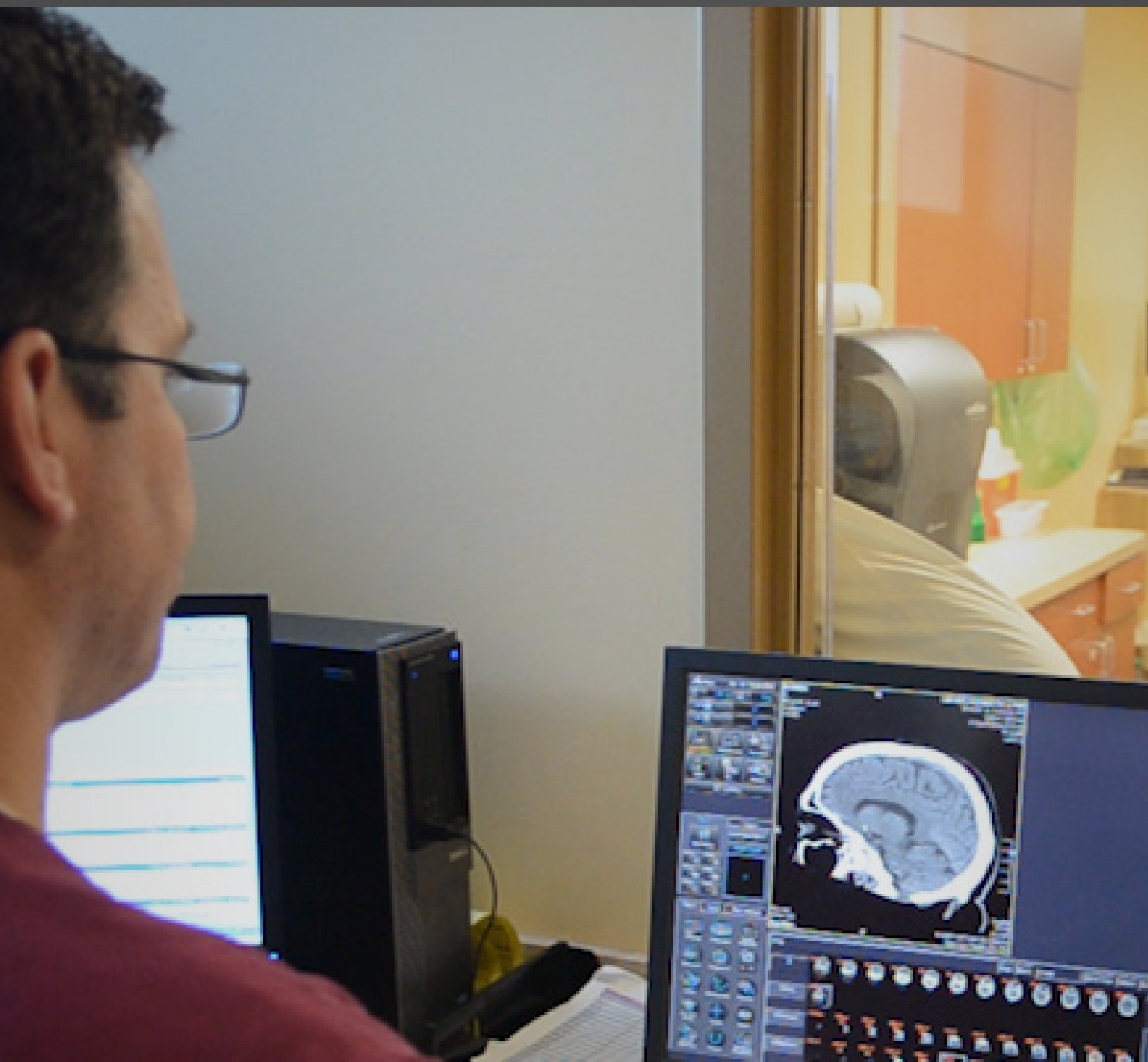
Region	Local	Unit	Corporation	Product or Service	Category
1D	724	81	Adient Plc	Seats	Automotive
1D	724	82	Detroit Technologies Inc.	Interiors	Automotive
1D	724	84	Jones Lang Lasalle	Sanitation	Automotive
1D	724	85	Jones Lang Lasalle	Sanitation	Automotive
1D	724	86	Jones Lang Lasalle	Maintenance	Automotive
1D	724	87	Kirchhoff Automotive	Metal Structure Parts	Automotive
1D	743	10	Allied Motion Technologies Inc.	DC Motors	Industrial
1D	743	25	Midwest Bus Corp	Bus Builders	Heavy Truck
1D	743	27	Terex Corporation	Power Screens	Other Manufacturing
1D	783	1	Pentwater Wire Products	Custom Wire Tubing and Metal Products	Other Manufacturing
1D	811	1	Harsco Track	Design and Manufacture Railway-Track-Maintenance Equipment	Other Manufacturing
1D	828	1	Dover Corp	Liquid & Gas Pumps	Other Manufacturing
1D	925	1	G.H.S. Corporation	Air Compressors	Industrial
1D	925	10	Custom Embroidery Plus	Embroidery	Apparel
1D	963	8	Ervin Industries	Industrial Metal Shot	Industrial
1D	963	30	C R Motor Sales	Auto Dealership	Auto Dealership/ Mechanics
1D	1002	1	Bradford White	Water Heaters	Home Products/Tools Manufacturing
1D	1134	2	Dura Automotive Systems Inc.	Lawnmower and Automotive Tube Frames	Automotive
1D	1158	1	Federal Mogul Corporation	Tool & Die Grinding Services	Automotive
1D	1176	2	Decker Manufacturing Corp	Nuts, Bolts	Other Manufacturing
1D	1223	1	Bronson Plating Company	Plating	Other Manufacturing
1D	1243	1	Howmet	Produce Super Alloy Airfoils for Aerospace Engines and Industrial Gas Turbines	Aerospace
1D	1279	2	L3 Technologies Inc.		Defense
1D	1294	19	Abrasive Materials LLC	Metal Shot, Ship Hull Cleaning and for Bridges	Other Manufacturing
1D	1294	21	Branch County	Secretarial	Public Sector
1D	1294	24	Dare Products Incorporated	Mfg. or Repackage	Agricultural
1D	1294	25	Kellogg Community College	Education	Public Sector

Region	Local	Unit	Corporation	Product or Service	Category
1D	1294	27	Calhoun County Road Commission	Admin Support	Public Sector
1D	1320	1	Harlo Corporation	Industrial Material Handlers	Agricultural
1D	1386	2	Togo Seisakusyo Corp	Springs and Clips	Automotive
1D	1402	1	Benteler Ag	Aluminum Extrusions	Automotive
1D	1403	4	Honeywell International	Motors and Actuators	Aerospace
1D	1433	1	AAR Corporation	Encampments	Defense
1D	1464	1	Great Lakes Castings	Gray Iron Castings	Automotive and Other Manufacturing
1D	1485	1	Dematic Corporation	High Speed Conveyor Systems	Other Manufacturing
1D	1586	1	Tubelite	Extruded Aluminum	Metals
1D	1666	1	Parker Hannifin Corp	Hydraulic Systems For Commercial, Military and Defense	Aerospace
1D	1703	1	SAF- Holland	Components and Suspensions for Commercial Vehicles	Trucking, Logistics, Warehousing
1D	1753	1	General Motors Corporation	CCA GM Parts Warehouse	Automotive
1D	1753	3	Jones Lang Lasalle	Provides Janitorial Services for GM CCA	Janitorial
1D	1811	1	General Motors Corporation	Nurses	Healthcare
1D	1811	4	Kettering University	Service	Higher Education
1D	1811	6	Michigan Eye Care Services LLC	Optometrist	Healthcare
1D	1811	7	Health Alliance Plan	Health Insurance	Healthcare
1D	1811	8	Health Alliance Plan	Health Insurance	Healthcare
1D	1811	15	General Optical	Optometrist	Healthcare
1D	1811	16	Hearing Mgmt. Systems LLC		Healthcare
1D	1811	18	SVS Vision	Vision Care & Eyewear Provider	Healthcare
1D	1811	21	Health Solutions Incorporated	Service	Healthcare
1D	1811	23	Hearing Mgmt. Systems LLC	Service	Healthcare
1D	1819	1	Lear Corporation	Manufactures Seat Frames for Chrysler	Automotive
1D	1950	1	Northern Michigan University	College Clerical Staff	Higher Education
1D	1972	1	JVIS USA, LLC	Auto Plastic Interiors	Automotive
1D	1974	1	Clare County	County Office Services	Public Sector
1D	1974	2	Clare County	County Supervision	Public Sector
1D	1974	3	17th District Probate Court	Court Support, Juvenile Probation Officers, Deputy Clerk	Public Sector

Region	Local	Unit	Corporation	Product or Service	Category
1D	1974	4	55th Circuit Court	Financials, Enforcement, Computer Operations	Public Sector
1D	1974	5	80th District Court	Deputy Clerk, Probation, Bookkeeping	Public Sector
1D	1974	6	Gladwin County	Maintenance, Animal Control	Public Sector
1D	1974	7	Gladwin County	County Supervision	Public Sector
1D	2017	1	Federal Mogul Corporation	Produce Bearing and Bushings for use in Automotive Ind	Automotive
1D	2031	1	Inteva Products LLC	Instrument Panels	Automotive
1D	2093	1	American Axle & Manufacturing	Axles	Automotive
1D	2093	2	Grace Healthcare	Nursing Home	Healthcare
1D	2102	1	Mott Community College	Supervisors/Managers at Mott Community College	Higher Education
1D	2122	1	Creative Foam Corporation	Auto Sound Dampening	Automotive
1D	2145	1	Blue Cross Blue Shield of MI	Health Insurance	Healthcare
1D	2145	10	Blue Care Network of Michigan	Health Insurance	Healthcare
1D	2150	1	Kalamazoo Board of Education - Principals	Education	Public Sector
1D	2150	2	Kalamazoo Board of Education - Assistant Principals	Education	Public Sector
1D	2151	2	Muskegon County Road Commission	Road Maintenance	Public Sector
1D	2151	4	Muskegon County Road Commission Engineers	Road Maintenance	Public Sector
1D	2172	4	Pathways To Healthy Living	T&Ss Mental Health Staff	Healthcare
1D	2172	5	Pathways To Healthy Living	T&Ss Mental Health Staff	Healthcare
1D	2172	6	MDS Community Action Agency	Head-Start Staff-Teacher Aides, Bus Drivers, Clerical, Food Service	Public Sector
1D	2172	7	Pathways To Healthy Living	Professional Mental Health Staff	Healthcare
1D	2178	1	Northern Michigan University	College Admin Staff	Higher Education
1D	2183	1	Enstrom Helicopter Corporation	Helicopters	Aerospace
1D	2253	1	Hiawatha Behavioral Health	Professional Mental Health Staff	Healthcare
1D	2253	2	Hiawatha Behavioral Health	Para-Professional Mental Health Staff	Healthcare
1D	2256	1	City of Lansing	Public Service	Public Sector
1D	2256	2	Ingham County	Public Service	Public Sector
1D	2256	3	Blue Cross Blue Shield of MI	Health Insurance	Healthcare
1D	2256	4	Kaechele & Wilensky Pc	Legal Services	Legal

Region	Local	Unit	Corporation	Product or Service	Category
1D	2256	5	Rapaport Pollok Farrell Waldro	Legal Services	Legal
1D	2256	6	WILX-TV 10	WILX-TV 10	Other
1D	2256	7	Accident Fund Company	Workers Comp	Healthcare
1D	2256	8	City of East Lansing	Public Service	Public Sector
1D	2256	10	Blue Cross Blue Shield of MI	Health Insurance	Healthcare
1D	2256	12	Ingham County	Public Service	Public Sector
1D	2256	14	Ingham County	Public Service	Public Sector
1D	2256	15	Astera Credit Union	Credit Union	Financial
1D	2256	16	Ingham County	Public Service	Public Sector
1D	2256	20	City of Grand Ledge	Public Service	Public Sector
1D	2256	21	Lansing Enter & Pub Fac Auth	Conference Center	Entertainment
1D	2256	22	Ingham County	Office, Para-Professional and Service Employees	Public Sector
1D	2256	23	Ingham County	County Office Workers	Public Sector
1D	2256	24	Blue Care Network of Michigan	Health Insurance	Healthcare
1D	2270	2	Ventra Evart	Plastic Injected Molding for use in Automotive Ind.	Automotive
1D	2275	1	Meggitt PLC	Ball-Screw Machining and Assembly	Aerospace
1D	2275	3	USG Gledco	Press, Bake and Machine Graphite Seals	Aerospace
1D	2290	10	Family Court 9th District	Public Service - Probation	Public Sector
1D	2290	11	City of Portage	Road Maintenance, Laborers, Operators, & Mechanics	Public Sector
1D	2304	7	FCA	Automotive Dies	Automotive
1D	2399	1	Helen Newberry Joy Hospital	Hospital Support Staff	Healthcare
1D	2403	2	Lear Corporation	Terminals	Automotive
1D	2417	1	Dura Automotive Systems Inc.	Automotive	Automotive
1D	2600	1	Kent County	Public Service, Non-Uniform Employees	Public Sector
1D	2600	5	Kent District Library	Community Services	Public Sector
1D	2600	7	Network 180	Mental Health	Public Sector
1D	2600	8	John Ball Zoo	Zoo	Public Sector
1D	2600		Gerald R Ford Int'l Airport Authority	Public Service	Public Sector
1D	3052	1	New Products Corporation	Zinc Diecast GM	Automotive
1D	3803	3	Hiawatha Behavioral Health	Para-Professional Mental Health Staff	Healthcare
1D	4911	1	Sparrow Health System Inc.	Healthcare	Healthcare
1D	4911	2	Sparrow Health System Inc.	Healthcare	Healthcare
1D	4911	3	Sparrow Health System Inc.	Healthcare	Healthcare

Region	Local	Unit	Corporation	Product or Service	Category
1D	4911	4	Sparrow Health System Inc.	Healthcare	Healthcare
1D	5000	1	Michigan Technological Univ	College Clerical Staff	Higher Education
1D	6000	1	State of Michigan	State Workers	Public Sector
1D	6000	2	State of Michigan	State Workers	Public Sector
1D	6888	2	Central Michigan University	Office Support	Higher Education



REGION 2B

Region 2B members come from over 50 diverse companies in Ohio and Indiana

Region	Local	Unit	Corporation	Product or Service	Category
2B	5	1	AM General	Military Light Tactical Vehicles - HMMWV (Humvee), Service Parts and Accessories	Defense
2B	5	148	United Conveyor Corporation	Pipes, Gates, Valves, Mechanical System Components, Air Quality Injector Systems, Power Generators	Other Manufacturing
2B	5	153	Sibley Machine & Foundry Corp		
2B	5	154	Plymouth Foundry Inc.	Small Water Pump Castings for Cummins Engines	Automotive
2B	5	155	A Schulman Inc.	Paints for RV and Boating Industry	Off Road Vehicles
2B	5	156	Exel Incorporated	Cross Dock Warehouse	Automotive
2B	5	157	Patrick Metals	Aluminum Extrusions and Fabricator	Automotive
2B	5	158	Johnson L E Products Inc.	Door Hardware	Home Products/Tools Manufacturing
2B	5	159	Mc Dowell Enterprises		
2B	5	160	Steinway Musical Instruments	Distribution/Shipment of Musical Instruments	Musical Instrument Manufacturing
2B	9	1	Honeywell International	Aircraft Parts, Brake Pads, Brakes, Tires	Aerospace
2B	12	4	Acme Specialty Mfg Co	Rear View Mirrors	Heavy Truck, Mining
2B	12	23	Bohl Equipment Company	Cranes/Repair Service	Automotive
2B	12	37	Conforming Matrix Corp	Industrial Frames	Automotive
2B	12	38	Teledyne Technologies Inc.	Turbine Rocket Engines	Defense
2B	12	63	Hinkle Manufacturing Inc.	Reusable Dunnage	Automotive
2B	12	82	Metal Forming & Coining Corp	Stampings	Automotive
2B	12	110	Dentsply International	Plaster	Healthcare
2B	12	140	Gentek Inc.	Rocker Arms	Automotive
2B	12	148	Toth Industries Inc.	CNC Machining	Other Manufacturing
2B	12	156	FCA	Jeep Wrangler	Automotive
2B	12	166	Pexco Packaging Corp	Plastic Bags	Packaging
2B	12	178	Ice Industries Ronfeldt	Deep Draw Stamping	Other
2B	12	180	Aramark Corporation	Food Service	Food Service
2B	12	188	Nss Enterprises Inc.	Industrial Sweeper	Other Manufacturing
2B	12	210	Peterson American Corporation	Snap Rings	Automotive
2B	12	224	UAW Local Union	Membership Administration	Union Staff
2B	12	254	Johnson Controls Inc.	Automotive Batteries	Automotive
2B	12	265	Jeep Country Federal Credit Un	Financial	Financial
2B	12	266	Hugo Kern Und Liebers Gmbh & Co. Kg	Springs	Automotive
2B	12	269	Toledo Metro Federal Cr Union	Financial	Financial

Region	Local	Unit	Corporation	Product or Service	Category
2B	12	279	Glass City Federal Credit Union	Tellers	Financial
2B	12	287	UAW Local Union	O & C	Union Staff
2B	12	292	St Vincent Mercy Medical Cen	Medical Services	Healthcare
2B	12	293	St Vincent Mercy Medical Cen	Medical Services	Healthcare
2B	12	296	Lucas County	RNs and LPNs	Public Sector
2B	12	297	Lucas County	Auditors	Public Sector
2B	12	298	Lucas County	Clerk of Courts	Public Sector
2B	12	299	Lucas County	Sheriffs Command	Public Sector
2B	12	300	Lucas County	911 Emergency Medical Services	Public Sector
2B	12	301	Lucas County	911	Public Sector
2B	12	302	Ttl Associates Inc.	Soil Testing	Other
2B	12	303	City of Rossford	Administration	Public Sector
2B	12	304	City of Toledo	TMCC Supervisors	Public Sector
2B	12	305	Adient Plc	Seating	Automotive
2B	12	314	Kuka Ag	Parts Supplier	Automotive
2B	12	316	Lucas County	Auditors	Public Sector
2B	12	316	Lucas County		Public Sector
2B	12	317	Toledo Molding & Die Inc.	Parts	Automotive
2B	12	317	Toledo Molding & Die Inc.		Automotive
2B	12	319	Mobis North America LLC	Parts Supplier	Automotive
2B	12	319	Mobis North America LLC		
2B	12	323	Caravan Facilities Management	Janitorial	Janitorial
2B	12	324	Oakley Indus Sub Assy Div Inc.	Tire Supplier	Automotive
2B	12	325	Toledo Molding & Die Inc.	Instrument Panels	Automotive
2B	12	326	Tri-Dim Filter Corporation	Janitorial	Janitorial
2B	12	328	Piston Automotive LLC	Frames	Automotive
2B	12	330	Faurecia Exhaust	Exhaust System	Automotive
2B	12	331	Hydrochem LLC		
2B	12	332	Syncreon International Group	Sequencing	Automotive
2B	12		DMS	Instrument Panels	Automotive
2B	14	8	General Motors Corporation	Transmissions	Automotive
2B	14	32	UAW Local Union		Union Staff
2B	14	36	Mathews Ford Oregon	Ford Dealership (including salespeople)	Auto Dealership/ Mechanics
2B	14	37	Eurest	Janitorial	Janitorial
2B	23	1	General Motors Corporation	Transmissions	Automotive
2B	70	42	Basic Aluminum Castings Co	Aluminum Moldings	Automotive
2B	70	50	Brush Wellman		
2B	70	54	General Electric	Lighting Chemicals	Other Manufacturing
2B	70	56	Joy Mining	Gears for Mining Equipment	Mining Equipment
2B	70	103	Land O Lakes Inc.	Tub and Stick Butter Products	Food Manufacturing

Region	Local	Unit	Corporation	Product or Service	Category
2B	70	112	Lite Metals	Magnesium & Aluminum Casting	Defense
2B	70	114	Northern Stamping 1	Trailer Hitches	Automotive
2B	70	117	Falls Stamping & Welding Co	Stampings and Weldings	Heavy Truck
2B	70	118	Cres-Cor	Heating Ovens	Other Manufacturing
2B	70	124	Zagar Inc.	CNC Machining	Other Manufacturing
2B	70	130	SVS Vision	Vision Care & Eyewear Provider	Healthcare
2B	70	131	SVS Vision	Vision Care & Eyewear Provider	Healthcare
2B	70	132	Tremco	Rubberized Roofing Systems	Construction
2B	70	135	Cuyahoga County	Sheriffs	Public Sector
2B	70	136	Empire Plow	Tiller Tines -- Products found on Bolens, Cub Cadet, Yard Machines, Troy-Built, Husqvarna, Poulan, Craftsman & Powermate Roto Tillers	Agricultural
2B	70	137	Hedalloy Die Corporation	Small Dies for Bolts and Misc.	Other Manufacturing
2B	70	139	Dayglo	Lip Balm, Fluorescent Hairspray, Fluorescent Paints and Pigments	Personal Care/ Cosmetics
2B	70	140	Detroit Flame Hardening	Heat Treat	Other Manufacturing
2B	70	141	Cleveland Flame	Heat Treat	Other
2B	70	142	Euclid Chemical	Chemical Additives	Chemical Manufacturing
2B	70	144	Eaton Corporation	Seating	Automotive
2B	70	156	Cuyahoga County	Security	Public Sector
2B	70	157	Cuyahoga County		Public Sector
2B	70		Northern Stamping Plt 2	Trailer Hitches	Automotive
2B	86	2	Tenneco Automotive Inc.	Stamping	Automotive
2B	86	3	Automatic Feed Company	Skilled Trades	Other
2B	86	6	Fulton Industries Inc.	Flashlights	Home Products/Tools Manufacturing
2B	86	8	International Auto Components	Interior Panels	Automotive
2B	86	9	Hill Manufacturing, Inc.	Fabrication	Automotive
2B	91	1	Ohio Crankshaft	Crankshafts and Camshafts	Railway
2B	128	6	United Technologies Corp	Aviation Wheels and Brakes	Aerospace
2B	128	13	Illinois Tool Works	Commercial Dishwashers/ Soup Kettles	Food Service Manufacturing
2B	151	3	SAPA AS	Extruded Aluminum Stock for Semi Trailers and Railroad Cars	Heavy Truck, Railway
2B	164	1	Eaton Corporation	Class 6, 7, 8 Clutches	Heavy Truck

Region	Local	Unit	Corporation	Product or Service	Category
2B	169	1	Furukawa Rock Drill USA	Rock Drilling Equipment	Mining Equipment
2B	194	1	SAPA AS	Aluminum Extrusion	Other Manufacturing
2B	211	15	General Motors Corporation	Castings	Automotive
2B	211	16	Orr (Herbert E) Company	Wire Forms	Automotive
2B	211	71	Midwest Community Federal Credit Union	Finance	Financial
2B	211	72	Sims Group Ltd	Scrap	Trash/Recycling Services
2B	211	74	Johns Manville	Insulation	Aerospace, Commercial, Housing
2B	211	75	Powers Sons	Steering & Suspension	Automotive
2B	211	76	Aramark Corporation	Janitorial	Janitorial
2B	226	1	Navistar International Corp		Heavy Truck
2B	292	2	General Motors Corporation	Automotive Electronic Components	Automotive
2B	292	11	Health Solutions Incorporated	In-plant Healthcare	Healthcare
2B	292	12	American Food and Vending Corp	Cafeteria/Vending	Food Service
2B	292	13	Caravan Facilities Management	Janitorial	Janitorial
2B	294	1	Parker Hannifin Corp		
2B	295	1	Jessen Mfg Co Inc.	Screw Machine, Carbon and Alloy Steel, Brass, Bronze, and Stainless Steel	Agricultural
2B	321	24	Delaware County	Sherriff Officers	Public Sector
2B	321	25	Delaware County	Corrections Officers	Public Sector
2B	321	28	Delaware County	911	Public Sector
2B	402	4	Navistar International Corp	Heavy Trucks	Heavy Truck
2B	402	12	TSC Group		Heavy Truck
2B	402	15	Akzo-Noble Coatings	Paint	Automotive
2B	402	17	Clark County	Community Services	Public Sector
2B	440	1	General Motors Corporation	Aluminum Engine Blocks, Heads, and Trasmission Cases	Automotive
2B	440	3	Caravan Facilities Management	Janitorial	Janitorial
2B	493	2	Bellevue Mfg Co	Oil Filter Shell	Automotive
2B	499	29	General Motors Corporation		Automotive
2B	531	1	ZF Friedrichshafen AG	Steering Component Parts for Class B Trucks for Mac, Volvo, Freightliner, Peterbilt, Paccar	Automotive
2B	533	1	FRAM	Spark Plug Insulators	Automotive
2B	573	105	FCA	Auto Parts	Automotive
2B	573	115	FCA	Auto Parts	Automotive
2B	573	121	Caravan Facilities Management	Janitorial	Janitorial

Region	Local	Unit	Corporation	Product or Service	Category
2B	638	2	Defiance Stamping Company	Stamping	Automotive
2B	638	4	Gentek Inc.	Machining Bearings	Automotive
2B	647	2	Buckley Mfg Co	Gas Tanks	Automotive
2B	647	4	General Electric	Aircraft Engines	Aerospace
2B	647	16	Sodexo	Food Service	Food Service
2B	647	40	General Electric	Aircraft Engine Parts	Aerospace
2B	647	43	SVS Vision	Vision Care & Eyewear Provider	Healthcare
2B	647	45	Jack Entertainment LLC	Gaming	Gaming
2B	658	50	Navistar International Corp	Semi Truck	Heavy Truck
2B	658	60	Navistar International Corp	Semi Truck	Heavy Truck
2B	658	62	Clark County Board Of Dd	Healthcare	Public Sector
2B	661	1	Sequa Corporation	Metal for Household Appliances	Home Products/Tools Manufacturing
2B	674	6	General Motors Corporation	Warehousing	Automotive
2B	674	9	Eurest	Janitorial	Janitorial
2B	685	2	American Food and Vending Corp	Cafeteria/Vending	Food Service
2B	685	4	FCA	Transmissions	Automotive
2B	685	6	Staywell Health Management	Screening	Automotive
2B	685	9	Caravan Facilities Management	Janitorial	Janitorial
2B	685	10	Lucas County	Janitorial	Automotive
2B	696	2	General Motors Corporation	Warehousing	Automotive
2B	696	12	Eurest	Janitorial	Janitorial
2B	729	1	New Castle Plate & Steel	Flat Plate Stainless	Other Manufacturing
2B	761	15	Magnode Corporation	Aluminum Extrusion	Automotive
2B	856	2	Meggitt PLC	Aircraft Braking Systems	Aerospace
2B	856	3	Lockheed Martin Corporation	Surveillance Systems	Other
2B	856	4	Merryweather Foam Inc.	Wax Buffing Pads, Loofah Bath Scrubs and Medical Supplies	Other Manufacturing
2B	863	2	Ford Motor Company	Transmissions, Components	Automotive
2B	863	14	Ford Motor Company	In-Plant Healthcare	Healthcare
2B	863	18	Devon Industrial Group	Industrial Cleaning	Janitorial
2B	871	1	Dometic Corporation	RV Canvasses	Automotive
2B	877	1	Bunting Bearings LLC	Bearings	Automotive
2B	886	1	Federal Mogul Corporation	Spark Plugs	Automotive
2B	888	10	R P M International Inc.	Caulks and Adhesives (Building Materials)	Construction
2B	888	20	Wisco Products Inc.	Tank Caps	Agricultural, Heavy Truck
2B	888	26	Winston Heat Treating	Heat Treat	Metals

Region	Local	Unit	Corporation	Product or Service	Category
2B	888	28	Miami Industrial Trucks Inc.	Fork Truck, Equipment Service and Rental	Construction
2B	913	3	Vacationland Federal Cr Un	Banking	Financial
2B	913	6	International Auto Components	Interior Panels	Automotive
2B	913	10	SVS Vision	Vision Care & Eyewear Provider	Healthcare
2B	913	12	Perkins Township	Streets	Public Sector
2B	913	16	Tower International	Frames	Automotive
2B	913	17	Freudenberg nok Gp	Reman Trans Kits	Automotive
2B	933	1	Allison Transmission	Power Train	Automotive
2B	933	3	Rolls-Royce Plc		Aerospace
2B	933	4	Ryder System Inc.	Facilitate Parts to the Plant	Trucking, Logistics, Warehousing
2B	933	5	Professional Maintenance Of In	Facilities Maintenance	Janitorial
2B	933	6	Ford Motor Company	Warehousing Facility (expedites parts to dealerships)	Trucking, Logistics, Warehousing
2B	933		Autocar Truck	Heavy Duty Truck Components	Heavy Truck
2B	941	1	Cts Corporation	Facilities Maintenance	Janitorial
2B	947	1	LAU Industries	Circulation Fans	Other Manufacturing
2B	957	20	Carbide Grinding Company	Carbide Tools	Other Manufacturing
2B	959	4	Crescent Mfg Co	Knives and Blades	Home Products/Tools Manufacturing
2B	959	16	Woodbridge Group	Roam	Automotive
2B	975	21	United Way Worldwide	Organization	Nonprofit
2B	975	23	SVS Vision	Vision Care & Eyewear Provider	Healthcare
2B	975	24	Fort Amanda Specialties	Chelates	Chemical Manufacturing
2B	975	25	Accubuilt Inc.		
2B	975	27	Leadec	Industrial Cleaning	Janitorial
2B	977	1	Metal Fab	Stamp Metal for GM Assembly Plants	Automotive
2B	977	2	Caravan Facilities Management	Janitorial	Janitorial
2B	996	15	Aztec Steel Corporation	Metal Recycle	Trash/Recycling Services
2B	996	16	Bluestar	Salvage Scrap	Trash/Recycling Services
2B	996	23	Varbros Corp	Stamping (Multiple Companies)	Metals
2B	1005	1	General Motors Corporation	Stamping	Automotive

Region	Local	Unit	Corporation	Product or Service	Category
2B	1005	2	Aramark Corporation	Janitorial	Janitorial
2B	1005	3	Avi Foodsystems Inc.	Vending	Food Service
2B	1005	4	Jack Entertainment LLC	Casino	Gaming
2B	1033	1	Triumph Group Inc.	Fluid Systems	Aerospace
2B	1040	1	Apex Tool Group LLC	Tools	Automotive, Aerospace
2B	1050	1	Arconic Inc.	Aircraft Engine Blades, Bulk-heads and Aluminum Forgings	Aerospace, Automotive, Heavy Truck
2B	1073	1	Johns Manville	Insulation	Home Products/Tools Manufacturing
2B	1094	1	Hamlin Newco LLC	Forging and Robotic Welding	Automotive
2B	1101	10	Phd Inc.	Pneumatic Hydraulic Devices	Other Manufacturing
2B	1101	31	Bohl Equipment Company	Hi-Lo Equipment Repair	Other
2B	1112	1	General Motors Corporation	Cruze Car	Automotive
2B	1112	4	Jamestown Industries Inc.	Parts Supplier	Automotive
2B	1112	6	Magna International Inc.	Parts Supplier	Automotive
2B	1112	10	Mahoning County	Job & Family Services	Public Sector
2B	1112	11	Hydrochem LLC	Janitorial	Janitorial
2B	1112	13	Infinite Synergy	Web Pages	Other
2B	1112	14	Kmart	Warehouse	Automotive
2B	1118	1	Colfax Corporation	Blowers for Drilling Operations and Water Treatment Facilities	Other Manufacturing
2B	1120	1	Biro Manufacturing Co	Commercial Cutting Machine	Other Manufacturing
2B	1123	1	Meyers W F Co	Saws and Saw Blades for Limestone Industry	Other Manufacturing
2B	1166	1	FCA	Aluminum Castings	Automotive
2B	1166	2	Caravan Facilities Management	Janitorial	Janitorial
2B	1181	30	ZF Friedrichshafen AG	Parts Supplier	Automotive
2B	1216	1	Flex-N-Gate Corp	Lights	Automotive
2B	1219	1	Ford Motor Company	Engines, Components	Automotive
2B	1219	2	Union Sorters Of America	Quality Sorting	Automotive
2B	1244	1	HaYes Track	Train Safety Equipment	Railway
2B	1250	1	Ford Motor Company	I-4 Engine, V6 Engine	Automotive
2B	1250	2	Ford Motor Company	Nursing	Healthcare
2B	1250		Leadec	Industrial Cleaning	Janitorial
2B	1302	15	FCA	Transmission Engineering	Automotive
2B	1302	25	FCA	Clerical	Automotive
2B	1302	30	FCA	Engineering	Automotive
2B	1327	2	Tower International	Stamping	Automotive
2B	1327	9	Freudenberg nok Gp	Seals	Automotive

Region	Local	Unit	Corporation	Product or Service	Category
2B	1368	1	Rbc Bearings Inc.	Small Bearings for Harley Davidson and Fairfield Oerlikon	Automotive
2B	1389	1	Bowmar LLC	Aerospace and Defense Controls Manufacture	Aerospace
2B	1395	1	American Axle & Manufacturing	Gears	Automotive
2B	1435	15	FCA	Tork Converter	Automotive
2B	1435	16	FCA	O & C	Automotive
2B	1435	17	FCA	Engineers	Automotive
2B	1435	18	Caravan Facilities Management	Janitorial	Janitorial
2B	1435	20	Hollywood Casino	Gaming	Gaming
2B	1437	1	Sumitomo Bakelite Co. Ltd.	Resin	Automotive
2B	1448	1	Plymouth Tube Company	Tubing for Gas and Oil Industry	Other Manufacturing
2B	1457	1	Advanced Bearing Materials LLC	Steel	Metals
2B	1518	1	Converto Mfg Co	Manufacturing	Other Manufacturing
2B	1549	1	Amanda Manufacturing	Automotive Parts	Automotive
2B	1571	10	Industrial Fabricating	Custom Metal Fabrication	Other Manufacturing
2B	1571		Industrial Composites	Molding Compounds	Other Manufacturing
2B	1588	1	Ppg Industries Inc.	Paint	Automotive
2B	1588	5	Central Aluminum	Patio Enclosures	Home Products/Tools Manufacturing
2B	1588	6	Bodycote Thermal Process. Inc.	Heat Treat	Automotive
2B	1588	7	Penn National Gaming Inc.	Gaming	Gaming
2B	1685	1	GKN	Automotive Parts	Automotive
2B	1686	1	Cooper-Standard Automotive	Automotive Parts	Automotive
2B	1714	1	General Motors Corporation	Parts Supplier	Automotive
2B	1714	2	Leadec	Janitorial	Janitorial
2B	1765	1	Dana Corporation	Driveshaft/Steering Shafts	Automotive, Heavy Truck
2B	1803	1	Continental Structural Plastic	Plastics	Automotive
2B	1825	1	Centria Inc/NCI	Aluminum Panels (Building Materials)	Construction
2B	1834	2	Praxair Inc.	Gas Supplier	
2B	1834	8	Buckeye Board of Education	Education	Public Sector
2B	1834	12	Ashtabula County Board Dd (Happy Hearts)	Transportation	Public Sector
2B	1834	16	Lake County	Transportation	Public Sector
2B	1842	1	Adient Plc	Foam Seating	Automotive
2B	1888	1	Almco Steel Products Corp	Metal stamping	Automotive
2B	1889	1	Continental Structural Plastic	Plastics	Automotive

Region	Local	Unit	Corporation	Product or Service	Category
2B	1904	1	H.I.G. Capital Management Inc.	Seal related Parts for automotive industry	Automotive
2B	1935	1	Parker Hannifin Corp	hydraulic pumps	Automotive
2B	1949	1	Federal Mogul Corporation	Unipiston seals for GM, Ford, Chrysler, Toyota	Automotive
2B	1963	2	City of Anderson	City employees	Public Sector
2B	1963	3	SVS Vision	Vision Care & Eyewear Provider	Healthcare
2B	1963		Madison County Employees	County	Public Sector
2B	1983	1	Wurth (Adolph) Gmbh & Co	Nut and bolts warehousing facility	Trucking, Logistics, Warehousing
2B	2000	1	Ford Motor Company	E-Series, Med. Duty F-650 & F750, Super Duty F350/F450/F550	Automotive
2B	2000	2	Ford Motor Company	Nursing	Healthcare
2B	2000	3	Leadec	Industrial Cleaning	Janitorial
2B	2000	4	Comprehensive Logistics Co. Inc	Sorters for Ford OHAP	Automotive
2B	2000	5	Detroit Chassis	Kitting for Ford OHAP	Automotive
2B	2005	1	Otterbein University	Maintenance/Grounds Keeping	Higher Education
2B	2021	2	Toledo Molding & Die Inc.	Blow Molding	Automotive
2B	2021	4	Toledo Molding & Die Inc.	Blow Molding	Automotive
2B	2024	1	Pendaform Corporation		
2B	2049	1	Essex Group Incorporated	Wire Insulation Supplier	Other Manufacturing
2B	2050	1	Sperry & Rice Manuf Co	Rubber Lining/Trim	Automotive
2B	2063	1	American Baler	Industrial Cardboard Balers	Other Manufacturing
2B	2075	1	General Dynamics Corporation	Defense Vehicles	Defense
2B	2147	1	General Dynamics Corporation	Product: Defense Vehicles (Abrams Tank, Stryker, Namer)	Defense
2B	2158	2	Manchester Tank	Air Tanks for Compressors and LP Tanks	Other Manufacturing
2B	2192	1	Lorain County	Job and Family. Welfare, Child Support, Senior Protective Services	Public Sector
2B	2192	2	Oberlin College	Custodial, Skilled Trades, Food Services	Higher Education
2B	2192	3	Lorain County	Children Protective Services	Public Sector
2B	2209	1	General Motors Corporation	Chevy and GMC Trucks	Automotive
2B	2209	2	General Motors Corporation	In-Plant Healthcare	Healthcare
2B	2209	3	Caravan Facilities Management	Janitorial	Janitorial
2B	2209	4	Android Industries	Tire Sequencing	Automotive
2B	2213	1	St Vincent Mercy Medical Ctr	Medical Services	Healthcare
2B	2262	1	Eaton Corporation	Aircraft Fuel Pumps	Defense, Other

Region	Local	Unit	Corporation	Product or Service	Category
2B	2262	2	BWX Technologies Inc.	Containment Vessels for Nuclear Rods	Defense
2B	2269	1	Volvo	Warehousing	Automotive
2B	2279	1	Toledo Molding & Die Inc.	Plastic Injection/Assembly	Automotive
2B	2289	1	Martinrea International Inc.	Stamping Facility makes products for Big 3 and Toyota	Automotive
2B	2308	1	MillerCoors	Beer	Food Manufacturing
2B	2308	2	Integrated Power Services LLC	Rebuild Generators	Other
2B	2308	3	Detroit Flame Hardening	Heat Treat	Other Manufacturing
2B	2308	4	Lesaint Logistics	Distribution Beer Cans /Medical Supplies	Other Manufacturing
2B	2317	1	Oerlikon Ag	Custom Gear Manufacturer for Allison Transmission	Automotive
2B	2335	1	Lear Corporation	Seating for Chicago Assembly for Ford Explorer	Automotive
2B	2335	1	Lear Corporation	Sub Assembly Seat Manufacturer for Lear Seating Hammond, IN	Automotive
2B	2335	2	Contract Services Group	Sub Assembly Seat Manufacturer for Lear Seating	Automotive
2B	2339	1	Aisin Seiki Co Ltd	Calipers, Steering Knuckles, Suspension Components, Brake Rotors for Toyota and Ford	Automotive
2B	2359	1	Steinway Musical Instruments	Brass Instruments	Musical Instrument Manufacturing
2B	2382	1	International Auto Components	Automotive Interiors	Automotive
2B	2387	1	Hayashi Telempu Company Ltd	Auto- Carpeting, Trim	Automotive
2B	2391	1	International Auto Components	Automotive Carpet	Automotive
2B	2413	1	FRAM	Oil Filters	Automotive
2B	2414	1	Engineered Machined Products	Custom Machining	Other Manufacturing
2B	2562	1	Tect Corporation	Aircraft Engine Blades	Defense, Other
2B	3044	1	A K Steel Corporation	Steel for Stamping Facilities providing products for Big 3 and Toyota	Automotive
2B	3045	1	Continental Midland LLC	Nuts and Bolts	Automotive
2B	3046	1	Johnson Controls Inc.	Automotive Batteries	Automotive
2B	3048	1	Royal Dsm	Composites for Injection Molding used for products for Big 3 and John Deere	Automotive, Agricultural
2B	3048	2	Doncasters Group Ltd	Components for Natural Gas Turbines used to generate electricity	Other Manufacturing
2B	3048	4	Tropicana Entertainment, Inc.	Casino	Gaming

Region	Local	Unit	Corporation	Product or Service	Category
2B	3050	1	Autocar LLC	Heavy Duty Truck Manufacturing	Heavy Truck
2B	3053	1	Thyssen Krupp	Steering Columns	Automotive
2B	3055	1	Comer Holdings LLC	Seating Supplier for GM	Automotive
2B	3056	1	Lucas County	Corrections, Law Enforcement, Security, etc.	Public Sector
2B	3059	1	Pittsburg Glass Works	Glass for Big 3, Toyota, Mercedes	Automotive
2B	3061	1	Pittsburg Glass Works	Auto Glass	Automotive
2B	3462	1	A K Steel Corporation	Steel for Dishwashers and Automobile Parts	Automotive
2B	4104	1	A K Steel Corporation	Manufacturing of Electrical Steel	Automotive
2B	4199	1	American Axle & Manufacturing	Forging and Machining	Automotive, Agricultural
2B	4199		Colfor	Automotive/Agriculture	Automotive, Agricultural
2B	4444	8	Johns Manville	Fiberglass	Other Manufacturing
2B	4444	9	Gentek Inc.	Rocker Arms	Automotive
2B	5242	1	Toledo Board Of Education	School Administration	Public Sector
2B	5242	5	Toledo Area Reg. Transit Auth.	Dispatch and Supervision	Public Sector
2B	5242	6	Toledo-Lucas County Public Libraries	Librarians	Public Sector
2B	9212	1	State of Indiana	State Employees	Public Sector
2B			Dana Corporation	Axles	Automotive



REGION 4

Region 4 includes the north-central states of Illinois, Iowa, Nebraska, Wisconsin, Minnesota, North Dakota, South Dakota, Wyoming and Montana

Region	Local	Unit	Corporation	Product or Service	Category
4	6	1	Navistar International Corp	Engines	Heavy Truck
4	6	3	Berteau-Lowell Plating Works	Plating and Metal Finishing	Metals
4	6	4	Sipi Metals Corp	Precious and Non-Precious Metals	Metals
4	6	7	Accurate Perforating Company	Metal Perforation, Fabrication, Finishing Services	Automotive
4	6	13	Marsden Services LLC	Janitorial Services to Navistar	Janitorial
4	9	4	MillerCoors	Brewery Workers, Sanitation and Maintenance Workers and Lab Workers	Food Manufacturing
4	9	8	Malteurop Groupe	Malting Plant for the Beer Industry	Food Manufacturing
4	9	18	Briss Malting Industries	Services, Food & Beverage Manufactures, (MillerCoors), Craft Brewer and has 32 pound Extract Growler available for homebrewers	Food Manufacturing
4	13	25	Rousselot A Sobol Co.	Producer of Gelatin and Collagen Peptides for use in Pharmaceuticals, Food Products and Nutritional Products	Food Manufacturing
4	13	30	Aramark Corporation	Food and Cafeteria Service for John Deere Dubuque Works	Food Service
4	72	7	Palmen Motors Inc.	Auto Mechanics	Auto Dealership/ Mechanics
4	74	1	Deere & Co	Round Baler, Large and Small Square Balers, Self Propelled Wind Rowers, Mower-Conditioners and Pull Type Forage Harvesters	Agricultural
4	74	2	City of Albia	Streets and Sanitation Services	Public Sector
4	74	3	Monroe County Sheriffs Dept	Sheriffs Dispatchers and Jailers	Public Sector
4	75	1	FCA	Fiat Chrysler Parts Distribution	Automotive
4	75	3	Caravan Facilities Management	Janitorial	Janitorial
4	79	1	Deere & Co	John Deere North American Parts Distribution Center – Milan, Illinois – America’s 2nd largest warehouse with 61 acres under roof	Agricultural
4	79	2	Aramark Corporation	Food service @ John Deere North American Parts Distribution Center	Food service
4	82	1	Modine Manufacturing Company	Designs, Manufactures and Tests Heat Transfer Products	Automotive

Region	Local	Unit	Corporation	Product or Service	Category
4	94	1	Deere & Co	Skid Steers, Backhoes, Construction & Utility Crawlers, Crawler Loaders, Production Crawlers & Pipe Layers, Tracked Feller-Buncher & Knuckle Boom Loader Forestry Machines & Cabs for various other John Deere Machines	Agricultural
4	95	7	Blackhawk Community Credit Union	Consumer Financial Products	Financial
4	95	8	Provisur Tech/Weiler and Company	Food Processing Systems Products, Grinders, Mixers, and Complete System Design	Food Service Manufacturing
4	95	9	Mercy Health System Corporation	Health Services, Mercy Health is the parent/regional provider. Our members are only in one facility	Healthcare
4	95	12	Parker Community Credit Union	Consumer Financial Products	Financial
4	95	15	Abitec Chemical Company	Chemicals, Emulsifiers and Surfactants for Cosmetics, Personal Care, Household, Industrial and Institutional Company	Home Products/Tools Manufacturing
4	120	1	Donaldson Company	Filters	Agricultural
4	125	1	FCA	Parts Distribution and Warehouse	Automotive
4	125	4	Napco	Military Engineering and Product Build	Defense
4	125	40	Whirltronics Inc.	Lawnmower Blades	Home Products/Tools Manufacturing
4	125	51	Independent School Dist 16	Pre-School Teachers	Public Sector
4	125	52	Caravan Facilities Management	Janitorial Services for FCA	Janitorial
4	125	53	Centennial Independent School District 12	Pre-School Teachers	Public Sector
4	145	2	American Auto Works	Logistics	Other
4	145	4	Earl M. Jorgensen Steel	Cut and Process Rolled Steel for Sales and Distribution	Automotive
4	180	1	CNH	Case IH Magnum Tractors	Agricultural
4	180	2	CNH	Research Facility	Agricultural
4	241	1	Duluth Auto Dealers Assoc	Kolar Chevrolet Auto Mechanics	Auto Dealership/ Mechanics
4	241	2	Duluth Ford LLC	NorthStar Auto Mechanics	Auto Dealership/ Mechanics
4	241	3	Duluth Auto Dealers Assoc	Duluth Dodge Auto Mechanics	Auto Dealership/ Mechanics
4	241	4	Duluth Auto Dealers Assoc	Krenzen Cadillac Auto Mechanics	Automotive

Region	Local	Unit	Corporation	Product or Service	Category
4	241	6	Duluth Auto Dealers Assoc	Kolar Toyota Auto Mechanics	Auto Dealership/ Mechanics
4	241	7	Maney International	Semi Truck Mechanics	Automotive
4	242	51	CRST International Inc.	Truck Leasing and Repair	Automotive
4	270	1	The Wittern Group	Vending Equipment, Pop Machines, Food Vending, Fastenal, Menards	Food Service Manufacturing
4	270	4	Wiese Industries Inc.	Farm Implement Replacement Parts	Agricultural
4	281	1	Deere & Co	4 Wheel Drive, Utility & Production Loaders, Motor Graders, Skidders, Wheeled Feller-Bunchers & Articulated Dump Trucks	Agricultural
4	291	1	Axle Tech	Supplies Axles and Transfer Case Housings to Defense and Commercial Truck Manufacturers	Heavy Truck, Defense
4	349	1	Iron Trail Motors LLC	Auto Mechanics	Auto Dealership/ Mechanics
4	349	2	E Range & Hibb Auto Deal Assoc	Auto Mechanics Washcke Auto Plaza, Lundgren Motors, Hibbing Chrysler, Northwoods Ford, Ranger Chevrolet	Auto Dealership/ Mechanics
4	349	3	Grand Rapids GM	Auto Mechanics	Auto Dealership/ Mechanics
4	349	4	Grand Rapids Chrysler	Auto Mechanics	Auto Dealership/ Mechanics
4	407	1	UDF Management Inc.	Custom Designed Closed Die Steel Components	Metals
4	434	1	Deere & Co	Planters & Cylinders	Agricultural
4	443	16	Wisco Industries Inc.	Pizza Ovens (model 412-5), Food Displays, many products are imported so look for Made in America on website	Food Service Manufacturing
4	450	1	Deere & Co	Self-Propelled Sprayers, Cotton Harvesters, Tillage Equipment & Grain Drills	Agricultural
4	469	1	Master Lock	Master Lock Combination Padlocks	Home Products/Tools Manufacturing
4	551	1	Ford Motor Company	Ford Taurus and Explorer	Automotive
4	551	3	Team Solutions	Janitorial Services for the Ford Assembly Plant	Automotive
4	551	5	Union Sorters Of America	Sort Parts at the Ford Assembly Plant	Automotive

Region	Local	Unit	Corporation	Product or Service	Category
4	551	6	TDM	Performs Up Fitting of all Explorer and Taurus Police Vehicles	Automotive
4	557	1	Wisconsin Metal Prod Co	Utilizes Mechanical Presses up to 2000 tons to produce Close Tolerance, Medium to Heavy Gauge Custom Metal Stampings	Metals
4	565	1	Cast Technologies Inc.	Foundry and Machine Shop, Supplies Caterpillar, Oshkosh Defense JLTV and Borg Warner	Agricultural
4	578	1	Oshkosh Truck Corporation	Military Trucks for Department of Defense, Commercial Cement Mixers and Municipal Vehicles	Automotive
4	579	4	Watchfire Signs LLC	LED High Resolution Signs, LED Medium Resolution Signs, LED Standard Resolution Signs, LED Monochrome Signs, LED Time and Temperature Signs, LED Gas Price Signs, Digital Billboards	Other Manufacturing
4	588	1	Ford Motor Company	Stamps parts for multiple vehicle lines for multiple assembly plants	Automotive
4	588	4	Wayne Steel Distribution Ctr	Cut and Process Rolled Steel for SET Enterprises to use for stamping parts for Ford	Automotive
4	588	6	Set Enterprises Inc.	Stamping parts for multiple vehicle lines at Ford	Automotive
4	588	9	DFM Janitorial	Janitorial services for the Ford Chicago Stamping Plant	Janitorial
4	592	1	United Technologies Corp	Aerospace Electric Generating Systems, Emergency Power Generating Systems, and Actuation Components for nearly all Commercial and Military Aircraft	Aerospace
4	592	4	Tomy Company Ltd	Space Systems Components for Military and Commercial Rockets including the THAAD Anti-Missile Defense System	Defense
4	592	7	Forgings & Stampings Inc.	Components for the Abrams Tank	Defense
4	592	8	Aqua Aerobic Systems	Components for Various Torpedo Systems	Defense
4	616	1	Lattner PM	Manufactures both Fuel-Fired and Electric Boilers for a variety of Industrial Applications	Other Manufacturing

Region	Local	Unit	Corporation	Product or Service	Category
4	646	1	Rank Group Ltd	Wire Harness and other Electrical Supplies for Car, Truck and Motor Manufacturers	Automotive
4	718	1	Gunite	Brake Drums and Slack Adjusters for Heavy Duty Trucks	Automotive
4	719	1	Caterpillar Inc.	645 & 710 Heavy Industrial and Railroad Engines	Railway
4	722	6	General Motors Corporation	Store and ship parts to GM Dealers	Automotive
4	722	22	Ford Motor Company	Store and ship parts to Ford Dealers	Automotive
4	751	1	Caterpillar Inc.	24m Motor Grader, 100 Ton Truck, 130 Ton Truck, 170 Ton Truck, 240 Ton Truck, 400 Ton Truck, 50 Ton Truck, 60 Ton Truck, 70 Ton Truck, Scrapers	Construction
4	803	1	GKN	Driveshafts, Clutch Assemblies for off-road applications	Off Road Vehicles
4	807	1	CNH	Tractor Loaders, Backhoes, Dozers & Combine Harvesting Headers for Case IH & New Holland brands	Agricultural
4	833	1	Kohler Co	Bath and Toilet Fixtures, Faucets, various engines and generators	Home Products/Tools Manufacturing
4	838	2	Deere & Co	Engine Works – John Deere Diesel Engines & Power Centers for other manufacturers	Agricultural
4	838	14	Wayne Industrial Holdings	Manufacture Garbage Trucks	Heavy Truck
4	838	16	O’Neal Industries Inc.	Providers Steel products to industry	Metals
4	838	21	Waterloo Warehousing And Service	Trucking and Distribution Services	Trucking, Logistics, Warehousing
4	838	22	United Way Worldwide	Non-Profit	Nonprofit
4	838	26	Schoitz Engineering Inc.	Tool and die shop	Other
4	838	28	ABM Industries Incorporated	Janitorial Services for John Deere	Janitorial
4	838	29	Universal Mfg Co	Remanufacture Automotive Parts	Automotive
4	844	1	Mahoney Foundries	Job Shop, supplies customers with Brass and Bronze Products	Other
4	865	1	Deere & Co	Combine Harvesters & Various Harvesting Headers	Agricultural
4	865	2	Aramark Corporation	Food Service @ John Deere North American Parts Distribution Center	Food Service
4	865	3	Dana Corporation	Off-Highway Drivetrain Components	Automotive
4	867	10	Holiday Ford	Body Shop and Mechanics	Auto Dealership/ Mechanics

Region	Local	Unit	Corporation	Product or Service	Category
4	867	11	City of Austin	Utilities	Public Sector
4	867	12	City of Austin	Park Department	Public Sector
4	867	13	City of Austin	Waste Water Department	Public Sector
4	867	14	City of Austin	Street Department	Public Sector
4	867	15	Independent School Dist 492	Provide Janitorial and Maintenance Services	Janitorial
4	867	16	Mower Countt	Highway Department	Public Sector
4	867	21	ASA	Body Shop and Mechanics	Auto Dealership/ Mechanics
4	867	32	Motor Inn Company	Body Shop and Mechanics	Auto Dealership/ Mechanics
4	867	33	Syverson Ford	Body Shop and Mechanics	Auto Dealership/ Mechanics
4	867	35	Holiday Cars Austin	Body Shop and Mechanics	Auto Dealership/ Mechanics
4	867	36	Thermo King Sales & Svc Inc.	Installers of Refrigeration Units on Semi Truck Trailers	Other
4	890	1	Xylem Inc.	Industrial Pumps and Circulators	Other Manufacturing
4	893	1	Emerson Electric Company	Industrial Flow Control Valves	Oil, Gas and Nuclear
4	893	3	Interface Solutions Inc.	Gaskets and Seals	Automotive, Agricultural
4	893	10	Ritchie Industries	Heated Fresh Watering Tanks for Animals	Agricultural
4	893	11	Lennox International Inc.	Residential Heating and Cooling Units	Home Products/Tools Manufacturing
4	893	26	Ryerson, Incorporated	Steel supplier to Lennox	Metals
4	893	27	City of Marshalltown	Maintenance Services for the City of Marshalltown, IA	Public Sector
4	904	1	HCC	Combine Reels, Sieves, Chaffers, Augers, Grain Lids, Reels and Unload Tubes	Agricultural
4	958	1	ZF Friedrichshafen AG	3rd Tier Supplier of Electrical Components to Auto	Automotive
4	958	3	Badger Equipment Company	Manufactures Cranes	Construction
4	974	1	Caterpillar Inc.	Builds Equipment Crawler Tractors D11, D10, D9, D7, D6	Agricultural
4	974	4	Tazewell Machine Works	Foundry and Machine Shop Supplies	Other Manufacturing
4	974	6	City of Delavan	Delavan Public Servant Police and Public Works	Public Sector
4	974	9	City of Mason	Mason City Police	Public Sector
4	974	10	City of Mason	Mason City Public Works	Public Sector

Region	Local	Unit	Corporation	Product or Service	Category
4	974	12	Village of South Pekin	South Pekin Public Works	Public Sector
4	997	4	Whirlpool Corporation	Replacement Parts for Whirlpool	Home Products/Tools Manufacturing
4	997	12	Vernon Company	Promotional Goods and Decals for Trucks (must request Union Made)	Printing/Apparel/Promotional Goods
4	997	18	Thombert Inc.	Polyurethane Forklift Wheels	Other Manufacturing
4	997	23	Progress Industries	Assisted Living Services	Healthcare
4	997	27	Accura Healthcare	Assisted Living Services	Healthcare
4	997	28	Accura Healthcare	Assisted Living Services	Healthcare
4	1023	1	Tester	Various Paints: Testers Enamel, Testers Water Base, Rustoleum ATU (automotive touch up), Model Master, Anitas Craft, Testers Craft, Modern Masters, Rustoleum American Accents	Paint
4	1024	1	Evergreen Packing Equipment	Develop and produce Fiber-Based Packaging Products and Designs and manufactures packaging equipment for fresh, refrigerated food products	Packaging
4	1024	2	PMX Industries	Produces a wide range of Copper Materials in Strip, Coil, Sheet, Plate and Tube Forms with a heavy emphasis on research and development.	Metals
4	1076	8	Sheboygan Paint Company	Mix different paint applications to sell to their customers	Other Manufacturing
4	1076	16	K-P Welding & Fabricating, Inc.	Mannhardt Ice Bins and Ice Machines. Job Shop will build to suit customers	Food Service Manufacturing
4	1088	1	Black Brothers Co	Laminating presses, roll coaters and roll coating equipment	Other Manufacturing
4	1092	8	Acme Galvanizing	Job Shop Metal Coating Company specializing in Zinc Electroplating and Hot Dip Galvanizing	Other
4	1102	1	PCMC	Build and service large machinery for pattern and print on a variety of paper and plastic products	Automotive
4	1102	2	Northern Engraving	Makes metal rollers for machinery for pattern and printing on a variety of paper and plastic products	Other Manufacturing
4	1178	1	FCA	Logistics	Automotive
4	1237	1	Federal Mogul Corporation	Champion Brand Spark Plugs	Automotive

Region	Local	Unit	Corporation	Product or Service	Category
4	1268	1	FCA	Jeep Cherokee	Automotive
4	1268	2	Adient Plc	Seats for the jeep Cherokee	Automotive
4	1268	3	Staywell Health Management	Employee wellness for FCA workers	Healthcare
4	1268	4	Android Industries	Engine Final Assembly for the Jeep Cherokee	Automotive
4	1268	5	Syncreon International Group	Sequencing and Logistics	Automotive
4	1268	7	Oakley Industires Sub Assembly Division Inc.	Sub-Assembly of Wheels and Tires for the jeep Cherokee	Automotive
4	1268	8	Grupo Antolin North America	Headliners for the Jeep Cherokee	Automotive
4	1268	9	Tri-Dim Filter Corporation	Janitorial Services for Belvidere Assembly	Janitorial
4	1268	12	Boone County	Public Services	Public Sector
4	1268	13	Maclellan Services Inc.	Belvidere Assembly Paint Shop Janitorial Services	Janitorial
4	1268	14	Syncreon International Group	Sequencing and Logistics for Toledo Mold and Die Interior Parts	Automotive
4	1291	1	Toro Company	Store, Ship and Distribute parts for Toro Products	Trucking, Logistics, Warehousing
4	1332	1	VPI LLC	Industrial Flooring Tiles	Other Manufacturing
4	1349	1	Johnson Gas Appliance Co	Manufactures Heat Treating, Metal Melting and Soldering Furnaces for Industry and School shops	Other Manufacturing
4	1391	1	East Dubuque Nitrogen Partners	Manufactures Nitrogen Fertilizer, primarily Ammonia and Urea Ammonium Nitrate Fertilizers.	Agricultural
4	1414	1	McLaughlin Body Company	Engineering and fabrication of Operator Protection Systems for Construction, Military, Agriculture and other Heavy-Duty Vehicles	Defense, Agricultural
4	1472	1	Vollrath	Metal Pans, Cookware, Restaurant and Kitchen Supplies	Home Products/Tools Manufacturing
4	1540	1	Russell Corporation	Equipment- Gymnastic Mats, Balance Beams, Basketball Hoops used in College and Pro Arenas	Sporting Goods
4	1540	6	Percival Scientific	Climate Control Cabinets and Grow Booths	Automotive

Region	Local	Unit	Corporation	Product or Service	Category
4	1576	1	Cotta Transmission Co	High Speed Transmissions, Heavy Duty Pump Drives, Creep Drives, Transfer Cases, serving Construction, Mining, Industrial, Drilling, Oil Field Range Rigs, Specialty Truck Industries	Construction
4	1613	1	Energy Manufacturing Co	Design and manufacture of Hydraulic Cylinders and Fluid Power Components and Systems	Automotive
4	1672	1	Andersen Corporation	Storm Doors sold at Home Depot	Home Products/Tools Manufacturing
4	1761	1	FCA	FCA Office and Clerical: Jeep Cherokee	Automotive
4	1761	2	FCA	FCA Engineering: Jeep Cherokee	Automotive
4	1761	6	Boone County	Public Services	Public Sector
4	1761	8	Belvidere Township	Public Services	Public Sector
4	1761	10	Boone County	Public Services	Public Sector
4	1896	1	Sears Mfg Co	Design and manufacture of Suspension and Non-Suspension Seating Systems for Agricultural, Construction, and Material Handling Equipment and over the road truck markets	Automotive
4	1982	1	Tomy Company Ltd	Packaging, Labeling, Distribution of TOMY Toys and Games	Packaging
4	2020	1	Donaldson Company	Filtration products primarily for John Deere and Caterpillar	Agricultural
4	2056	1	Ipsen International Inc.	Components for Industrial Ovens	Other Manufacturing
4	2056	2	Ipsen International Inc.	Industrial Ovens	Other Manufacturing
4	2096	1	Caterpillar Inc.	Manufactures and Supplies Fuel Systems for Caterpillar, Navistar and Diesel injection Services	Agricultural, Heavy Truck
4	2114	1	General Motors Corporation	OEM Parts Warehouse for GM Dealers	Automotive
4	2125	1	Crenlo	Cabs for the Agricultural Industry	Agricultural
4	2128	1	Thyssen Krupp	Forged Crankshafts, Machined Crankshafts	Automotive
4	2132	1	SNC Manufacturing Company	Large Electrical Supplies and Fuses for Industrial use	Other Manufacturing
4	2201	1	Modern Plating Corporation	Plating/Coating of Fasteners	Automotive

Region	Local	Unit	Corporation	Product or Service	Category
4	2261	4	Stephenson County	Public Services	Public Sector
4	2261	8	Stephenson County	Public Services	Public Sector
4	2282	1	Moline Library	State of the Art Library promoting the power of lifelong learning to a diverse community through quality resources and services	Public Sector
4	2282	2	Black Hawk College	Providing Support Staff, Maintenance, Custodial and Grounds work for the College	Higher Education
4	2282	3	Rock Island Public Library	State of the Art Library promoting the power of lifelong learning to a diverse community through quality resources and services.	Public Sector
4	2293	1	Navistar International Corp	Provides Technical, Office, Engineering Services for Navistar	Heavy Truck
4	2323	1	Mitsubishi Belting Ltd.	Automotive Belts for GM, Cadillac ct-6v6 3.6l, Corvette v8 6.2L, ctc-v v8 6.2L, Camaro v8 6.2L, Mustang l4 2.3L, Camry L4 2.4L, SIA Impreza l4 2.0L, VW Hetta, Beetle, Golf, Passat R5 2.5L, L4 2.0L, L4 1.6L, L4 1.4L, L3 1.0L	Automotive
4	2384	1	Mattoon Community Schools	School Employees	Public Sector
4	2384	2	Shelbyville School District 4	Public Services	Public Sector
4	3212	3	Tower International	Stamp and Sub-Assemblies of unibody parts for the Ford Explorer and Taurus	Automotive
4	3212	6	ZF Friedrichshafen AG	Drive Train components for the Ford Explorer and Taurus	Automotive
4	3212	7	Dakkota Integrated Systems LLC	Front and Rear Fascia and Headliners for the Ford Explorer and Taurus	Automotive



REGION 5

Region 5 covers 17 states in the western and southwestern United States: Missouri, Texas, Oklahoma, Arkansas, Louisiana, Kansas, Colorado, New Mexico, California, Oregon, Nevada, Arizona, Utah, Idaho, Alaska, Washington and Hawaii.

Region	Local	Unit	Corporation	Product or Service	Category
5	31	1	General Motors Corporation	Chevy-Malibu	Automotive
5	76	72	ABM Industries Incorporated	Janitorial	Janitorial
5	119	6	Navistar International Corp	Parts Distribution for Medium/ Heavy Duty Trucks and Buses	Heavy Truck
5	119	87	Flex-N-Gate Corp	Bumpers (for GM)	Automotive
5	119	88	Challenge Mfg Company	Manufactures Under Body Parts for GM SUV & GM Trucks	Automotive
5	129	120	American Excelsior Company	Manufactured & Distributed products for Packaging, Cushion- ing, Engineered Foam, Erosion Control, & Excelsior Wood Fibers	Packaging
5	129	130	Reliance Steel & Aluminum Co	Steel/Aluminum	Automotive
5	129	162	Ball Corporation	Aluminum Cans for Miller Lite and Coca-Cola	Packaging
5	129	171	Assn Of Prof Flight Attendants	Office Staff for Pilots	Aerospace
5	129	175	Android Industries	Tires, Wheels Sequencing	Automotive
5	129	176	Lear Corporation	Seats/Electrical	Automotive
5	129	177	Penske Corporation	Trucking and Warehousing	Trucking, Logistics, Warehousing
5	129	179	Universal Truckload Services Inc.	Wiring Transmission	Automotive
5	179	120	Meggitt PLC	Defense	Aerospace
5	179	131	L3 Technologies Inc.	Ocean Systems	Defense
5	179	132	Esterline Technologies Corp		Aerospace
5	186	24	Deere & Co	Parts	Trucking, Logistics, Warehousing
5	186	26	FCA	Chrysler Auto Parts	Automotive
5	186	45	Ford Motor Company	Ford Parts	Automotive
5	186	46	ABM Industries Incorporated	Janitorial	Janitorial
5	186	47	Caravan Facilities Management	Janitorial	Janitorial
5	218	1	Textron Incorporated	Helicopters	Aerospace
5	230	1	FCA	Parts	Automotive
5	230	2	Caravan Facilities Management	Janitorial	Janitorial
5	249	2	Ford Motor Company	F-150, Transit Van	Automotive
5	249	4	Ford Motor Company	F-150, Transit Van	Automotive
5	249	6	Ford Motor Company	Nurses	Healthcare
5	249	11	ABM Industries Incorporated	Janitorial	Janitorial
5	249	12	Team Solutions	Janitorial	Janitorial
5	249	13	Duluth Services Inc.	Ford Parts	Automotive
5	276	1	General Motors Corporation	Escalade, Yukon, Tahoe	Automotive
5	276	2	Aramark Corporation	Janitorial	Janitorial
5	282	35	Woodbridge Group	Seating Foam	Automotive

Region	Local	Unit	Corporation	Product or Service	Category
5	282	42	AFB	Dog & Cat Food Flavoring	Food Manufacturing
5	282	43	Waste Management	Trash Removal	Trash/Recycling Services
5	282	44	Waste Management	Trash Removal	Trash/Recycling Services
5	282	45	Lear Corporation	Van Seating	Automotive
5	282	57	Challenge Mfg Company	Stamping/Welding	Automotive
5	282	58	Psa Peugeot Citroen S.A.	Truck Seating Units	Automotive
5	286	23	Phoenix Management Inc.	Maintenance	Other
5	286	27	Umicore S.A./N.V.	Catalyst	Automotive
5	286	28	T-Square Logistics Corporation	Trucking and Warehousing	Trucking, Logistics, Warehousing
5	286	29	Penske Corporation	Trucking and Warehousing	Trucking, Logistics, Warehousing
5	286	30	Penske Corporation	Trucking and Warehousing	Trucking, Logistics, Warehousing,
5	286	33	Spartan Aviation Industries	Teachers	Higher Education
5	286	45	Triad Inc.	Trucking and Warehousing	Trucking, Logistics, Warehousing
5	317	1	Textron Incorporated	Service	Aerospace
5	431	1	General Motors Corporation	Parts	Automotive
5	492	2	ABM Industries Incorporated	Janitorial	Janitorial
5	492	4	FCA	Parts Auto	Automotive
5	492	10	Curtiss-Wright Corp	Sensors	Other Manufacturing
5	492	11	Ford Motor Company	Parts	Automotive
5	492	12	Caravan Facilities Management	Janitorial	Janitorial
5	506	2	Northrop Grumman Corp	Aircraft Parts	Aerospace
5	506	4	Triumph Group Inc.	Accumulators	Aerospace
5	509	12	Parker Hannifin Corp	Defense	Aerospace
5	509	79	Trimas Corporation	Aircraft Parts	Defense
5	509	79	Trimas Corporation	Defense	Aerospace
5	509	96	Transdigm Inc.	Aircraft Parts	Defense
5	509	96	Transdigm Inc.	Defense	Aerospace
5	509	190	Western Tube & Conduit Corp	Metal Tubing	Other
5	509	196	Arconic Inc.	Aerospace	Aerospace
5	509	196	Arconic Inc.	Aircraft Parts	Aerospace
5	509	212	Woodward Inc.	Technical/Service Aircraft Market	Aerospace
5	509	212	Woodward Inc.	Technology	Aerospace
5	509	250	Senior Operations Inc.	Aerospace	Aerospace

Region	Local	Unit	Corporation	Product or Service	Category
5	509	250	Senior Operations Inc.	Aircraft Parts	Aerospace
5	509	286	Ford Motor Company	Ford Parts	Automotive
5	509	300	FCA	Test Track	Automotive
5	509	312	MillerCoors	Miller/Coors Beer	Food Manufacturing
5	509	316	National Retail Systems Inc.	Trucking	Trucking, Logistics, Warehousing
5	509	323	Ruan Transportation Management Systems	Trucking and Warehousing	Trucking, Logistics, Warehousing
5	509	324	UAW Local Union	Union Elected Officials	Union Staff
5	509	325	Revlon Inc.	Warehouse	Trucking, Logistics, Warehousing
5	509	329	ABM Industries Incorporated	Janitorial	Janitorial
5	509	330	Caravan Facilities Management	Janitorial	Janitorial
5	691	1	SKF	Grease Gun Kits	Other Manufacturing
5	710	11	Donaldson Company	Filtration	Other Manufacturing
5	710	78	Hollister Incorporated	Medical Equipment	Medical Equipment Manufacturing
5	710	88	Standard Motor Products Inc.	Auto Parts	Automotive
5	710	105	Woodbridge Group	Seat Foam	Automotive
5	710	106	American Food and Vending Corp	Cafeteria/Vending	Food Service
5	710	108	Garsite / Progress LLC	Fuel Tank	Automotive
5	710	110	Magna International Inc.	Car Seats	Automotive
5	710	111	Nitto Denko Corporation	Sound	Automotive
5	710	112	SVS Vision	Vision Care & Eyewear Provider	Healthcare
5	710	118	CEVA Logistics U.S. Inc.	Ford Parts	Trucking, Logistics, Warehousing
5	710	122	Syncreon International Group	Frames for F-150	Automotive
5	710	131	Dana Corporation	Rear End Parts	Automotive
5	710	132	Caravan Facilities Management	Janitorial	Janitorial
5	710	133	Adient Plc	Seats	Automotive
5	710	135	Piston Automotive LLC	Radiators F-150	Automotive
5	710	310	Challenge Mfg Company	Floor Pans	Automotive
5	766	1	Lockheed Martin Corporation	Satellite/GPS	Aerospace
5	766	1	Lockheed Martin Corporation	Satellite/GPS	Aerospace
5	766		SBM	Janitorial	Janitorial
5	816	16	Jones Lang Lasalle	Janitorial	Janitorial

Region	Local	Unit	Corporation	Product or Service	Category
5	848	1	Triumph Group Inc.	Aircraft	Aerospace
5	848	2	Lockheed Martin Corporation	Aircraft	Aerospace
5	848	3	Raytheon Company	Grounds Service	Defense
5	848	3	Raytheon Company		Defense
5	864	22	Ford Motor Company	Ford Parts	Automotive
5	864	26	ABM Industries Incorporated	Janitorial	Janitorial
5	864	27	Timken Company	Repair Gear Box	Automotive, Aerospace, Agricultural
5	870	1	Ford Motor Company	Ford Parts	Automotive
5	870	3	ABM Industries Incorporated	Janitorial	Janitorial
5	887	108	Aerojet Rocketdyne Holdings Inc.	Rockets	Aerospace
5	887	110	Boeing Company	Flight Testing	Aerospace
5	887	110	Boeing Company	Flight Testing	Aerospace
5	887	122	Aerojet Rocketdyne Holdings Inc.	Rockets	Aerospace
5	952	1	Spirit Aerosystems, Inc.		Aerospace
5	967	1	L3 Technologies Inc.	Overhaul multiple aircraft including Air forces RC-135	Aerospace
5	967	1	L3 Technologies Inc.	Product	Aerospace
5	1558	1	Spirit Aerosystems, Inc.	Boeing-Airbus	Aerospace
5	1762	3	DB&G	Bus Parts	Heavy Truck
5	1805	1	Folgers & Dunkin Donuts	Coffee	Food Manufacturing
5	1887	1	Mallinckrodt Plc	Pharmacy	Healthcare
5	1921	1	Lockheed Martin Corporation	Space Capsules	Aerospace
5	1921	2	S3	Facility Maintenance	Janitorial
5	1921		Madison/S3	Janitorial	Janitorial
5	1930	1	Psa Peugeot Citroen S.A.	Exhaust Systems	Automotive
5	2103	2	Sierra Club	Non-Profit Organization	Nonprofit
5	2103	3	Mother Jones Magazine	Mother Jones Magazine Staff	Publications/Books/ Book Stores
5	2162	2	General Motors Corporation	Auto Parts	Automotive
5	2162	4	Jones Lang Lasalle	Janitorial	Janitorial
5	2162	5	Navistar International Corp	Parts Distributor	Heavy Truck
5	2250	1	General Motors Corporation	Colorado, Canyon, Savannah, Express	Automotive
5	2250	3	Jones Lang Lasalle	Maintenance	Janitorial
5	2346	1	Lockheed Martin Corporation	Aerospace	Aerospace

Region	Local	Unit	Corporation	Product or Service	Category
5	2346	1	Lockheed Martin Corporation	Builds components for the Atlas 5 Rockets	Aerospace
5	2350	1	California State Employees Asc	Union Staff	Union Staff
5	2350	2	SEIU Local 1000	Union Staff	Union Staff
5	2360	1	FCA	Parts	Automotive
5	2360	2	FCA	Parts	Automotive
5	2360	3	Caravan Facilities Management	Janitorial	Janitorial
5	2366	1	Deere & Co	Farm Equipment	Agricultural
5	2379	1	ABB	Transformers	
5	2865	1	University of California	Graduate Employees	Higher Education
5	2865	2	University of California	Graduate Employees	Higher Education
5	2865	3	University of California	Graduate Employees	Higher Education
5	2865	4	University of California	Graduate Employees	Higher Education
5	2865	5	University of California	Graduate Employees	Higher Education
5	2865	6	University of California	Graduate Employees	Higher Education
5	2865	7	University of California	Graduate Employees	Higher Education
5	2865	8	University of California	Graduate Employees	Higher Education
5	2865	9	University of California	Graduate Employees	Higher Education
5	3057	1	General Cable Corporation	Cable Communication	Other
5	3555	1	Caesars Entertainment Corp	Gaming	Gaming
5	3555	2	Caesars Entertainment Corp	Gaming	Gaming
5	3555	3	Caesars Entertainment Corp	Gaming	Gaming
5	3555	4	Caesars Entertainment Corp	Gaming	Gaming
5	3555	6	Caesars Entertainment Corp	Gaming	Gaming
5	3555	7	Caesars Entertainment Corp	Gaming	Gaming
5	3555	8	Caesars Entertainment Corp	Gaming	Gaming
5	4121	1	University Of Washington	Graduate Employees	Higher Education
5	4123	1	California State University	Graduate Employees	Higher Education
5	5010	1	Navistar International Corp	Buses	Heavy Truck
5	5810	1	University Of California	Postdoctoral Researchers	Higher Education
5	5810	2	University Of California	Postdoctoral Researchers	Higher Education
5	5810	3	University Of California	Postdoctoral Researchers	Higher Education
5	5810	4	University Of California	Postdoctoral Researchers	Higher Education
5	5810	5	University Of California	Postdoctoral Researchers	Higher Education
5	5810	6	University Of California	Postdoctoral Researchers	Higher Education
5	5810	7	University Of California	Postdoctoral Researchers	Higher Education
5	5810	8	University Of California	Postdoctoral Researchers	Higher Education
5	5810	9	University Of California	Postdoctoral Researchers	Higher Education
5	5810	10	University Of California	Postdoctoral Researchers	Higher Education
5	5810	11	Lawrence Berkeley National Laboratory	Laboratory Workers	Higher Education

Region	Local	Unit	Corporation	Product or Service	Category
5	6645	1	General Motors Corporation	GM AC Delco Parts	Automotive
5	6645	2	General Motors Corporation	GM Delco Parts	Automotive
5	6645	3	Jones Lang Lasalle	Janitorial	Janitorial
5	6645	4	Jones Lang Lasalle	Janitorial	Janitorial



REGION 8

Region 8 covers the Southeast, including Tennessee, Kentucky, Virginia, West Virginia, North Carolina, South Carolina, Mississippi, Alabama, Georgia, and Florida, the District of Columbia, Maryland, Delaware and four Pennsylvania counties: Franklin, Cumberland, Adams, York.

Region	Local	Unit	Corporation	Product or Service	Category
8	10	2	Freightliner	Truck Parts Distribution	Heavy Truck
8	17	1	Horseshoe Casino	Casino Dealers	Gaming
8	42	1	CEVA Logistics	Transportation	Trucking, Logistics, Warehousing
8	171	1	Volvo	Heavy Truck Powertrain	Heavy Truck
8	171	2	ZCL Composites Inc.	Underground Storage	Construction
8	171	3	Valspar Corporation	Paint Resin	Paint
8	171	4	Volvo	Core Reman	Heavy Truck
8	239	1	General Motors Corporation	Automotive Powertrain	Automotive
8	239	5	Murray Corporation	Fastening Devises	Automotive
8	239	8	Jones Lang Lasalle	Janitorial	Janitorial
8	298	1	Raytheon Company	Military Communications	Defense
8	342	1	ZF Friedrichshafen AG	Valve Housing, Rack & Pinion	Automotive
8	472	19	Navistar	Truck Parts Distribution	Heavy Truck
8	472	38	Deere & Co	Agriculture Equipment Parts Distribution	Agricultural
8	472	54	Goodyear Tire & Rubber Co	Tires	Aerospace
8	472	71	Woodbridge Group	Foam Seats	Automotive
8	472	76	SVS Vision	Eye Glasses	Healthcare
8	523	1	Georgian American Alloys Inc	Crushed Stone	Automotive
8	737	5	Central Glass Co Ltd	Glass	Automotive
8	737	10	Fisk University Office	Clerical	Higher Ed
8	737	13	Central Glass Co Ltd	Glass	Automotive
8	738	1	Lockheed Martin Corporation	Airplane Parts	Aerospace
8	738	2	General Electric	Airplane Parts	Aerospace
8	788	1	Lockheed Martin Corporation	Missiles & Fire Control	Aerospace
8	788	2	Ford Motor Company	Automotive Parts Distribution	Automotive
8	788	3	American Building Maintenance	Janitorial	Janitorial
8	862	1	Ford Motor Company	Automotive Vehicles	Automotive
8	862	2	Leadec	Janitorial	Janitorial
8	862	3	Leadec	Janitorial	Janitorial
8	862	4	Ford Motor Company	Automotive Vehicles	Automotive
8	862	6	Nurses Lap	Nurses	Healthcare
8	862	7	Nurses Ktp	Nurses	Health Care
8	862	8	Union Sorters Of America	Sorting/Inspection	Automotive
8	868	1	Fiat & Chrysler Assembly	Automotive Parts Distribution	Automotive
8	868	3	Caravan Facilities Management	Janitorial	Janitorial
8	882	4	Ford Motor Company	Automotive Parts Distribution	Automotive
8	882	19	Berry Plastics Group	Poly Bag	Other Manufacturing

Region	Local	Unit	Corporation	Product or Service	Category
8	882	21	American Building Maintenance	Janitorial	Janitorial
8	912	1	Ingersoll-Rand Company Limited	Commercial Air Handler	Other Manufacturing
8	946	1	FCA	Automotive Parts Distribution	Automotive
8	1103	8	Highland Partners, L.P.	Extrusion Aircraft	Aerospace
8	1183	40	Brandywine School District	Bus Drivers	Public Sector
8	1183	46	Christina School District	Bus Drivers	Public Sector
8	1247	1	Volvo	Engineering	Heavy Truck
8	1296	1	Johnson Controls	Compressor Units	Other Manufacturing
8	1338	1	Solvay S.A.	Airplane Caulking	Aerospace
8	1407	1	Cummins Inc.	Filters	Automotive
8	1443	8	Amtech Systems Inc.	Precision Lapping and Polishing Machines	Other Manufacturing
8	1516	1	Johnson Controls	HVAC Chillers	Other Manufacturing
8	1542	1	Dassault Aviation Group	Airplane Repair	Aerospace
8	1590	1	General Motors Corporation	Automotive Parts Distribution	Automotive
8	1590	3	Jones Lang Lasalle	Janitorial	Janitorial
8	1617	1	Lear Corporation	Seat Components	Automotive
8	1639	1	Avic International Holding Corp	Small Aircraft Engines	Aerospace
8	1649	1	FCA	Automotive Parts Distribution	Automotive
8	1649	2	Caravan Facilities Management	Janitorial	Janitorial
8	1649	3	Ryder System Inc.	Transportation	Trucking, Logistics, Warehousing
8	1821	1	Lockheed Martin Corporation	Missiles & Fire Control	Aerospace
8	1853	1	General Motors Corporation	XT5, ACADIA	Automotive
8	1853	2	Leadec	Janitorial	Janitorial
8	1853	3	American Food and Vending Corp	Food, Vending	Food Service Manufacturing
8	1853	8	Ryder System Inc.	Transportation	Trucking, Logistics, Warehousing
8	1853	9	Magna International Inc.	Seats	Automotive
8	1853	10	Comprehensive Logistics Company Inc.	Suspensions, Headliners	Automotive
8	1872	1	Johnson Controls	HVAC Chillers	Other Manufacturing
8	1872	3	Navistar	Administrative	Heavy Truck
8	1872	5	Caterpillar Inc.	Agriculture Equipment Parts	Agricultural
8	1941	1	Faurecia Seating	Seat Frames	Automotive
8	1956	1	Siemens	Transformers & Storage Units	Other Manufacturing
8	1968	1	Charter Plc	Welding Products	Other Manufacturing

Region	Local	Unit	Corporation	Product or Service	Category
8	2069	1	Volvo	Heavy Truck	Heavy Truck
8	2069	2	Volvo (Salary Unit)	Engineers	Heavy Truck
8	2083	2	ZF Friedrichshafen AG	Axles	Automotive
8	2083	3	Inteva Products LLC	Cockpits	Automotive
8	2083	4	Yanfeng Automotive Trim Systems Co. Ltd	Injection Molded Parts	Automotive
8	2083	5	Faurecia Seating	Seats	Automotive
8	2083	6	Yanfeng Automotive Trim Systems Co. Ltd	Interior Parts	Automotive
8	2164	2	General Motors Corporation	Automotive Vehicles	Automotive
8	2164	9	Caravan Facilities Management	Janitorial	Janitorial
8	2278	1	Florida Education Association Broward County	Field Staff for County Teachers Union	Union Staff
8	2278	2	Florida Education Association Dade County	Field Staff for County Teachers Union	Union Staff
8	2278	3	Florida Education Association Doval County	Field Staff for County Teachers Union	Union Staff
8	2278	4	Florida Education Association Lake County	Field Staff and Clerical for County Teachers Union	Union Staff
8	2278	5	Florida Education Association Manatee County	Field Staff for County Teachers Union	Union Staff
8	2278	6	Florida Education Association Orange County	Field Staff for County Teachers Union	Union Staff
8	2278	7	Florida Education Association Palm Beach County	Field Staff for County Teachers Union	Union Staff
8	2278	8	Florida Education Association Pasco County	Clerical and Communicaton Staff for County Teachers Union	Union Staff
8	2278	9	Florida Education Association St. Lucie County	Field Staff and Clerical for County Teachers Union	Union Staff
8	2278	10	Florida Education Association Volosia County	Field Staff and Clerical for County Teachers Union	Union Staff
8	2301	1	Volvo	Administrative	Heavy Truck
8	2301	2	Volvo	Truck Parts Distribution	Heavy Truck
8	2303	1	Danaher Corporation	Wheel Balancers	Automotive
8	2306	1	Rocore Thermal Systems LLC	Oil Coolers	Automotive
8	2309	1	Brown Forman Corp	Whiskey Barrels	Food/Beverage
8	2314	1	Central Glass Co Ltd	Glass	Automotive
8	2383	1	Martinrea International Inc.	Metal Parts Stamping	Automotive
8	2386	1	International Auto Components	Headliners	Automotive
8	2402	1	General Motors Corporation	Automotive Parts Distribution	Automotive

Region	Local	Unit	Corporation	Product or Service	Category
8	2402	4	Jones Lang Lasalle	Janitorial	Janitorial
8	2404	1	General Motors Corporation	Automotive Parts Distribution	Automotive
8	2404	2	Deutsche Post Ag (Dhl)	Warehouse	Trucking, Logistics, Warehousing
8	2404	4	Jones Lang Lasalle	Janitorial	Janitorial
8	2406	1	General Motors Corporation	Automotive Parts Distribution	Automotive
8	2406	2	Freightliner	Truck Parts Distribution	Heavy Truck
8	2406	3	Volvo	Truck Parts Distribution	Heavy Truck
8	2406	4	Jones Lang Lasalle	Janitorial	Janitorial
8	2407	1	Rane (Madras) Ltd.	Aluminum Castings	Automotive
8	2409	1	Transtar Industries Inc.	Transmission Gears	Automotive
8	2420	1	Volvo	Truck Parts Distribution	Heavy Truck
8	2426	5	Planters Peanuts	Food Products	Food Manufacturing
8	2850	1	General Dynamics Corporation	Aircraft Parts	Aerospace
8	2926	3	Penske Corporation	Shipping	Trucking, Logistics, Warehousing
8	2999	1	International Auto Components	Interior Components	Automotive
8	3036	1	Ford Motor Company	Parts Warehouse	Automotive
8	3036	3	Archer Daniels Midland Co	Cottonseed Oil	Agricultural
8	3036	6	American Building Maintenance	Janitorial	Janitorial
8	3047	1	Grupo Proeza S.A. De C.V.	Frames	Automotive
8	3058	1	Dana Corporation	Driveshafts	Automotive
8	3058	2	Magna International Inc.	Seating	Automotive
8	3058	3	Dakkota Integrated Systems Llc	Bumpers, Grills, IP's	Automotive
8	3058	4	Waste Management	Container Repair	Automotive
8	3058	5	American Food and Vending Corp	Vending/Food Service	Food Service Manufacturing
8	3058	9	Faurecia Interiors	Interior Components	Automotive
8	3058	10	Piston Automotive LLC	Oil & Power Steering	Automotive
8	3062	1	Dana Corporation	Gaskets	Automotive
8	3063	1	Metalsa	Frames	Automotive
8	3064	1	Dana Corporation	Driveshafts	Automotive
8	3151	1	Wolverine Advanced Materials LLC	Gaskets	Automotive
8	3519	1	Ford Motor Company	Automotive Parts Distribution	Automotive
8	3520	1	Freightliner	Heavy Truck	Heavy Truck
8	3520	2	Freightliner	Pre-Delivery Inspection	Heavy Truck

Region	Local	Unit	Corporation	Product or Service	Category
8	3520	3	Ford Motor Company	Automotive Parts Distribution	Automotive
8	3520	5	Freightliner	Administrative	Heavy Truck
8	4616	1	Daifuku Co. Ltd.	Conveyor Systems	Other Manufacturing
8	4616	3	Bfc Fahrzeugteile Gmbh	Door Trim	Automotive
8	4700	1	Grupo Proeza S.A. De C.V.	Frames	Heavy Truck
8	5285	1	Freightliner	Heavy Truck	Heavy Truck
8	5285	3	Freightliner	Pre-Delivery Inspection	Heavy Truck
8	5286	1	Freightliner	Heavy Truck Parts	Heavy Truck
8	5287	1	Thomas Built Bus	School Bus	Heavy Truck
8	6520	1	Colomer USA	Cosmetics and Toiletries	Personal Care/ Cosmetics
8	8868	2	Boyd Gaming Corporation	Professional Jai-Alai Players	Gaming
8	8868	5	Florida Gaming Corporation	Professional Jai-Alai Players	Gaming
8	9025	1	Dana Corporation	Gaskets	Automotive



REGION 9

Region 9 covers western and central New York, New Jersey and Pennsylvania, excluding the counties of Franklin, Cumberland, Adams and York.

Region	Local	Unit	Corporation	Product or Service	Category
9	55	8	Bennett Manufacturing Company	Hospital Beds	Other Manufacturing
9	55	12	Maclean-Fogg Company		Automotive
9	55	33	Towne Buick Inc.		Automotive
9	55	104	Van Pelt Corporation	Steel Parts Various	Metals
9	55	144	Hard Manufacturing Company	Tier 1 and Tier 2 Hospital Beds and Cribs	Other Manufacturing
9	55	170	Keyser Brothers Cadillac		Automotive
9	55	176	Laks Motors Inc.		Automotive
9	55	188	Tmp Technologies	Foam Applicators	Other Manufacturing
9	55	190	Markin Tubing Lp		
9	55	205	UAW Local Union	Business Agents	Union Staff
9	55	208	Paddock Chevrolet		Automotive
9	55	209	Communication Workers of America	Secretaries	Union Staff
9	55	211	Communication Workers of America	Secretaries	Union Staff
9	55	218	American Images By Hillstar	Embroidery	Apparel
9	55	219	Bryant & Stratton College Inc.	Teachers/College Professors	Higher Education
9	55	220	SVS Vision	Vision Care & Eyewear Provider	Healthcare
9	55	221	ERS Industries Inc.	Refurbish Rail Cars	Railway
9	55	227	Kax Solutions and Services	Printers	Other Manufacturing
9	55	228	Communication Workers of America	Secretaries	Union Staff
9	55	229	Delaco Steel Corp	Cut Blanks	
9	55	230	Eastern Niagara Hospital	Psychiatric Counselors	Healthcare
9	55	231	Supplier Park Industries, LLC	Auto Gadgets	Automotive
9	55	232	Metal Cladding Inc.		Automotive
9	55	233	Perry's Ice Cream	Ice Cream	Food Manufacturing
9	55	234	Bryant & Stratton College Inc.	Librarians	Higher Education
9	55	809	Bryant & Stratton College Inc.	Teaching Professors	Higher Education
9	55	810	Town of Evans	Dispatchers	Public Sector
9	204	12	Hbd Industries Inc.	Prod. Workers	Automotive
9	204	14	Unity Township	Public Works	Public Sector
9	204	16	Salem Township	Public Works	Public Sector
9	204	18	Ligonier Township	Public Works	Public Sector
9	204	20	Sewickley Township	Public Works	Public Sector
9	204	28	Allegheny Ford Truck Sales	Mechanics	Auto Dealership/ Mechanics
9	204	32	Coll Tire Distributors	Tire Distributor	Automotive
9	204	35	Unity Township	Public Works	Public Sector
9	204	36	Reaxis Incorporated	Auto Parts	Automotive

Region	Local	Unit	Corporation	Product or Service	Category
9	204	38	Ligonier Township	Public Works	Public Sector
9	267	1	Breeze Eastern Corporation	Aircraft Hoists	Aerospace
9	338	1	SKF	Aircraft Machinery	Aerospace
9	465	1	General Motors Corporation		Automotive
9	481	1	Chassix Inc.	Automotive Parts	Automotive
9	502	1	Rbc Bearings Inc.	Automotive Bearings	Automotive
9	604	1	Motor Components LLC	Fuel Pumps	Other Manufacturing
9	629	1	Barnes Group Inc.	Auto/Aero Springs	Automotive, Aerospace
9	644	2	Dana Corporation		Automotive
9	644	4	Dana Corporation		Automotive
9	644	14	Seastar Solutions		Defense
9	644	16	U.S. Axle	Locomotive Axels	Other Manufacturing
9	644	42	Mountaintop Joint Sanitary	Public Works	Public Sector
9	677	1	Volvo	Office/Engineers	Automotive, Heavy Truck
9	677	2	Americold	Cold Storage and Refrigerated Warehousing	Trucking, Logistics, Warehousing
9	677	3	Volvo	Trucks	Heavy Truck
9	677	6	First Student	Bus Drivers/Maintenance	Public Sector
9	686	4	General Motors Corporation	HVAC, Condensers. Radiators	Automotive
9	686	35	General Motors Corporation	Nursing Unit	Healthcare
9	714	1	Fmc Technologies Incorporated	Pumps/Meters	
9	714	2	All-American Hose	Hoses/Fire	Other Manufacturing
9	714	3	Swanson Systems Incorporated	Stamping	
9	739	1	Reed Manufacturing Co	Plumbing Equipment	
9	774	1	General Motors Corporation		Automotive
9	774	3	Aramark Corporation	Cafeteria Employees	Food Service
9	774	4	Caravan Facilities Management	Janitorial	Janitorial
9	774	5	General Motors Corporation	Nurses/Aids	Healthcare
9	787	1	Textron Incorporated	Engines	Aerospace
9	787	2	Koppers Industries Inc.	Chemicals/Wood	Chemical Manufacturing
9	897	1	Ford Motor Company		Automotive
9	897	2	Devon Industrial Group	Janitorial	Janitorial
9	936	1	Eastman Machine Co	Milling Machine	Other
9	1039	1	Triumph Group Inc.		Aerospace
9	1060	1	Diemolding Corp	Automotive Parts	Automotive
9	1069	1	Boeing Company		Aerospace
9	1097	1	General Motors Corporation	Machinist/Assembly	Automotive
9	1097	2	General Motors Corporation	Nursing Professionals	Healthcare

Region	Local	Unit	Corporation	Product or Service	Category
9	1097	5	Coach & Equipment Mfg Corp	Bus Manufacturer	Heavy Truck
9	1097	8	Gardner Denver Inc.	Pumps	
9	1097	9	Caravan Facilities Management	Janitorial	Janitorial
9	1097	10	Monarch Machine Tool Company	Various Parts	
9	1098	1	Blue Ridge Pressure Castings Inc.		Automotive
9	1127	1	Caesars Entertainment Corp	Dealers	Gaming
9	1186	1	Accuride Corporation		Heavy Truck
9	1193	1	General Dynamics Corporation		Aerospace
9	1311	1	Thompson Creek Metals Company	Metals	Metals
9	1326	1	Danaher Corporation	Filtration/Cell/Auto	Automotive
9	1416	1	Danaher Corporation	Machine Parts	
9	1612	12	Honda Motor Company Ltd	Auto Parts	Automotive
9	1612	17	Ceco Environmental Corp	Technologies for Air Pollution Control, Energy, and Fluid Handling & Filtration.	Other Manufacturing
9	1612	19	Holman Automotive Group, Inc.	Auto Parts	Automotive
9	1612	26	L3 Technologies Inc.		Defense
9	1612	29	Warminster Fiberglass Co	Fiberglass	
9	1612	30	Ashland Chemical Co	Plastic	Other Manufacturing
9	1612	34	L3 Technologies Inc.	Mfg. Circuit Brkrs	Defense
9	1612	37	Spaulding Automotive	Auto Parts	Automotive
9	1612	38	Fbf Quick Timing	A/C Parts	Other Manufacturing
9	1612	39	Willig, Williams & Davidson	Secretaries	Legal
9	1612	43	Lower Bucks County Joint	Public Works	Public Sector
9	1612	46	Borough of Bristol	Public Works	Public Sector
9	1612	47	Borough of Bristol	Public Works	Public Sector
9	1612	50	Bristol Aluminum Co	Mfg. Aluminum	Metals
9	1612	54	United Envelope LLC	Paper	Other Manufacturing
9	1612	55	Bridon International Ltd	Wire Rope	Other Manufacturing
9	1612	57	Medford Township	Public Works	Public Sector
9	1612	58	Borough of Tamaqua	Public Works	Public Sector
9	1612	60	Women Against Abuse Inc.	Counselors	Nonprofit
9	1612	62	Bloomfield Board Of Education	Public Works	Public Sector
9	1799	1	Commercial Bank & Trust Of Pa	Bank Tellers and Hourly Employees	Financial
9	2177	1	General Motors Corporation	Automotive Parts	Automotive
9	2177	2	Jones Lang Lasalle	Warehouse	Automotive

Region	Local	Unit	Corporation	Product or Service	Category
9	2210	1	Ford Motor Company	Automotive Parts	Automotive
9	2231	1	Titanx Engine Cooling, Inc.	Clerical/Inspectors	Heavy Truck
9	2255	1	ABB	Parts	Other Manufacturing
9	2300	1	Cornell University	Service Employees	Higher Education
9	2300	3	Ithaca Housing Authority	Public Works	Public Sector
9	2300	7	Tompkins County	Professional Staff	Public Sector
9	2300	12	Tompkins County	Staff	Public Sector
9	2300	15	Finger Lakes Library System	Library Staff	Public Sector
9	2300	17	UAW Local Union	Full Time Staff	Union Staff
9	2300	18	Tompkins Consolidated Area Transit	Public Bus Operators and Mechanics	Public Sector
9	2300	19	SCLIWC	Public Works	Public Sector
9	2326	19	Bell Container Corporation	Boxes	Packaging
9	2326	21	Darling Ingredients Inc.	Grease Removal	
9	2326	24	Belden Inc.	Wiring	Other Manufacturing
9	2326	26	State Container Corp	Corrugated Boxes	Packaging
9	2326	49	Township of Edison	Public Works	Public Sector
9	2326	55	Manchester Regional High Schooll	Janitorial	Public Sector
9	2326	58	Westrock Company	Corrugated Boxes	Packaging
9	2326	61	Princeton University Store	Bookstore Employees	Higher Education
9	2326	62	Borough of Little Ferry NJ	Public Works	Public Sector
9	2326	63	Vernon Township	Public Works	Public Sector
9	2326	66	Titan Outdoor, LLC	Warehouse Employees for Advertising Supplies	Trucking, Logistics, Warehousing
9	2326	73	Hi-Pro Industries, Inc.	Corrugated Boxes	Packaging
9	2326	76	Westrock Company	Corrugated Boxes	Packaging
9	2326	77	Lanco York Inc.	Auto Parts	Automotive
9	2326	78	G&O Manufacturing	Corrugated Boxes	Packaging
9	2326	79	Nekoosa Coated Products LLC	Advertising Tape	Other Manufacturing
9	2326	88	Cosmetic Essence LLC	Perfume bottles	Personal Care/ Cosmetics
9	2326	93	Durex Industries	Parts	
9	2326	94	Atlantic Casting & Eng Corp	Metal Molds	Metals
9	2326	95	Dimensional Management Systems	Dental Staff	Healthcare
9	2326	96	Community Financial Svcs Fcu	Credit Union Staff	Financial
9	2326	97	General Aviation & Elec Mfg Co	Aero Parts	Aerospace
9	2326	99	Genuine Parts Company	Auto Parts	Automotive

Region	Local	Unit	Corporation	Product or Service	Category
9	2326	100	Short Run Stamping Company Inc	Metal Stamping	Metals
9	2326	101	Andersen Corporation	Windows	Home Products/Tools Manufacturing
9	2326	102	Rebco Inc.	Warehouse Employees for Advertising Supplies	
9	2326	105	Eyedx Len Outlet	Professional Practice	Healthcare
9	2326	106	Borough of Roselle Park NJ	Public Works	Public Sector
9	2326	107	Borough of Roselle Park NJ	Public Works	Public Sector
9	2326	108	Paper Mart Inc.	Corrugated Boxes	Packaging
9	2326	109	Penske Corporation	Warehouse Employees	Trucking, Logistics, Warehousing
9	2326	122	L3 Technologies Inc.		Aerospace
9	2326	123	System Freight Inc.	Truck Drivers - Delivery Service	Trucking, Logistics, Warehousing
9	2326	126	Synray Corporation	Paint	Paint
9	2326	127	UAW Local Union	FT Local Staff	Union Staff
9	2327	6	Cumberland County Guidance Center	Hourly Office Workers	Public Sector
9	2327	8	Carneys Point Care Center	Nurses/Aids	Healthcare
9	2327	11	Elwyn Incorporated	Public Works	Public Sector
9	2327	13	Whibco	Sand and Gravel	Construction
9	2327	26	Cumberland Manor Nursing & REH	Nurses/Aids	Healthcare
9	2327	27	City of Cape May	Public Works	Public Sector
9	2327	28	City of Wildwood	Public Works	Public Sector
9	2327	29	Cumberland County	Public Works	Public Sector
9	2327	30	Vineland Board Of Education	Clerical	Public Sector
9	2327	31	Middle Township	Public Works	Public Sector
9	2327	32	Cumberland County	Public Works	Public Sector
9	2327	33	Upper Deerfield Township	Public Works	Public Sector
9	2327	34	City of Cape May	Public Works	Public Sector
9	2367	1	Revere Copper Products Inc.	World Copper	Other Manufacturing
9	2412	1	Precision Castparts Corporation	Metals	Metals
9	2571	1	Tulip Corporation	Battery Cases	Other Manufacturing
9	3039	1	FCA	Warehouse	Automotive
9	3170	1	Caesars Entertainment Corp	Dealers/Slot Techs	Gaming
9	3300	1	Erie Community College	Administrative	Higher Education
9	3303	1	A K Steel Corporation	Steel Production	Automotive
9	8275	1	Kmart	Warehouse/Drivers	Trucking, Logistics, Warehousing
9	8888	1	Tropicana Entertainment, Inc.	Dealers/Slot Techs	Gaming



REGION 9A

Region 9A covers eastern New York (including the New York City metropolitan area, the Hudson Valley and the Capital District area), Connecticut, Massachusetts, Rhode Island, New Hampshire, Vermont, Maine and Puerto Rico.

Region	Local	Unit	Corporation	Product or Service	Category
9A	259	16	IEH Corporation	Hyperboloid Connectors	Other
9A	259	58	Newins Bayshore Ford Inc.	Auto Technicians	Auto Dealership/ Mechanics
9A	259	297	Manhattan Jeep Chrysler Dodge, Inc.	Auto Technicians	Auto Dealership/ Mechanics
9A	259	313	Manhattan Foreign Auto	Auto Technicians	Auto Dealership/ Mechanics
9A	259	751	Major Nissan	Auto Technicians	Auto Dealership/ Mechanics
9A	259	853	Metro Chrysler-Plymouth Jeep	Auto Technicians	Auto Dealership/ Mechanics
9A	259	864	Herbee Motors	Auto Technicians	Auto Dealership/ Mechanics
9A	259	866	Gregoris Motors Inc.	Auto Technicians	Auto Dealership/ Mechanics
9A	259	868	Rockville Centre	Auto Technicians	Auto Dealership/ Mechanics
9A	259	872	Chaumont Motors	Auto Technicians	Auto Dealership/ Mechanics
9A	259	875	Bical Chevrolet	Auto Technicians	Auto Dealership/ Mechanics
9A	259	876	Ford Lincoln Of Huntington	Auto Technicians	Auto Dealership/ Mechanics
9A	259	879	Audi Manhattan	Auto Technicians	Auto Dealership/ Mechanics
9A	259	880	Baron Brothers Auto Group	Auto Technicians	Auto Dealership/ Mechanics
9A	259	883	Honda Of Valley Stream	Auto Technicians	Auto Dealership/ Mechanics
9A	259	884	Sun Pontiac-GMC	Auto Technicians	Auto Dealership/ Mechanics
9A	259	885	Babylon Cars Inc.	Auto Technicians	Auto Dealership/ Mechanics
9A	259	898	Poly-Version Inc.	Auto Technicians	Auto Dealership/ Mechanics
9A	259	900	Albert & Jack, Inc.	Auto Technicians	Auto Dealership/ Mechanics
9A	259	901	Bmw Of Manhattan Inc.	Auto Technicians	Auto Dealership/ Mechanics
9A	259	902	B&Z Auto Enterprise	Auto Technicians	Auto Dealership/ Mechanics
9A	259	903	Premier Ford Lincoln	Auto Technicians	Auto Dealership/ Mechanics

Region	Local	Unit	Corporation	Product or Service	Category
9A	259	904	Brooklyn Motor Cars Inc.	Auto Technicians	Auto Dealership/ Mechanics
9A	259	905	Mcmahon Ford LLC	Auto Technicians	Auto Dealership/ Mechanics
9A	259	906	Nielsen Chevrolet	Auto Technicians	Auto Dealership/ Mechanics
9A	259	907	Stamford Ford Lincoln LLC	Auto Technicians	Auto Dealership/ Mechanics
9A	259	908	Infiniti Of Massapequa	Auto Technicians	Auto Dealership/ Mechanics
9A	259	909	Bay Ridge Automotive Co	Auto Technicians	Auto Dealership/ Mechanics
9A	259	910	Potamkin USA	Auto Technicians	Auto Dealership/ Mechanics
9A	259	911	Potamkin Of Manhattan	Auto Technicians	Auto Dealership/ Mechanics
9A	259	912	Audi Lynbrook	Auto Technicians	Auto Dealership/ Mechanics
9A	259	913	Sarant Cadillac Corporation	Auto Technicians	Auto Dealership/ Mechanics
9A	259	914	Manfredi Chevrolet Inc.	Auto Technicians	Auto Dealership/ Mechanics
9A	259	915	Great Neck Nissan	Auto Technicians	Auto Dealership/ Mechanics
9A	259	916	Ford Lincoln Of Queens	Auto Technicians	Auto Dealership/ Mechanics
9A	259	917	Platinum Volkswagen	Auto Technicians	Auto Dealership/ Mechanics
9A	259	918	Paul Conte Chevrolet	Auto Technicians	Auto Dealership/ Mechanics
9A	259	919	East Hills Chrysler Jeep Dodge	Auto Technicians	Auto Dealership/ Mechanics
9A	259	920	Westbury Toyota Scion	Auto Technicians	Auto Dealership/ Mechanics
9A	259	922	South Shore Motors	Auto Technicians	Auto Dealership/ Mechanics
9A	259	924	Town Motors Englewood	Auto Technicians	Auto Dealership/ Mechanics
9A	259	925	Biener Audi	Auto Technicians	Auto Dealership/ Mechanics
9A	259	926	Smithtown Toyota	Auto Technicians	Auto Dealership/ Mechanics
9A	259	928	Patchogue 112 Motors LLC	Auto Technicians	Auto Dealership/ Mechanics

Region	Local	Unit	Corporation	Product or Service	Category
9A	259	929	UAW Local Union	Auto Technicians	Union Staff
9A	259	930	Jefferson Auto Repair Inc.	Auto Technicians	Auto Dealership/ Mechanics
9A	259	931	Storms Ford Lincoln	Auto Technicians	Auto Dealership/ Mechanics
9A	259	933	Legend Nissan	Auto Technicians	Auto Dealership/ Mechanics
9A	259	934	Kristal Auto Mall	Auto Technicians	Auto Dealership/ Mechanics
9A	259	935	Jaguar Land Rover Manhattan	Auto Technicians	Auto Dealership/ Mechanics
9A	259	936	Sunrise Toyota	Auto Technicians	Auto Dealership/ Mechanics
9A	259	937	Kings County Chrysler Jeep	Auto Technicians	Auto Dealership/ Mechanics
9A	365	28	Multiple Employers		Other
9A	365	30	Pall Corp	Filtration/Purification Products	Other Manufacturing
9A	365	34	Potdevin Machine Co	Gluing, Labeling, Laminating Equipment	Other Manufacturing
9A	365	74	Saint Gobain	Construction Materials	Construction
9A	365	90	Cecilware Corp	Beverage & Food Service Machines	Food Service Manufacturing
9A	365	98	Insulation Materials Distribution		
9A	365	104	Aeroflex Laboratories	Research & Development	Other
9A	365	126	Ross (Charles) & Son Company	Industrial Equipment	Other Manufacturing
9A	365	140	Acoustical Ceiling Accessories	Acoustical Materials, Drywall Supplies	Construction
9A	365	146	Kaplan Bros Blue Flame Corp	Wholesale Distribution of Electrical Appliances & TVs	Trucking, Logistics Warehousing
9A	365	148	Triangle Aviation Services Inc.	Aviation Support Services	Aerospace
9A	365	160	Truck King International	Trucking Company	Trucking, Logistics, Warehousing
9A	365	174	Ross Metal Fabricators	Industrial Mixers	Other Manufacturing
9A	365	188	ABC Body & Trailer	Repair Service	Other
9A	365	190	Apa Warehouse, Inc.	Trucking Storage Services	Trucking, Logistics Warehousing
9A	365	192	Salem Truck Leasing Co	Truck Leasing	Other
9A	365	196	Airway Maintenance Inc.	Building Cleaning & Maintenance	Janitorial

Region	Local	Unit	Corporation	Product or Service	Category
9A	365	197	ACA Quality Building Products	Building Materials Supplier	Construction
9A	376	2	Abbott Ball Company	Precision Balls/Ball Bearings	Home Products/ Tools Manufacturing
9A	376	8	Colt's Mfg Company	Firearms	Other Manufacturing
9A	376	42	RBC Bearings Inc.		Other Manufacturing
9A	376	86	Amphenol Corporation	Coaxial Transmission Line Technology and Production	Other Manufacturing
9A	376	90	Success Village Apartmets	Maintenance Workers	Other
9A	376	123	Sodexo	Custodial	Janitorial
9A	376	124	University of Hartford	Janitorial and Grounds Maintenance	Higher Education
9A	376	125	Conn Citizen Action Group	Non-Profit Organizing Group	Nonprofit
9A	376	129	Stamford Taxi, Inc.	Taxi Drivers	Taxi Drivers
9A	376	136	Treadwell Corporation	Designs and builds Oxygen Generation Equipment	Defense
9A	376	143	Rostra Vernatherm LLC	Manufacturer of Thermal Actuators	Other Manufacturing
9A	376	145	A&D Components	Miscellaneous Parts	Other
9A	376	154	Bass Plating Company	Plating Operation	Metals
9A	376	155	United Abrasives	Grinding Wheels	Other Manufacturing
9A	376	160	Congress Of Conn Comm Colleges	Professional Staff	Higher Education
9A	376	162	Community Renewal Team, Inc.	Daycare/Head Start	Child Care
9A	376	163	Childcare Learning Centers	Daycare/Head Start	Child Care
9A	376	164	Women And Families Center		Nonprofit
9A	376	166	Stamford Yellow Cab	Taxi Drivers	Taxi Drivers
9A	376	167	Town of Plymouth	Food Service	Public Sector
9A	376	168	Hartford Technologies, Inc.	Precision Ball and Custom Bearing Manufacturer	Other Manufacturing
9A	376	170	Ford Motor Company	Parts Depot	Automotive
9A	376	171	Pactiv Corporation	Manufacturer of Disposable Food Packaging	Packaging
9A	376	172	Stratford Board Of Education	Office Staff	Public Sector
9A	376	173	Plymouth Board Of Education	Paraprofessionals	Public Sector
9A	376	174	Town of Plymouth	Office Staff	Public Sector
9A	379	1	Danaher Corporation	Truck Air Brakes	Heavy Truck
9A	405	2	Triumph Group Inc.	Aircraft Fuel Pumps	Aerospace
9A	422	5	FCA	Auto Parts Distribution	Automotive
9A	422	31	County of Worcester, Mass	County Jail	Public Sector

Region	Local	Unit	Corporation	Product or Service	Category
9A	422	34	Caravan Facilities Management	Janitorial	Janitorial
9A	571	1	General Dynamics Corporation	Designers of Submarines	Defense
9A	571	2	Computer Sciences Corp	Designers of Submarines	Defense
9A	712	1	Barnes Group Inc.	Transmission Washers	Other Manufacturing
9A	712	2	Theis Precision Steel Corp	Sheet Steel	Metals
9A	1508	1	Honeywell International	Brake Systems	Aerospace
9A	1596	6	Genuine Parts Company	Auto Parts	Automotive
9A	1596	10	Lytron Incorporated	Cooling Systems	Other Manufacturing
9A	1596	14	Marlborough Foundry Inc.	Aluminum Castings	Other Manufacturing
9A	1596	62	Town of Ashland	Community Services	Public Sector
9A	1596	63	Truck Equipment Boston Inc.		Trucking, Logistics Warehousing
9A	1596	64	Brockton Day Nursery	Child Care	Child Care
9A	1596	65	Brookline Booksmith Corporation	Books	Publications/ Books/Bookstores
9A	1596	67	City of Cambridge	Child Care	Child Care
9A	1596	68	Cape Cod Child Development Program	Child Care	Child Care
9A	1596	73	Early Learning Child Care Inc.	Child Care	Child Care
9A	1596	78	Harvard Book Store	Books/Clothing/Accessories	Publications/ Books/Bookstores
9A	1596	79	Botanic Gardens Childrens Ctr	Child Care	Child Care
9A	1596	80	Haymarket Peoples Fund	Community Grants	Nonprofit
9A	1596	82	Infants & Other People	Child Care	Child Care
9A	1596	85	La Alianza Hispanic, Inc.	Community Organization	Nonprofit
9A	1596	86	Mirror Image Inc.	Custom Silk Screening	Printing/Apparel/ Promotional Goods
9A	1596	90	Pace Inc-Head Start	Child Care	Child Care
9A	1596	91	Red Sun Press	Printed Materials	Publications/ Books/Book Stores
9A	1596	94	Somerville School Committee	Adult Education	Public Sector
9A	1596	96	Tri-City Community Action Program		Nonprofit
9A	1596	97	Tri-City Community Action Program		Nonprofit
9A	1596	98	Northstar Learning Center	Child Care	Child Care
9A	1596	100	Wareham Early Childhood Education & Development	Child Care	Child Care

Region	Local	Unit	Corporation	Product or Service	Category
9A	1596	103	University of Massachusetts	Adjunct Faculty	Higher Education
9A	1596	104	Pentair Ltd	Valves, Actuators & Regulators	Other Manufacturing
9A	1596	106	UAW Local Union	Union Admin	Union Staff
9A	1596	108	Transdev	School Bus Mechanics	School Bus Mechanics
9A	1596	109	Job Options, Inc.	Child Care	Child Care
9A	1596	112	Barnstable County	Registry of Deeds	Public Sector
9A	1596	115	University of Massachusetts	Grad Employees	Higher Education
9A	1596	116	Free Software Foundation Inc.	Computer Software	Other
9A	1596	121	University of Massachusetts	Teaching & Research Assts.	Higher Education
9A	1596	122	Bristol County	Registry of Deeds	Public Sector
9A	1850	2	Association De Empleados Ela	Credit Union	Financial
9A	1981	1	National Writers Unon	Writers, Authors	Writers, Authors
9A	1981	2	National Writers Unon	Writers, Authors	Writers, Authors
9A	1981	3	National Writers Unon	Writers, Authors	Writers, Authors
9A	1981	4	National Writers Unon	Writers, Authors	Writers, Authors
9A	1981	5	National Writers Unon	Writers, Authors	Writers, Authors
9A	1981	14	National Writers Unon	Writers, Authors	Writers, Authors
9A	1981	15	National Writers Unon	Writers, Authors	Writers, Authors
9A	1981	16	National Writers Unon	Writers, Authors	Writers, Authors
9A	1981	17	National Writers Unon	Writers, Authors	Writers, Authors
9A	2110	1	American Civil Liberties Union	Civil Rights Legal Guidance	Nonprofit
9A	2110	5	National Council Of Churches	Office Staff	Nonprofit
9A	2110	6	Barnard College	Office Staff	Higher Education
9A	2110	9	Columbia University	Office Staff	Higher Education
9A	2110	13	Good Old Lower East Side	Community Services	Nonprofit
9A	2110	14	Harper Collins Publishers	Writers, Authors	Publications/ Books/Book Stores
9A	2110	15	Monthly Review Foundation, Inc.	Magazine	Publications/ Books/Book Stores
9A	2110	17	New York Civil Liberties Union	Civil Rights Legal Guidance	Nonprofit
9A	2110	18	New York Historical Society	Office Staff	Nonprofit
9A	2110	22	Museum Of Modern Art	Office Staff	Museum
9A	2110	23	Rabinowitz Boudin	Lawyers	Legal
9A	2110	25	Teachers College	Office Staff	Higher Education
9A	2110	28	Union Theological Seminary	Office Staff	Higher Education
9A	2110	32	Village Voice Media Holdings	Newspaper	Publications/ Books/Book Stores

Region	Local	Unit	Corporation	Product or Service	Category
9A	2110	43	Hearst Corporation	Periodicals	Publications/ Books/Book Stores
9A	2110	44	Mercy College	Office Staff	Higher Education
9A	2110	45	Addison Wesley Longman, Inc.	Office Staff	Legal
9A	2110	52	State Bank Of India	Bank employees	Financial
9A	2110	53	New York University	Adjuncts, Graduate Workers	Higher Education
9A	2110	54	The New Press	Publishing	Publications/ Books/Book Stores
9A	2110	55	Bronx Museum of the Arts	Office Staff	Museum
9A	2110	57	New York State Housing Finance	Office Staff	Public Sector
9A	2110	58	New York State Housing Finance	Office Staff	Public Sector
9A	2110	59	New York State Mortgage Agency	Office Staff	Public Sector
9A	2110	61	Multiple employers		Other
9A	2121	2	Mashantucket Pequot Tribal Nation	Casino	Gaming
9A	2179	114	Franco American Novelty Comp	Costume Manufacturer	Apparel
9A	2179	117	Lerman Brothers, Inc.	Office Equipment Distribution	Trucking, Logistics Warehousing
9A	2179	129	Weinstock Brothers Corporation	Metal Products Supplier	Other Manufacturing
9A	2179	132	Direct Mail Master Cont Assn	Printing and Mailers	Printing/Apparel Promotional Goods
9A	2179	135	Direct Mail Master Cont Assn	Mailhouse & Custom Banners	Printing/Apparel Promotional Goods
9A	2179	153	Fineline Thermographers	Printing Service	Printing/Apparel Promotional Goods
9A	2179	165	Labor Research Association	Nonprofit Labor Movement Research	Nonprofit
9A	2179	234	Charter Fabrics Acquisition Co	Textile Converters	Textiles
9A	2179	243	Steelcase, Inc.	Office Furniture Manufacturing	Furniture Manufacturing
9A	2179	264	Gilmore Trading Co, Inc.	Fabric Wholesaler	Textiles
9A	2179	291	Liba Fabrics Corp	Textile Converters	Other
9A	2179	297	Lucerene Textile Co	Textile Converters	Textiles
9A	2179	315	Oriole Textile Company, Inc.	Textile Converters	Textiles
9A	2179	321	Blue Star Silk Corporation	Textile Converters	Textiles

Region	Local	Unit	Corporation	Product or Service	Category
9A	2179	348	Spechler-Vogel Textiles	Textile Converters	Textiles
9A	2179	387	Agh Trimsources Inc.	Trim Supplier	Textiles
9A	2179	399	All-In-One Supplies	Supplier of Store Fixtures & Displays	Other
9A	2179	432	Guide Fabrics	Textile Converters	Textiles
9A	2179	474	Steinlavf & Stroller	Sewing Supplies	Textiles
9A	2179	552	American Multi-Cinema, Inc.	Ushers & Concessions	Entertainment
9A	2179	561	Strand Book Co	Booksellers	Publications/ Books/Bookstores
9A	2179	564	Lord & Taylor	Seamstresses	Textiles
9A	2179	572	UAW Local Union	Office Staff	Union Staff
9A	2179	591	Guide Dog Foundation for the Blind, Inc.	Canine Trainers	Nonprofit
9A	2179	593	Stone Enterprises, Inc.	Promotional Products, Advertising Specialties and Business Gifts	Printing/Apparel Promotional Goods
9A	2179	594	Lowenstein (Jos H) & Sons	Paint Manufacturers	Other Manufacturing
9A	2179	595	Polytex Environmental Ink Ltd	Ink Supplier	Other
9A	2179	602	Ahuja Partnership Architect	Architectural, Planning, & Interior Design Service to major city & state agencies	Other
9A	2179	606	Townsend Dental Practice	Dental Office	Healthcare
9A	2179	607	Paramount Textiles Inc.	Textile Converters	Textiles
9A	2179	612	Barge Inn	Restaurant	Food Service
9A	2179	623	Island Sewing Supplies Inc.	Trim supplier	Textiles
9A	2179	625	National Amusements Inc.	Billboards on Busses & Subway	Other
9A	2179	626	Circle Visual Inc.	Fabric Supplier and Installer	Other
9A	2312	1	Hospital Pavia Hato Rey	Hospital Nurses	Healthcare
9A	2319	1	Municipio De Nar		
9A	2320	24	NOLSW	Legal Services	Legal
9A	2320	35	NOLSW	Legal Services	Legal
9A	2320	40	NOLSW	Legal Services	Legal
9A	2320	50	NOLSW	Legal Services	Legal
9A	2320	65	NOLSW	Legal Services	Legal
9A	2320	75	NOLSW	Legal Services	Legal
9A	2320	80	NOLSW	Legal Services	Legal
9A	2320	85	NOLSW	Legal Services	Legal
9A	2320	95	NOLSW	Legal Services	Legal
9A	2320	110	NOLSW	Legal Services	Legal
9A	2320	120	NOLSW	Legal Services	Legal
9A	2320	125	NOLSW	Legal Services	Legal

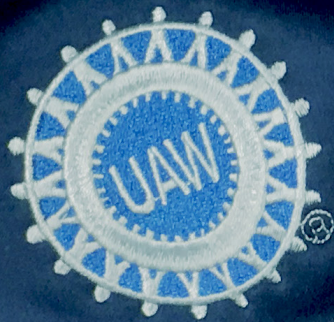
Region	Local	Unit	Corporation	Product or Service	Category
9A	2320	140	NOLSW	Legal Services	Legal
9A	2320	155	NOLSW	Legal Services	Legal
9A	2320	175	NOLSW	Legal Services	Legal
9A	2320	195	NOLSW	Legal Services	Legal
9A	2320	200	NOLSW	Legal Services	Legal
9A	2320	205	NOLSW	Legal Services	Legal
9A	2320	235	NOLSW	Legal Services	Legal
9A	2320	245	NOLSW	Legal Services	Legal
9A	2320	260	NOLSW	Legal Services	Legal
9A	2320	265	NOLSW	Legal Services	Legal
9A	2320	280	NOLSW	Legal Services	Legal
9A	2320	285	NOLSW	Legal Services	Legal
9A	2320	290	NOLSW	Legal Services	Legal
9A	2320	295	NOLSW	Legal Services	Legal
9A	2320	305	NOLSW	Legal Services	Legal
9A	2320	310	NOLSW	Legal Services	Legal
9A	2320	315	NOLSW	Legal Services	Legal
9A	2320	320	NOLSW	Legal Services	Legal
9A	2320	325	NOLSW	Legal Services	Legal
9A	2320	345	NOLSW	Legal Services	Legal
9A	2320	355	NOLSW	Legal Services	Legal
9A	2320	360	NOLSW	Legal Services	Legal
9A	2320	365	NOLSW	Legal Services	Legal
9A	2320	370	NOLSW	Legal Services	Legal
9A	2320	375	NOLSW	Legal Services	Legal
9A	2320	390	NOLSW	Legal Services	Legal
9A	2320	400	NOLSW	Legal Services	Legal
9A	2320	410	NOLSW	Legal Services	Legal
9A	2320	430	NOLSW	Legal Services	Legal
9A	2320	435	NOLSW	Legal Services	Legal
9A	2320	440	NOLSW	Legal Services	Legal
9A	2320	445	NOLSW	Legal Services	Legal
9A	2320	455	NOLSW	Legal Services	Legal
9A	2320	465	NOLSW	Legal Services	Legal
9A	2320	470	NOLSW	Legal Services	Legal
9A	2320	475	NOLSW	Legal Services	Legal
9A	2320	480	NOLSW	Legal Services	Legal
9A	2320	490	NOLSW	Legal Services	Legal
9A	2320	495	NOLSW	Legal Services	Legal
9A	2320	500	NOLSW	Legal Services	Legal
9A	2320	510	NOLSW	Legal Services	Legal

Region	Local	Unit	Corporation	Product or Service	Category
9A	2320	515	NOLSW	Legal Services	Legal
9A	2320	520	NOLSW	Legal Services	Legal
9A	2320	525	NOLSW	Legal Services	Legal
9A	2320	529	NOLSW	Legal Services	Legal
9A	2320	530	NOLSW	Legal Services	Legal
9A	2320	531	NOLSW	Legal Services	Legal
9A	2320	532	NOLSW	Legal Services	Legal
9A	2320	533	NOLSW	Legal Services	Legal
9A	2320	534	NOLSW	Legal Services	Legal
9A	2320	535	NOLSW	Legal Services	Legal
9A	2320	536	NOLSW	Legal Services	Legal
9A	2320	539	NOLSW	Legal Services	Legal
9A	2320	540	NOLSW	Legal Services	Legal
9A	2320	541	NOLSW	Legal Services	Legal
9A	2320	543	NOLSW	Legal Services	Legal
9A	2320	544	NOLSW	Legal Services	Legal
9A	2320	545	NOLSW	Legal Services	Legal
9A	2320	546	NOLSW	Legal Services	Legal
9A	2320	547	NOLSW	Legal Services	Legal
9A	2320	549	NOLSW	Legal Services	Legal
9A	2320	551	NOLSW	Legal Services	Legal
9A	2320	552	NOLSW	Legal Services	Legal
9A	2320	555	NOLSW	Legal Services	Legal
9A	2320	557	NOLSW	Legal Services	Legal
9A	2320	558	NOLSW	Legal Services	Legal
9A	2320	559	NOLSW	Legal Services	Legal
9A	2320	560	NOLSW	Legal Services	Legal
9A	2320	561	NOLSW	Legal Services	Legal
9A	2320	562	NOLSW	Legal Services	Legal
9A	2320	563	NOLSW	Legal Services	Legal
9A	2320	565	NOLSW	Legal Services	Legal
9A	2320	567	NOLSW	Legal Services	Legal
9A	2320	569	NOLSW	Legal Services	Legal
9A	2320	570	NOLSW	Legal Services	Legal
9A	2320	571	NOLSW	Legal Services	Legal
9A	2320	573	NOLSW	Legal Services	Legal
9A	2320	575	NOLSW	Legal Services	Legal
9A	2320	576	NOLSW	Legal Services	Legal
9A	2320	577	NOLSW	Legal Services	Legal
9A	2320	578	NOLSW	Legal Services	Legal
9A	2320	579	NOLSW	Legal Services	Legal

Region	Local	Unit	Corporation	Product or Service	Category
9A	2320	580	NOLSW	Legal Services	Legal
9A	2320	581	NOLSW	Legal Services	Legal
9A	2320	582	NOLSW	Legal Services	Legal
9A	2320	583	NOLSW	Legal Services	Legal
9A	2320	584	NOLSW	Legal Services	Legal
9A	2320	585	NOLSW	Legal Services	Legal
9A	2320	586	NOLSW	Legal Services	Legal
9A	2320	587	NOLSW	Legal Services	Legal
9A	2320	588	NOLSW	Legal Services	Legal
9A	2320	589	NOLSW	Legal Services	Legal
9A	2320	590	NOLSW	Legal Services	Legal
9A	2320	591	NOLSW	Legal Services	Legal
9A	2322	3	Nonotuck Community School	Child Care and Pre-School	Child Care
9A	2322	6	Servicenet Inc.	Behavioral Health Services, Adolescent Support Groups, Rehab and Residential Programs, Housing Services for the Homeless	Healthcare
9A	2322	8	Northeast Ctr Youth & Families	Services for At-Risk Children and Families	Nonprofit
9A	2322	9	University of Massachusetts	Graduate Teaching and Research Assistants, Residential Assistants, Peer Mentors	Higher Education
9A	2322	11	Cutchins Prog for Child & Fami	Emotional Disability Services for Children and Adolescents	Healthcare
9A	2322	12	Cutchins Prog For Child & Fami	Emotional Disability Services for Children and Adolescents	Healthcare
9A	2322	13	Square One	Early Childhood Education	Child Care
9A	2322	15	UAW Local Union	Staff	Union Staff
9A	2322	17	Western Massachusetts COSH	Health & Safety Information, Training./Technical Assistance to Workers	Nonprofit
9A	2322	18	Springfield Partners for Community Action	Early Childhood Education	Child Care
9A	2322	20	Mercy Medical Center		Healthcare
9A	2322	21	Mount Holyoke College	Housekeeping	Higher Education
9A	2322	22	Goddard College	Staff and Faculty of College	Higher Education
9A	2322	23	University of Massachusetts Amherst	Graduate Teaching and Research Assistants, Residential Assistants, Peer Mentors	Higher Education
9A	2322	24	Young Womens Christian Assn	Counseling, Job Training, Social Services, Domestic Violence Programs	Nonprofit

Region	Local	Unit	Corporation	Product or Service	Category
9A	2322	28	University of Massachusetts Amherst	Postdoctoral Researchers	Higher Education
9A	2322	29	City of Nashua	City Admin & Public Works	Public Sector
9A	2322	30	Concord (N.H.) School District	School District Bus Drivers	Public Sector
9A	2322	31	City of Concord	City Admin.	Public Sector
9A	2322	32	Concord (N.H.) School District	Custodians	Public Sector
9A	2322	33	Concord (N.H.) School District	Cafeteria	Public Sector
9A	2322	36	American National Red Cross	Phlebotomists	Healthcare
9A	2324	6	Boston University	University Admin Staff	Higher Education
9A	2325	1	Assoc Of Legal Aid Attorneys	Legal Aid Attorneys	Legal
9A	2325	2	Federal Defenders Of New York	Defense Attorneys	Legal
9A	2325	4	Orange County Legal Aid	Legal Services	Legal
9A	2325	5	NOLSW	Legal Services	Legal
9A	2337	1	Environmental Quality Board	Environmental Emergency First Responders, Lab Testing	Public Sector
9A	2341	1	Department of Public Works	Road Maintenance, Auto Registrations	Public Sector
9A	2368	1	Department Of Agriculture	Public Agricultural Services	Public Sector
9A	2373	1	Treasury Department	Treasury Department Employees	Public Sector
9A	2377	1	City of Stamford	City Workers	Public Sector
9A	2396	1	Association of School Cafeteria Workers	School Cafeteria Workers	Public Sector
9A	2415	1	Bacardi	Bacardi White, Bacardi 8-year-old, Bacardi Lemon, Bacardi Apple, Bacardi Reserve Limited	Food Manufacturing
9A	2555	2	Department of the Family	Public Assistance, Child Protective Services	Public Sector
9A	3003	1	Department of Treasury	Puerto Rico Lottery	Public Sector
9A	3003	3	Department of Youth Affairs	Public Youth Affairs	Public Sector
9A	3999	1	General Dynamics Corporation	Designers of Ships	Public Sector
9A	4004	1	Admin Serv Desar Agropecuario	Department of Agriculture Administrative Offices	Public Sector
9A	6950	1	University of Connecticut	Teaching and Research Assistants	Higher Education
9A	7770	1	Newport Grand LLC	Gambling Services	Gaming
9A	7902	1	New York University	Adjunct & Part-Time Faculty	Higher Education
9A	7902	2	The New School	Part-Time Faculty	Higher Education
9A	7902	3	The New School	Part-Time Faculty	Higher Education

CONSUMER AVAILABLE PRODUCTS



This section is a sampling of consumer-available goods, where the purchaser has choices of what they will buy. Earlier in this guide we provided a complete listing of the work of our UAW members; which includes UAW-made components or machinery that help to make and transport these consumer-available goods. UAW members also work for various branches of government that ensure these goods are safe or properly licensed. Additionally, UAW members touch our lives in education, from elementary schools to universities.

AGRICULTURAL

Local	Unit	Region	Corporation	Product or Service
74	1	4	John Deere	Round Baler, Large and Small Square Balers, Self Propelled Wind Rowers, Mower-Conditioners and Pull Type Forage Harvesters
180	1	4	CNH	Case IH Magnum Tractors
434	1	4	John Deere	Planters & Cylinders
450	1	4	John Deere	Self-Propelled Sprayers, Cotton Harvesters, Tillage Equipment & Grain Drills
865	1	4	John Deere	Combine Harvesters & various Harvesting Headers
893	10	4	Ritchie Industries	Heated Fresh Watering Tanks for Animals

GAMING/ENTERTAINMENT/ HOSPITALITY

Local	Unit	Region	Corporation	Product or Service
17	1	8	Caesars Entertainment Corp (Horsehoe Casino)	Casino Dealers
155	619	1	Cranks Catering Services	Catering
155	676	1	Mike's Legends Catering	Catering
155	684	1	Eat Catering Company LLC	Catering
245	5	1A	The Henry Ford (Edison Institute)	Museum
647	45	2B	Jack Entertainment LLC	Gaming
889	108	1	Marriott International Inc.	Hotel
1005	4	2B	Jack Entertainment LLC	Casino
1127	1	9	Caesars Entertainment Corp (Bally's of New Jersey)	Dealers
1435	20	2B	Hollywood Casino	Gaming
1588	7	2B	Penn National Gaming Inc.	Gaming
2110	22	9A	Museum Of Modern Art	Museum
2110	55	9A	Bronx Museum Of The Arts	Museum
2121	2	9A	Mashantucket Pequot Tribal Nation (Foxwoods Casino)	Casino
2179	552	9A	American Multi-Cinema, Inc. (AMC)	Movie Theatre Ushers & Concessions
2179	612	9A	Barge Inn	Restaurant

Local	Unit	Region	Corporation	Product or Service
2256	21	1D	Lansing Entertainment & Public Facility Authority	Conference Center
3048	4	2B	Tropicana Entertainment, Inc.	Casino
3170	1	9	Caesars Entertainment Corp (Bally's)	Dealers/Slot Techs
3555	1	5	Caesars Entertainment Corp	Gaming
3555	2	5	Caesars Entertainment Corp	Gaming
3555	3	5	Caesars Entertainment Corp	Gaming
3555	4	5	Caesars Entertainment Corp	Gaming
3555	6	5	Caesars Entertainment Corp	Gaming
3555	7	5	Caesars Entertainment Corp	Gaming
3555	8	5	Caesars Entertainment Corp	Gaming
7770	1	9A	Newport Grand Casino	Gambling Services
7777	1	1	MGM Grand Detroit	Table games, Cage Cashier, Slot Tech, VIP, Banker
7777	2	1	Motor City Casino	Slot Tech, Banners, Cage, Count Room
7777	3	1	Greektown Casino	Slot Tech, Banners, Cage, Count Room
8868	2	8	Boyd Gaming Corporation	Professional Jai-Alai Players
8868	5	8	Florida Gaming Corporation	Professional Jai-Alai Players
8888	1	9	Tropicana Entertainment, Inc.	Dealers/Slot Techs

FOOD MANUFACTURING

Local	Unit	Region	Corporation	Product or Service
9	18	4	Briss Malting Industries	32 pound Extract Growler available for homebrewers
55	233	9	Perry's Ice Cream	Ice Cream
70	103	2B	Land O' Lakes/Kroger brand	Tub and Stick Butter Products
174	385	1A	Country Fresh/Dean Foods	All dairy products, including milk and butter
509	312	5	MillerCoors	Miller/Coors Beer
724	80	1D	Schweppes	Dr. Pepper
1805	1	5	Folgers & Dunkin Donuts	Coffee
2308	1	2B	MillerCoors	Beer
2415	1	9A	Bacardi	Bacardi White, Bacardi 8-year-old, Bacardi Lemon, Bacardi Apple, Bacardi Reserve Limited
2426	5	8	Planters Peanuts (Kraft)	Planter's Peanuts

HOME PRODUCTS/ TOOLS MANUFACTURING

Local	Unit	Region	Corporation	Product or Service
5	158	2B	Johnson Hardware	Door Hardware
5	160	2B	Steinway Musical Instruments	Distribution/Shipment of Musical Instruments
86	6	2B	Fulton Industries Inc.	Flashlights
125	40	4	Whirltronic Inc.	Lawnmower Blades
174	272	1A	Air Conditioning Products Co	Dampers/Wall Shutters
174	286	1A	Hancock Enterprises	Aluminum Gutters & Downspouts
174	310	1A	Masco Corporation - Brasscraft	Packaging, Plumbing Parts, & Supplies
376	8	9A	Colt's Mfg Company (Colt)	Firearms
413	1	1D	Lloyd Flanders	Wicker Furniture
469	1	4	Master Lock	Master Lock Combination Padlocks
739	1	9	Reed Mfg Co	Plumbing Equipment
771	92	1	Hackett Hammers	Hammers
833	1	4	Kohler Co	Bath and Toilet Fixtures, Faucets, various Engines and Generators
856	4	2B	Mequiar's Car Wax and Viabuff Loofah's	Wax Buffing Pads, Loofah Bath Scrubs and Medical Supplies
893	11	4	Lennox International Inc.	Residential Heating and Cooling Units
959	4	2B	Crescent Mfg Co	Knives and Blades
997	4	4	Whirlpool Corporation	Replacement parts for Whirlpool
1002	1	1D	Bradford White	Water Heaters
1073	1	2B	Johns Manville	Insulation
1472	1	4	Vollrath	Metal Pans, Cookware, Restaurant and Kitchen Supplies
1540	1	4	Russell Corporation	Equipment Gymnastic Mats, Balance Beams, Basketball Hoops used in College and Pro Arenas
1588	5	2B	Central Aluminum	Patio Enclosures
1672	1	4	Andersen Corporation	Storm Doors sold at Home Depot
2179	243	9A	Steelcase, Inc.	Office Furniture Manufacturing
2326	101	9	Andersen Corporation	Windows
2359	1	2B	Steinway Musical Instruments	Brass instruments
9699	6	1	Walbro	Fuel Systems and Tanks/Lawn and Garden
9699	14	1	Threaded Products Company	Household Plumbing Fitting

PERSONAL CARE/ COSMETICS

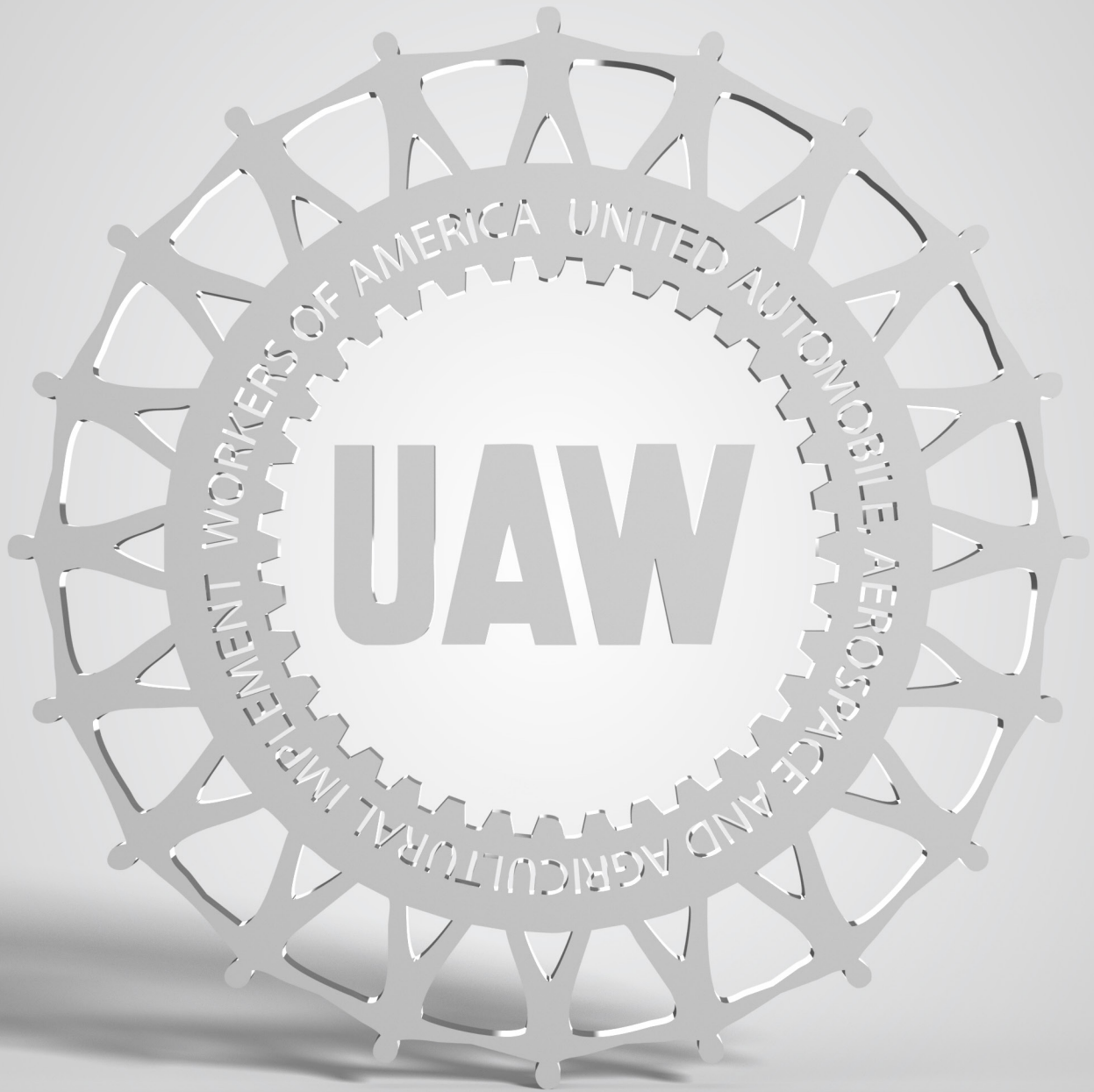
Local	Unit	Region	Corporation	Product or Service
70	139	2B	Dayglo/Fury	Lip Balm, Fluorescent Hairspray, Fluorescent Paints and Pigments
2326	88	9	Cosmetic Essence LLC	Perfume Bottles (Kim Kardashian, Britney Spears, and Jessica Simpson perfume)
6520	1	8	Almay, Revlon, Roux and Ultima	Cosmetics and Toiletries

PRINTING/PROMOTIONAL GOODS/APPAREL

Local	Unit	Region	Corporation	Product or Service
19	70	1D	T-Shirts Plus	Clothing and Embroidery
55	218	9	American Images By Hillstar	Embroidery
155	648	1	Dmr Advertising	Clothing, Banners, Mugs
155	680	1	Just In Time, LLC	Apparel
174	328	1A	Impressions	Shirts, Jackets and Promotional Items
400	20	1	DBA Image America	Embroidery and Screen Printing
600	101	1A	Estwo Promotions, Inc.	Commercial Screen Printing
771	142	1	Unique Expressions	Promotional items
925	10	1D	Custom Embroidery Plus	Embroidery
997	12	4	Vernon Company	Promotional Goods and Decals for Trucks (must request Union Made)
1596	86	9A	Mirror Image Inc.	Custom Silk Screening
2179	114	9A	Franco American Novelty Comp	Costume Manufacturer
2179	132	9A	Direct Mail Master Cont Assn	Printing and Mailers
2179	135	9A	Direct Mail Master Cont Assn	Mailhouse & Custom Banners
2179	153	9A	Fineline Thermographers	Printing Service
2179	593	9A	Stone Enterprises, Inc.	Promotional Products, Advertising Specialties and Bbusiness Gifts
9699	85	1	Amore Digital	Screen Printing

PUBLICATIONS/BOOKS/ BOOKSTORES

Local	Unit	Region	Corporation	Product or Service
1596	65	9A	Brookline Booksmith Corporation	Bookstore
1596	78	9A	Harvard Book Store	Books/Clothing/Accessories
1596	91	9A	Red Sun Press	Cooperative Printer
2103	3	5	Mother Jones Magazine	Mother Jones Magazine Staff
2110	14	9A	Harper Collins Publishers	Writers, Authors
2110	15	9A	The Monthly Review	Magazine
2110	32	9A	The Village Voice	Newspaper
2110	43	9A	Stamford Advocate	Periodicals
2110	54	9A	The New Press	Publishing
2179	561	9A	Strand Book Co	Booksellers



© 2018